

Parish Profile for a

# TEAM VICAR

for the churches of **St Alban the Martyr, Cheam and St Oswald, North Cheam** in the **Cheam Team Ministry**



St Oswald



St Alban the Martyr



St Dunstan



St Dunstan's | St Alban's | St Oswald's  
**CHEAM TEAM MINISTRY**  
*working together for the glory of God*

## Introduction

We have two friendly and supportive congregations at St Alban's and St Oswald's who are looking forward to welcoming a Team Vicar who will help us fulfil the hopes and prayers we have harboured for many years, both for our church families and the wider community. After a challenging period, we are looking for a priest who will enable us to build a new and exciting vision for our churches and bring about change and engaging in mission to the people we serve.

Our new Team Vicar will have incumbent status and be the lead priest for the churches of St Alban the Martyr, Cheam and St Oswald, North Cheam (two of the three churches in the Cheam Team Ministry). The Team Vicar will also join in the wider mission and ministry across the whole parish alongside the Team Rector, who is based at St Dunstan's, Cheam.

## Person Specification

The person we are looking for should be:

- Someone who has an inclusive understanding of church and faith and be comfortable ministering within a predominantly liberal catholic environment;
- An accomplished communicator, who is challenging in their preaching and teaching, making sure that faith is relevant and responsive to the needs of those in the local community;
- An organised and efficient time manager, who is able to prioritise commitments clearly, manage expectations, and is prepared to take difficult decisions;
- Committed to high quality pastoral care;
- Able to work collaboratively with the wider ministry team and people from across the whole parish;
- Experienced in vision-building and Mission Action Planning;
- Able to balance each church's individual character whilst fostering a greater sense of common identity and cooperation across the whole parish;
- Skilled in encouraging and motivating others as they learn and grow in their faith and nurturing of all aspects of vocation.

It would be desirable for the person we are looking for to have:

- A proven track-record of enabling change in either a secular or a parochial context;
- Experience of building relationships with local authority schools and other institutions;
- Interests related to ministry, academic or otherwise, beyond parish life and commitments;
- Experience of social outreach and working with charities and other third sector organisations;
- Experience of working within a team ministry.

## Role Specification

The role of a parish priest can be varied and wide-ranging, but we expect our new Team Vicar to:

- Bring a feeling of stability back to worship, mission, and ministry at St Alban's and St Oswald's and help the churches to grow in confidence once again;
- Be responsible for worship and pastoral care for St Alban's and St Oswald's;
- Share funeral and marriage ministry across the parish;
- Re-establish links with local schools and nurseries, in particular Cheam Park Academy and Cheam Fields Primary, as well as other local organisations;
- Work with the Team Rector and wider parish to develop an agenda for change through a new parish-wide vision and Mission Action Plan (MAP);
- Implement aspects of the MAP relevant to St Alban's and St Oswald's;
- Take the lead on some parish-wide elements of the MAP;
- Help to deepen relationships between the three team churches and work towards greater collaboration.

## The Team Ministry

In the 2000s, the Parish of Cheam was formally reorganised into a Team Ministry. As a Team Ministry, the Parochial Church Council (PCC) is the main decision-making and statutory body and is a registered charity. Each church has a District Church Council (DCC) which meets between PCC meetings.

The Cheam Team Ministry is entering into a time of change. The Reverend Dr Nicholas Peacock was inducted as Team Rector in July 2019. The post of Team Vicar has been in vacancy since early 2019. Our new Rector is seeking to move the whole parish towards a new vision for the place and role of its three churches in the life of the local community. He is looking for a colleague who can play a central role in shaping this vision as the parish looks to move forward.

The Rector has set out six key principles around which discussions about the parish's future should be based. These are that we need to be a parish:

1. which reflects Jesus' radically inclusive love by ensuring that everyone has a place, regardless of their ethnicity, gender, sexuality, disability, health, or wealth;
2. whose primary focus is on mission and outreach and is concerned more with the world beyond our churches, seeking to build meaningful connections with the community we serve;
3. which is outspoken, taking risks and being constructively critical of the world and society in which we find ourselves;
4. which is prepared both to engage and experiment with those new things which might take us forward and also to let go of those things which might be holding us back;
5. which works well together, collaborating in a shared vision for mission across our three churches and recognises that God calls each of us to work out what our own calling is and to act on it;
6. which realises that faith does not stand still and is committed to growing in faith, learning more about God, and working out what it means to be followers of the way of Jesus in our own lives and in our community of Cheam today.



## Our Churches

### St. Oswald's Church



St. Oswald's Church is situated on the Park Farm Estate, to the north of the Parish. The church and its adjoining hall date from 1953 and 1937 respectively (the hall being built first to serve the spiritual and community needs of the developing estate – a role St. Oswald's has continued to the present day). In 2015 a new vicarage, constructed to the highest standards, was built adjacent to the church.

We are a friendly, welcoming and inclusive church. Worship is based around a Sunday morning Family Eucharist, with term-time Sunday School led by a team of leaders and helpers, and all the major festivals are celebrated. There are usually around thirty people who attend this service. We have a

(currently) small but talented choir led by a Music Director, augmented on special occasions by former members, home from University. There is a mid-week Eucharist every Thursday morning, which currently includes healing on a monthly basis. Regarding occasional offices, in 2018 we had five baptisms and one funeral. The last marriage to be held at St Oswald's was in 2013.

A significant proportion of our congregation play a regular role in our worship either as sidespersons, readers, intercessors or eucharistic ministers, and we offer home communion to those who wish to have it. Our church finances are sound, and we have an exemplary record of support for charities.



Most of the regular congregation is of retirement age and over, and while we have been joined by several younger families with children in recent years we are well aware we need to develop our church facilities, services and outreach to better serve their needs and those of the wider community.

Currently the church is open each Wednesday for a much valued coffee morning, which attracts some older members of the wider community as well as from our congregation. On alternate Wednesdays, in association with the local AgeUK, we run a successful and popular singing group for the community ('Sing for Joy') with a loyal attendance of 20 or so. Other social events are

organised during the year including regular Summer and Winter Fairs (with local charities being invited to join in the latter) as well as fund raisers for charities such as the MU 'Away from it all', Tearfund, and Macmillan Cancer Care.

Regarding the church buildings, our Inspecting Architect wrote in 2018 "The basic architectural description of single cell brick construction under a concrete tiled roof without tower or other adornments does not do the building justice. It is well proportioned, carefully detailed and makes the best use of modest



embellishment to achieve a pleasing and fitting place of worship”. New priest’s/choir vestries, kitchen and disabled toilet were added in 2014. The church fabric, fittings and fixtures are conscientiously maintained in a good state of decoration and repair (a fact usually commended during the Archdeacon’s Annual Inspection). It benefits from new modern lighting, new heaters and plans are in hand to purchase new comfortable seating, which will be easily moveable to provide a large flexible space when needed.



Our large adjoining hall (complete with stage) has recently been fully refurbished and redecorated, with a new wooden floor laid in 2018. The kitchen was provided with new cupboards and equipment in 2014. Like the church, great attention is given to maintaining a high level of repair and maintenance. We have a designated Hall Secretary and employ a cleaner on a daily basis. The hall is well used by the local community and is nearly always fully booked. An excellent Preschool, which has close links with the church, meets each weekday morning (all day Thursdays and Fridays), and a diverse range of other groups meet on a weekly basis (including several dancing groups, keep fit, karate, Townswomen’s Guild). We also have private bookings at weekends for children’s parties. Hall bookings make a significant contribution to our church/hall income, but more importantly provide tremendous potential, largely untapped, to develop positive links with the local community.

### **St Alban’s Church**

At St Alban’s we serve the east of the parish, close to Sutton United Football Club, Collingwood Recreation Ground, and Sutton and Cheam Cricket and Squash Club and Fitness Centre.

The church was built between 1930 and 1933 from parts of the walls and all of the roofs of a barn and cow shed on old Cheam Court Farm in Cheam Village that dated back around five hundred years. This gives the Gander Green Lane part of the parish a comparatively new building which feels old and certainly has the character of a large barn. We call ourselves the ‘friendly barn church’.

The church has a modern organ and a new lighting system has been installed this year. There is a modern fitted kitchen and a meeting room for Sunday School. We are currently in the process of updating our facilities to include a disabled toilet. There is a separate church hall 300 yards along Gander Green Lane that has one large hall and stage, a smaller hall and central kitchen, toilets and an enclosed child friendly garden. It is in very good order and is well used by a preschool and a dance school. The hall has a bookings secretary / caretaker, is financially independent and in recent years has been able to make a substantial contribution to the church. The DCC is committed to maintaining it as a community asset.





We have an average Sunday congregation of about 40 worshippers. Worship is centred on the Eucharist. Common Worship (Order 1) is used on Sundays and weekdays and currently the Sunday services begin at 10.45am. Our Director of Music organises a small choir, which helps to lead our worship. The Family Eucharist is followed by refreshments in the church. During the vacancy it has become necessary to replace one Sunday Eucharist service with a Service of the Word. On the first Sunday of the month at 6.00pm we hold the Parish Choral Evensong.

Our weekday services are held on Wednesdays at 10.00am. The first Wednesday of the month is a Eucharist Healing Mass and the second Wednesday is a 'Table Mass' that recreates the Last Supper. Introduced by one of our parish priests with PTO, this service is regular attended by around twenty communicants from across the parish. All Wednesday services are followed by refreshments. This year our church held 3 baptisms, 2 weddings and 1 funeral.

The Advent Carol Service is a parish wide event that take place in St Alban's on the first Sunday of Advent. The church is lit by dozens of candles and the three choirs perform the advent carols with lessons read by lay people. Refreshments are served afterwards. For our Christmas services we hold both Midnight Mass and Christmas Day Eucharist. On Christmas Eve our Sunday School arrange a Crib Service for children

During Lent we have weekly Stations of the Cross services. These are lay-led but we are always happy to welcome our priest to lead us in the worship. Holy Week begins with Palm Sunday and a choir led procession around the perimeter of the church. For Easter Sunday the church is filled with Easter Lilies, sponsored by the congregation and the service is concluded with an Easter Egg hunt for the children and an Easter Bonnet Parade for everyone.



Mothering Sunday, St Alban's Day, All Souls', Harvest and Remembrance are all recognised every year.

We have an active Sunday School and a very good team of Sunday School teachers. On Good Friday they hold a Good Friday Workshop for local children and have summer and Christmas outings. They also held two Messy Churches in the year. Both of which were well attended.

We raise money for the Children's Society and Leprosy Mission through collection boxes distributed to approximately twenty members of the congregation. In 2019 the Sunday School raised money for Young Minds, a charity fighting for children and young people's mental health. We also recognise Christian Aid, the charity identified by the Parish for Harvest gifts, the Bishop's Lent Appeal and also give to our local hospice.

We hold regular community events. Foremost among these are our fortnightly drop-in sessions on alternate Friday mornings. The drop-ins attract between 30 and 50 people each time. Although approximately half do not regularly attend Sunday services, they have been responsible for introducing a number of people to worship over the fifteen years they have run. They are an important focal point for people to get together informally to enjoy good company as well as a selection of refreshments. They are also used to celebrate





events such as special birthdays and anniversaries and there is usually a very short talk to the group. Occasionally speakers are invited to give short talks on a variety of topics.

Our active Fellowship programme includes lunches for St Alban's Day and Christmas as well as a breakfast at Epiphany and coffee mornings every Saturday of the school summer holidays. We also have a bring and share lunch after the Harvest Festival service and mark Shrove Tuesday with a pancake evening. Our fundraising includes annual quiz nights, a Spring Fair and an Autumn Fair as well as various smaller activities during the year.



Over the past six years St Albans' regular Sunday congregation has fallen noticeably and as a consequence, like many churches, we have difficulty in finding volunteers to take on roles within the church. This has resulted in a few people doing many tasks and some roles not being filled at all. We recognise that changes need to be made and are keen to welcome a Team Vicar who will help us to embrace whatever the future brings.

### **St Dunstan's Church**

St Dunstan's Church is by tradition the focal point for civic worship in Cheam. This includes the annual Service of Remembrance and the opening of the annual Charter Fair in May. The present church was built in 1864 but the old church dated back to Saxon times, the chancel of which is still standing in the church yard. Now the Lumley chapel, it is vested in the Churches Conservation Trust but remains consecrated and one or two services are still held there. We have a small modern church hall for use by the church and local community.



The main Sunday Service (Common Worship Order 1) is at 9.30am. This is a family-friendly choral service with a regular attendance of around 100. The Sunday School, which is concurrent with the service during term time, is attended by between 6 to 16 children aged from 4-10 years. We have an 8am BCP Eucharist which accommodates those parishioners who prefer a quieter more contemplative service. Sunday evening services currently include Evensong and a monthly 'Reflect' quiet service. The main weekday services are silent prayer on a Monday evening and BCP Eucharist on Wednesday morning. We observe Holy Week in full and at Christmas there are a variety of services for the whole community of Cheam.

In 2018, we had 5 marriages, 23 baptisms, and 12 funerals. The Parish Support Group supports the families of the recently deceased across the Parish. Those who are bereaved are also encouraged to attend the annual All Souls' Eucharist.

We are a busy church and there are a number of groups which meet on a regular basis, some as part of our outreach programme. The Friendly Club meets on a Monday for gentle exercise, a quiz, a cup of tea and 'good company'. The Parish undertook to support this group when the London Borough of Sutton withdrew funding. The monthly Loaves and Fishes





Lunch Group welcomes both members of the congregation and the wider community. The lunch is usually followed by a talk or a quiz. The bi-monthly Friday Drop-In has a core membership of about 20 who meet for a drink, a chat and excellent home-made cake. Knitting Club meets once a month. The 15 to 20 regulars, not all members of the congregation, meet to knit and chat. The group supports local charities, including hats and scarves for Sutton Night Watch, the local neonatal unit, and charities supporting the dispossessed in Syria.



An important part of parish life is our local branch of Mothers' Union, which celebrated its centenary in 2018. More than 50 members come together for a variety of social and spiritual meetings. The MU supports the local women's refuge and other deanery projects, raising over £1000 each year for the work of MU in the diocese. Cards are sent to babies baptised and couples married in the Parish.

The MU organises gifts of daffodils and simnel cake on Mothering Sunday.

## Ministry Team and Support

The Parish has two full-time stipendiary clergy (Team Rector and Team Vicar) and one self-supporting Assistant Priest. We also have the services of two clergy with PTO as well as a Reader and Southwark Pastoral Assistant (SPA).

The Parish Office is based at St Dunstan's and is a shared resource for the whole parish. Our Parish Administrator works four mornings per week.

## Terms of the Appointment

The appointment of Team Vicar for the Cheam Team Ministry is made under the Ecclesiastical Offices (Terms of Service) Regulations 2009, under which the post will be held under Common Tenure. The stipend will be paid on the Diocesan scale for incumbents.

The parish has a concern for the health, well-being, and personal and professional development of its priest, with the understanding that:

- All legitimate expenses are paid in full;
- All holidays and days off are taken;
- An additional day off is taken each month alongside the normal day off to provide a period of 48 hours;
- Time for training (CME), personal development, retreat, and academic study is also supported.

## The Area



Cheam is on the south-western edge of Greater London, adjoining Surrey and part of the London Borough of Sutton. A settlement since Anglo Saxon times, Cheam is recorded in the Domesday Book. Henry VIII built his extravagant Nonsuch Palace in what is now Nonsuch Park. A rural village until the arrival of the railways and the motor car, the character of the area changed dramatically in the 20<sup>th</sup> century. Cheam Village has retained its village feel, but is now surrounded by substantial suburban housing development which stretches into North Cheam and has its own distinct retail area. The churches of St Alban and St Oswald were built to serve the growing population.

## Schools

There are a number of schools within the parish: St Dunstan's, Cheam, Church of England Primary; Cheam Park Farm Primary Academy (very near St Oswald's); Cheam Fields Primary; and Cheam High, a large mixed secondary school. There are several nurseries and pre-schools throughout the parish.

The parish has an excellent relationship with St Dunstan's Primary School. The school is a larger than average, voluntary aided Church of England primary school with a maximum of 488 children on roll. The most recent OFSTED Inspection (July 2017) judged the school to be 'good' and the Statutory Inspection of Anglican and Methodist Schools (SIAMS) in January 2018 validated the school as 'outstanding'.



The Team Rector is an ex-officio member of the Board of Governors and works in close partnership with the Headteacher. The school also has very effective and mutually supportive links and relationships with the Southwark Diocesan Board of Education and the London Borough of Sutton. The leadership and management of the school provide an exceptionally clear vision to create and maintain an outstanding church school, giving a very decisive Christian direction to the school which is held in high regard by the community. Christian values and the mission statement underpin all policies.

## Healthcare



There are no NHS hospitals in the parish, but both St Helier and Epsom hospitals are easily accessible. St Anthony's private hospital is just outside the parish at North Cheam, along with St Raphael's Hospice. The clergy have historically taken an active role in the Chaplaincy Service at the hospice, taking a weekly Eucharist in the Chapel. Although we are currently unable to resource this, it is something we might consider again in the future. There are several GP surgeries and care homes within or close to the parish boundary.

## Shopping, Eating, and Entertainment



There two large supermarkets (Tesco and Sainsbury's) within easy access and several convenience stores, including a Little Waitrose in Cheam Village. There are Post Office branches in Cheam and North Cheam. The larger shopping areas of Croydon, Kingston, Wimbledon, and Sutton are easily accessible by car or public transport.



Cheam Village is noted for its restaurants with over twenty within a short walk of the village crossroads. There are also a number of restaurants in North Cheam. The nearest cinema is in Sutton, there are theatres in Kingston, Wimbledon, and Epsom, and the recently re-opened Fairfield Halls in Croydon is a well-known music venue.

## Transport





Cheam station, served by Southern Rail, has direct connections to Victoria and London Bridge. West Sutton is on Thameslink's Sutton to Wimbledon loop. The Thameslink service to St Pancras and Luton via the City can be accessed by changing at Sutton. Worcester Park station, a short bus journey from North Cheam, is served by Southwest Rail trains into Waterloo. There is a good network of buses with destinations including Heathrow, Kingston, Putney, and Wimbledon.



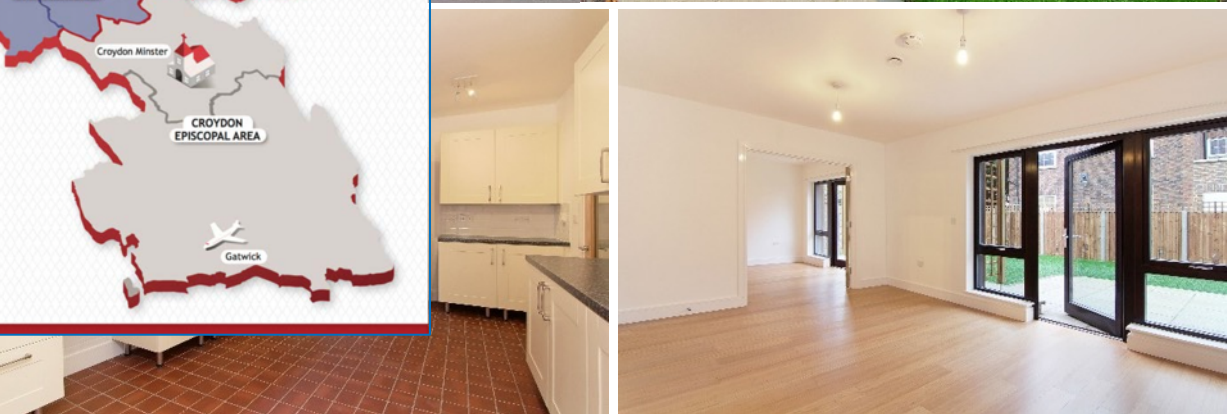
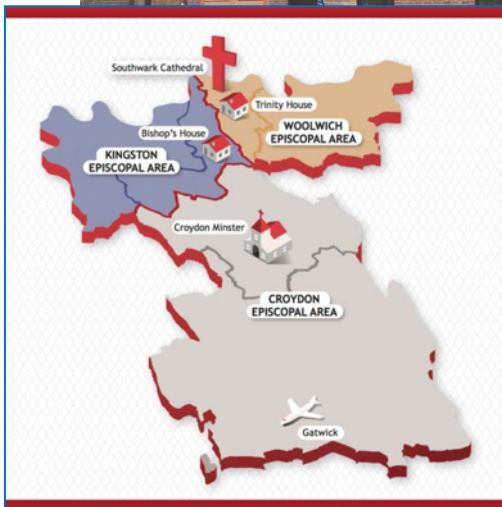
## Demographics



Cheam Parish has a population of approximately 26,000. Sutton has a higher majority white population (78.6%) than most London boroughs. It has a low index of multiple deprivation with 17 Lower Super Output Areas, none of which are in the parish. The number of people claiming benefits is lower than the national average. Further information can be found in the parish's 'Spotlight' data: [extranet.southwark.anglican.org/public/spotlights](http://extranet.southwark.anglican.org/public/spotlights).

## The Vicarage

A new Vicarage at 25A Molesey Drive, North Cheam (next to St Oswald's) was completed in late 2015. It has four bedrooms, a large sitting room, dining room, kitchen and utility room. The study is at the front of the house, separate from the main living areas.



## The Diocese of Southwark



The Cheam Team Ministry is part of the Deanery of Sutton, which is in the Reigate Archdeaconry and Croydon Episcopal Area of the Diocese of Southwark.

The Diocese of Southwark, founded in 1905, covers South London and East Surrey. It serves the 2.8 million people in the 16 local authorities of South London and East Surrey through 356 places of worship, 293 parishes, and 106 church schools. The Diocese is divided into three Episcopal Areas – Croydon, Kingston, and Woolwich – each with an Area Bishop, two Archdeacons, and a team of clergy and laity who carry out various roles relating to vocations, minority ethnic concerns, women’s ministry, and readers. Southwark Cathedral is on the River Thames near London Bridge and Shakespeare’s Globe Theatre.

The Deanery of Sutton, which is on the border of Greater London and Surrey, has twelve benefices, fourteen parishes, and twenty churches. It includes three Local Ecumenical Partnerships. The Deanery is generally suburban with two parishes primarily made up of large council estates.

**Financial Statements  
of the  
Parochial Church Council  
for the year ending 31<sup>st</sup> December 2018**

(audited and presented to the APCM in 2019)

**St Dunstan's, Cheam**  
**Statement of Financial Activities**  
**For the period from 01 January 2018 to 31 December 2018**

	Unrestricted funds	Restricted funds	Endowment funds	2018 Total funds	2017 Total funds
<b><i>Incoming resources</i></b>					
Incoming resources from donors	80,457.05	-	-	80,457.05	92,059.87
Other voluntary incoming resources	6,714.72	22,831.97	-	29,546.69	11,995.98
Activities in furtherance of the councils objects	2,688.00	-	-	2,688.00	6,969.75
Activities for generating funds	11,072.83	-	-	11,072.83	13,372.99
Income from investments	20,642.90	-	-	20,642.90	20,166.85
Other incoming resources	1,640.00	-	-	1,640.00	-
<b>Total incoming resources</b>	<b>123,215.50</b>	<b>22,831.97</b>	<b>-</b>	<b>146,047.47</b>	<b>144,565.44</b>
<b><i>Resources used</i></b>					
Costs of generating funds	128.90	-	-	128.90	384.49
Costs of generating voluntary income	2,288.00	-	-	2,288.00	2,302.99
Grants	892.07	-	-	892.07	758.20
Activities relating to the work of the Church	125,482.84	-	-	125,482.84	112,637.24
Support costs	8,821.20	-	-	8,821.20	7,909.85
Church management and administration	2,782.22	-	-	2,782.22	4,346.04
<b>Total resources used</b>	<b>140,395.23</b>	<b>-</b>	<b>-</b>	<b>140,395.23</b>	<b>128,338.81</b>
<b>Net incoming / outgoing resources before transfer</b>	<b>- 17,179.73</b>	<b>22,831.97</b>	<b>-</b>	<b>5,652.24</b>	<b>16,226.63</b>
<b><i>Transfers</i></b>					
Gross transfers between funds - in	-	41,540.92	-	41,540.92	-
Gross transfers between funds - out	180.00	41,360.92	-	41,540.92	-
<b>Net movement in funds</b>	<b>- 17,359.73</b>	<b>23,011.97</b>	<b>-</b>	<b>5,652.24</b>	<b>16,226.63</b>
<b><i>Reconciliation of funds</i></b>					
<b>Total funds brought forward</b>	<b>78,210.72</b>	<b>56,520.59</b>	<b>-</b>	<b>134,731.31</b>	<b>118,504.68</b>
<b>Total funds carried forward</b>	<b>60,850.99</b>	<b>79,532.56</b>	<b>-</b>	<b>140,383.55</b>	<b>134,731.31</b>

**Represented by**

Unrestricted

General fund	59,459.14	-	-	59,459.14	77,118.05
--------------	-----------	---	---	-----------	-----------

Designated

Boiler Fund	696.06	-	-	696.06	696.06
-------------	--------	---	---	--------	--------

Children, Young People & Families	64.75	-	-	64.75	237.07
-----------------------------------	-------	---	---	-------	--------

Churchyard Maintenance	631.04	-	-	631.04	159.54
------------------------	--------	---	---	--------	--------

Restricted

Agency collection	-	445.73	-	445.73	445.73
-------------------	---	--------	---	--------	--------

Children, Young People & Families	-	22,831.97	-	22,831.97	-
-----------------------------------	---	-----------	---	-----------	---

Churchyard Rooms - Rebuilding	-	-	-	-	41,360.92
-------------------------------	---	---	---	---	-----------

Improvement Fund	-	41,680.92	-	41,680.92	140.00
------------------	---	-----------	---	-----------	--------

Sound System	-	165.40	-	165.40	165.40
--------------	---	--------	---	--------	--------

Roof Fund	-	15,300.00	-	15,300.00	15,300.00
-----------	---	-----------	---	-----------	-----------

	60,850.99	79,532.56	-	140,383.55	134,731.31
--	-----------	-----------	---	------------	------------



**Statement of Financial Activities**  
**For the period from 01 January 2018 to 31 December 2018**  
**St Oswalds, Cheam**

	Unrestricted St Oswalds	Restricted St Oswalds	2018 Total funds	2017 total funds
<b><i>Incoming resources</i></b>				
Incoming resources from donors	21,908.84		21,908.84	31,504.70
Other voluntary incoming resources	5,311.70		5,311.70	1,142.26
Activities in furtherance of the councils objects	24,746.85		24,746.85	21,192.35
Activities for generating funds	2,580.62		2,580.62	2,770.34
Income from investments	65.26		65.26	6.00
Other incoming resources	-		0.00	-
<b>Total incoming resources</b>	<b>54,613.27</b>		<b>54,613.27</b>	<b>56,615.65</b>
<b><i>Resources used</i></b>				
Costs of generating funds	-		0.00	-
Costs of generating voluntary income	-		0.00	-
Grants	408.50		408.50	152.00
Activities relating to the work of the Church	61,258.62	-	61,258.62	38,054.86
Support costs	-	-	-	-
Church management and administration	261.00	-	261.00	144.00
<b>Total resources used</b>	<b>61,928.12</b>	<b>0.00</b>	<b>61,928.12</b>	<b>38,350.86</b>
<b>Net incoming / outgoing resources before transfer</b>	<b>-7,314.85</b>		<b>-7,314.85</b>	<b>18,264.79</b>
<b><i>Transfers</i></b>				
Gross transfers between funds - in		-	-	-
Gross transfers between funds - out	-		-	-
<b>Net movement in funds</b>	<b>-12,314.85</b>	<b>5,000.00</b>	<b>-7,314.85</b>	<b>18,264.79</b>
<b><i>Reconciliation of funds</i></b>				
<b>Total funds brought forward</b>	<b>60,666.53</b>	<b>13,649.44</b>	<b>74,315.97</b>	<b>56,051.00</b>
<b>Total funds carried forward</b>	<b>53,351.68</b>	<b>13,649.44</b>	<b>67,001.12</b>	<b>74,315.79</b>
<b><i>Represented by</i></b>				
<b>Unrestricted</b>				
General Fund	53,351.68		53,351.68	60,666.53
Legacies				
<b>Designated</b>				
Children, Young People & Families			-	-
Childrens Church			-	-
Church Fabric			-	-
<b>Restricted</b>				
Agency Collection			-	-
Churchyard Rooms - Rebuilding			-	-
Computer Fund			-	-
Development Fund		1,281.00	1,281.00	1,281.00
Organ & Music Fund		1,372.44	1,372.44	1,372.44
Minor Fund		631.00	631.00	631.00
Legacies		10,365.00	15,365.00	10,365.00
Bell Fund		-	-	-
Noticeboard Fund		-	-	-
	53,351.68	13,649.44	67,001.12	74,315.79

**Statement of Financial Activities**  
**For the period from 01 January 2018 to 31 December 2018**  
**St Alban's, Cheam**

	Unrestricted	Restricted	2018 Total funds	2017 Total funds
<b>Incoming resources</b>				
Incoming resources from donors	21,569.13		21,569.13	11,303.00
Other voluntary incoming resources	1,983.75		1,983.75	11,142.00
Activities in furtherance of the councils objects	31,714.74		31,714.74	42,505.31
Activities for generating funds	5,298.49		5,298.49	4,818.00
Income from investments			-	-
Other incoming resources			-	-
<b>Total incoming resources</b>	<b>60,386.11</b>	<b>-</b>	<b>60,386.11</b>	<b>69,768.31</b>
<b>Resources used</b>				
Costs of generating funds			-	-
Costs of generating voluntary income			-	-
Grants	982.65		982.65	1,109.00
Activities relating to the work of the Church	42,846.11		42,846.11	32,773.27
Support costs			-	-
Church management and administration			-	-
<b>Total resources used</b>	<b>43,828.76</b>	<b>-</b>	<b>43,828.76</b>	<b>33,882.27</b>
<b>Net incoming / outgoing resources before transfer</b>	<b>16,737.35</b>	<b>-</b>	<b>16,737.35</b>	<b>35,886.04</b>
<b>Other recognised gains / losses</b>				
<b>Net movement in funds</b>	<b>16,557.35</b>	<b>0.00</b>	<b>16,557.35</b>	<b>35,886.04</b>
<b>Reconciliation of funds</b>				
<b>Total funds brought forward</b>	<b>166,299.86</b>	<b>160,000.00</b>	<b>326,299.86</b>	<b>290,413.82</b>
<b>Total funds carried forward</b>	<b>182,857.21</b>	<b>160,000.00</b>	<b>342,857.21</b>	<b>326,299.86</b>
<b>Represented by</b>				
Unrestricted				
General Fund	147,033.21		147,033.21	131,475.86
Legacies	35,824.00		35,824.00	34,824.00
Designated				
Children, Young People & Families			-	-
Childrens Church			-	-
Church Fabric			-	-
Restricted				
Agency Collection			-	-
Minor Fund			-	-
St Albans Hall		160,000.00	160,000.00	160,000.00
	182,857.21	160,000.00	342,857.21	326,299.86

**Cheam Parochial Church Council**  
**Statement of Financial Activities**  
**For the period from 01 January 2018 to 31 December 2018**

	Unrestricted funds Total	Restricted funds Total	2018 Total funds	2017 total funds
<b>Incoming resources</b>				
Incoming resources from donors	123,935.02	-	123,935.02	134,867.57
Other voluntary incoming resources	14,010.17	22,831.97	36,842.14	24,280.24
Activities in furtherance of the councils objects	58,969.59	-	58,969.59	70,667.41
Activities for generating funds	18,951.94	-	18,951.94	20,961.33
Income from investments	20,708.16	-	20,708.16	20,172.85
Other incoming resources	1,640.00	-	1,640.00	0.00
<b>Total incoming resources</b>	<b>238,214.88</b>	<b>27,831.97</b>	<b>261,046.85</b>	<b>270,949.40</b>
<b>Resources used</b>				
Costs of generating funds	128.90	-	128.90	384.49
Costs of generating voluntary income	2,288.00	-	2,288.00	2,302.99
Grants	2,283.22	-	2,283.22	2,019.20
Activities relating to the work of the Church	229,587.57	-	229,587.57	183,465.37
Support costs	8,821.20	-	8,821.20	7,909.85
Church management and administration	3,043.22	-	3,043.22	4,490.04
<b>Total resources used</b>	<b>246,152.11</b>	<b>0.00</b>	<b>246,152.11</b>	<b>200,571.94</b>
<b>Net incoming / outgoing resources before transfer</b>	<b>-7,937.23</b>	<b>2,831.97</b>	<b>14,894.874</b>	<b>70,377.46</b>
<b>Transfers</b>				
Gross transfers between funds - in	-	41,540.92	41,540.92	-
Gross transfers between funds - out	- 180.00	- 41,360.92	- 41,540.92	-
<b>Net movement in funds</b>	<b>-8,117.23</b>	<b>23,011.97</b>	<b>14,894.74</b>	<b>70,377.46</b>
<b>Reconciliation of funds</b>				
<b>Total funds brought forward</b>	<b>305,177.11</b>	<b>230,170.03</b>	<b>535,347.14</b>	<b>464,969.50</b>
<b>Total funds carried forward</b>	<b>297,059.913</b>	<b>258,182.00</b>	<b>550,241.91</b>	<b>535,346.96</b>
<b>Represented by</b>				
Unrestricted				
General Fund	259,844.03		259,844.03	269,260.44
Legacies	35,824.00		35,824.00	34,824.00
Designated				
Children, Young People & Families	64.75		64.75	237.07
Boiler Fund	696.06		696.06	696.06
St Dunstan's Churchyard Maintenance	631.07		631.07	159.54
Restricted				
Agency Collection	-	-445.73	-	- 445.73
Children, Young People & Families	-	22,831.97	-	-
Churchyard Rooms - Rebuilding	-	0.00	-	41,360.92
Improvement Fund	-	41,680.92	-	140.00
Development Fund	-	1,281.00	-	1,281.00
Roof Fund	-	15,300.00	-	15,300.00
Organ & Music Fund	-	1,372.44	-	1,372.44
Minor Fund	-	631.00	-	631.00
Legacies	-	10,365.00	-	10,365.00
St Albans Hall	-	160,000.00	-	160,000.00
St Dunstan's Sound System	-	165.40	-	165.40
	297,059.91	253,182.00	550,241.91	535,347.14