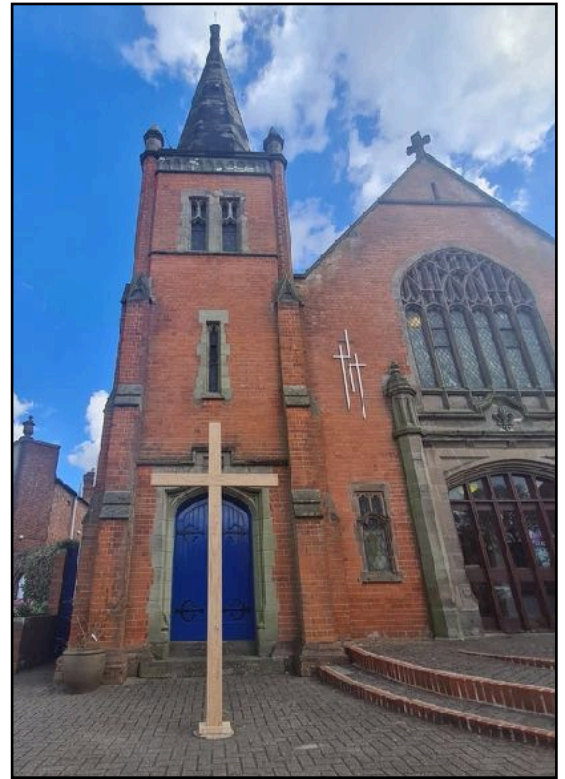


# Profile of The Cotteridge Church

## Summary

The Cotteridge Church is a Local Ecumenical Partnership of The Methodist Church, The Church of England and the United Reformed Church. Located in south-west Birmingham between Bournville and Kings Norton. At the junction of the A4040 and A441 it's 'High Street' location places it at the heart of the community it serves. The building includes a church run café which is open daily Monday - Saturday, a small charity shop for church funds, a second hand book shop, and a separate new book centre and fair trade shop. The building, containing a good range of rooms available for hire, is used by a variety of church groups and outside (room user/hire) groups. The church describes itself as an inclusive, fair-trade and eco-church. In the latter case it has achieved both Arocha Bronze and Silver Awards.



## Background

The building now known as The Cotteridge Church was built as Kings Norton Wesleyan Church and was within sight of St Agnes' Cotteridge (Church of England) and Kings Norton Congregational Church, all three built at the start of the twentieth century. In 1982 the, by now, Kings Norton Methodist Church, St Agnes' (C of E) Cotteridge, and Kings Norton URC, resolved to form an ecumenical partnership. In 1985 the congregations merged and moved into one building, the former Methodist Church.

## Ministry

In the thirty years following merger The Cotteridge Church was served by ministers of each denomination who also had responsibilities elsewhere in their Circuit, Diocese or Pastorate. Around 2015, in consultation with the three denominations, The Cotteridge Church decided to appoint a designated minister from any one of the three denominations to serve as 'Minister of The Cotteridge Church'. The current minister is, by ordination, a presbyter of the C of E but has worked in LEPs for the last twenty years. He is retiring with effect from 31st October 2024.

There is also a retired, but active, presbyter of the C of E who has been involved at Cotteridge since the LEP was formed, and prior to that at St Agnes' Church. The church has also been served by a supernumerary Methodist presbyter and seeks to involve other ministers, lay and ordained in its worship and ministry to ensure a breadth of traditions are represented.

Ministry at The Cotteridge Church is supported by a paid Administrator who works on site five days a week.

## Worship

The Cotteridge Church holds its main act of worship at 10.30am on Sunday as follows.

First Sunday: Parade/All Age Worship  
Second Sunday: Holy Communion  
Third Sunday: Morning Worship  
Fourth Sunday: Holy Communion  
Fifth Sunday: Morning Worship

Attendances vary from 30 - 70 people occasionally more.

On the first Sunday of the month The Cotteridge Church has restarted a Sunday evening service, pre-Covid it was weekly. Currently the monthly service alternates between Holy Communion and Evening Worship. Attendances are around half a dozen.

There is also a service of Holy Communion on Tuesdays at 10.00am with around half a dozen regulars, and a weekly act of worship via Zoom on Wednesdays at 7.30pm with around ten or a dozen regular participants. The current Minister has also produced a weekly reflection on YouTube with around forty viewers.

We have an audio-visual system in the main worship area and we are looking at updating or renewing it.



## Vision and Strategy

A working group has been developing a Strategic Plan for 2024 - 2027 and this was presented to the Annual Church Meeting in May 2024. It has five elements:

### The Cotteridge Church Mission Statement

*“The calling of The Cotteridge Church is to respond to the Gospel of God’s love in Christ and to live out its discipleship in worship and mission”.*

### The Cotteridge Church Vision Statement

The Cotteridge Church builds a welcoming, vibrant and inclusive community for Christian worship, fellowship and service. Immersed in our local community, we are responsive to wider world challenges.

### The Cotteridge Church Values:

**Inclusive** - We nurture and build an inclusive community and inclusive theology

**Ecumenical** - We are an ecumenical space that respects individual church traditions and celebrates what unites us

**Active** - We take action to bring about God's Kingdom

**Sustainable** - We act in ways that reflect an ethical and sustainable approach to people, planet and finance

**Community-focused** - We see community as central to achieving our vision and supporting each other

**Collectively pastoral** – We look out for each other and provide support through organised and informal means.

### High Level Objectives

Objectives have been identified across: Worship, Caring and Learning, Service, Social Justice, Evangelism, and Ecumenism. The final objective is for all delivery to be ethical, financially sustainable and in accordance with our Eco-Church status.

### Action Plan

A short, medium and long term action plan details delivery of the objectives.

## **Membership**

The Cotteridge Church currently has a Membership of 71, with a further 37 on the Community List. This gives a Pastoral List of 108, each of whom are allocated to a Pastoral Link who maintains contact with individuals face-to-face at the church building or by phone or email.

## **Governance**

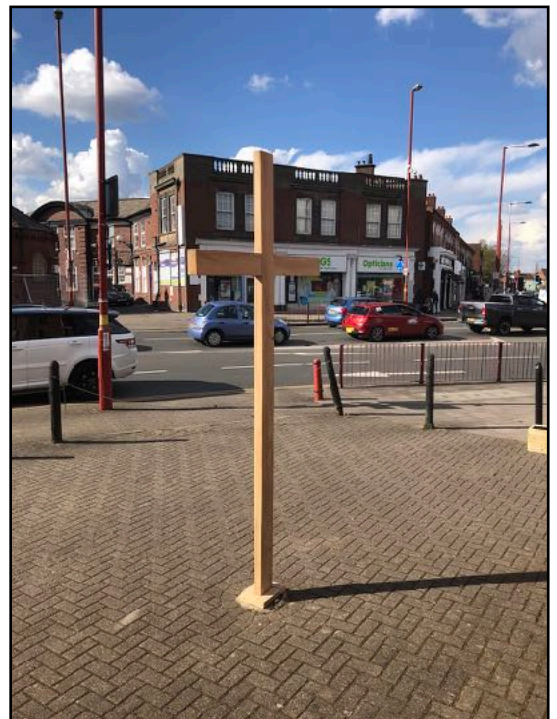
The Joint Church Council is the governing body, and Board of Trustees for The Cotteridge Church. It is set up in accordance with Churches together in England's 'Model Constitution for a Single-Congregation LEP'. It meets usually six times per annum. It delegates duties through a series of committees, on which there will always be Joint Church Council representation. Some matters are further devolved to Working Groups.

## **Safeguarding**

Safeguarding is carried out following the procedures, resources and training provided by Church of England - Birmingham. Training is generally available face-to-face or online in various forms and at various times of day to fit individuals availability.

## **Travelling to The Cotteridge Church**

The Cotteridge Church is situated at a busy location at the heart of its community. However Cotteridge generally including the church has very limited parking. Accordingly the church promotes itself as being at the heart of a public transport hub. Kings Norton Station on the Cross City Line (Lichfield - Birmingham New Street - Redditch/Bromsgrove) is 100 metres away. The station has a large car park for commuters which is usually fairly full on week days (but useful at weekends!). Local bus services are excellent and the Number 11 Outer Circle (said to be



the longest urban bus route in Europe) passes the door. There are also regular services to and from the City Centre via the Pershore Road.

## The Cotteridge Church Café

The Cotteridge Church Cafe operates in The Pennine Way, the main thoroughway of the church building. It currently operates Monday - Friday 8.30am - 1.30pm, and Saturday 10.00am - 12 noon. There are two paid kitchen staff providing cooked and cold meals on weekdays. On Saturdays the café operates as a coffee bar and no meals are served. The 'in house' catering team also provide filled cobs to a local micro-pub. Catering is available for funerals and special events. At Christmas the café, and other spaces, host a number of organisations and groups for Christmas lunches. In 2023 this included the Birmingham Methodist Circuit staff Christmas Lunch.



The importance of The Cotteridge Church Café as a place of ministry and service cannot be overestimated. For some users it is their only social engagement and pastoral encounters in the café are an important part of its ministry.

## Facilities

Our building has level access from outside and to all rooms on the Ground Floor. There are also rooms on the First Floor and Basement, accessed only by stairway. Most rooms are named after ranges of hills and are available for hire. Rooms are (with capacity):

### Ground Floor:

#### **Pennine Way** (c.30)

Main thoroughway servicing other areas. Café and Coffee Bar, Fair Trade/Book/Greeting Card etc Shop.

#### **Malvern** (160 plus balcony)

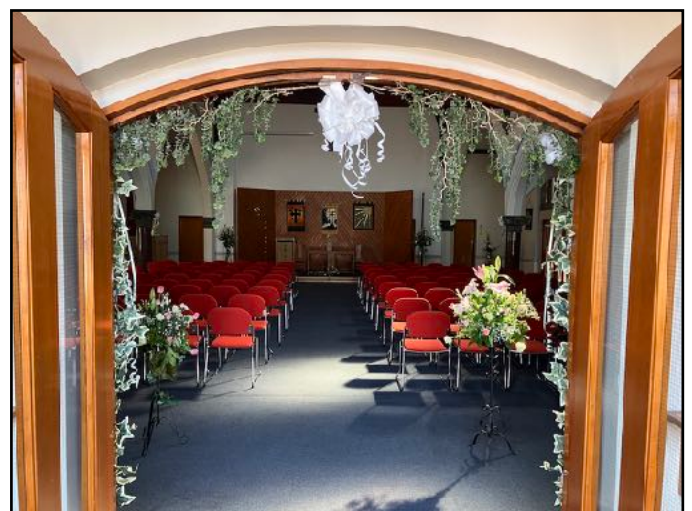
Main worship space, multi-use, removable seating, AV system, organ and piano.

#### **Clent** (60)

Multi-Use space, the original Church Hall. Serving hatch to main kitchen.

#### **Cotswold** (35)

Multi use room with access (via steps) to Church Garden (see below)



*The Malvern Room set up for a wedding*

**Clee** (20)

Meeting room with flexible seating. TV screens. Small kitchen and toilets off.

**Lickey** (10)

Small room, adjacent to café, currently used as a shop selling second hand goods

**Chapel** (15)

Small Chapel with communion table, stained glass, piano. Used for small services.

*Also on Ground Floor:*

**Main kitchen:** with full catering capability, two paid staff.

**Beacon Room:** Donated Book Sales

**Print Room:** with Printer/copier and paper storage.

**Office:** Office space used by Church Administrator. Paid administrator.

**Toilets:** Separate male, female, and accessible toilet facilities.

**Sluice Room:** used as a laundry area.

First Floor

**Chiltern** (25)

Meeting room with modern seating and conference style table.

**Cheviot** (20)

Meeting room

**Offices** (4 each)

Small offices, one currently used by Minister

**Kitchen**

Small kitchen area.

**Toilets** (separate male and female facilities)



*Chiltern Room.*

Basement

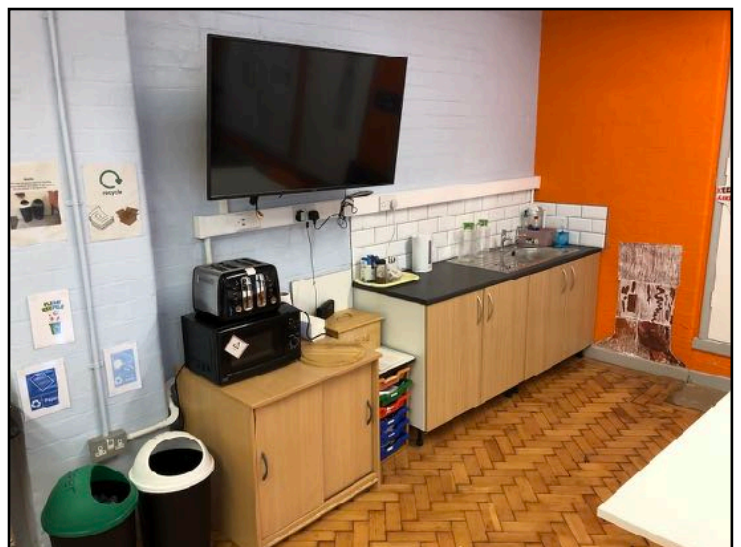
**Bredon** (30)

Youth Room set up and equipped using Lottery Funding. Large screen TV, sink, bean bags, sofa, table football, air hockey etc. Very popular with Boys Brigade and Girl Guiding groups.

Outside

**Cotteridge Church Garden**

An 'L' shaped space at rear and side of the building. Tables and seating, semi-permanent gazebo, greenhouse, fire pit etc. Planted with range of flowers, shrubs and fruit



*Bredon Room (Youth Room)*

trees. Accessed via steps from church building but level access from front terrace area.

### **Front Terrace**

Benches, flower beds, and level access through gate into Garden (see above). A large wooden cross was added to this area in 2022, and is now permanent, as a proclamation and witness to our faith in Christ Crucified and Risen.



### **Car Park**

A very small car park, with four spaces, plus one for Blue Badge holders.

### **Church Groups**

Boys Brigade. Stay-and-Play (Saplings). Fellowship Group. Cotteridge Crafters. Praying through Change. Spark (housegroup).

### **Other User Groups/Room Hirers**

Girlguiding. Communicate to You (C2U) Young Adult Educational group. Change, Grow, Live (CGL) (agency dealing with addiction issues). Board Games Group, Pre-School Groups (several). Children's Party Bookings. MP and Councillors Surgery. Central England Co-op Gardening Club.