

# Welcome to the Parish of Almondbury with Farnley Tyas



## ALMONDBURY WITH FARNLEY TYAS TEAM PARISH

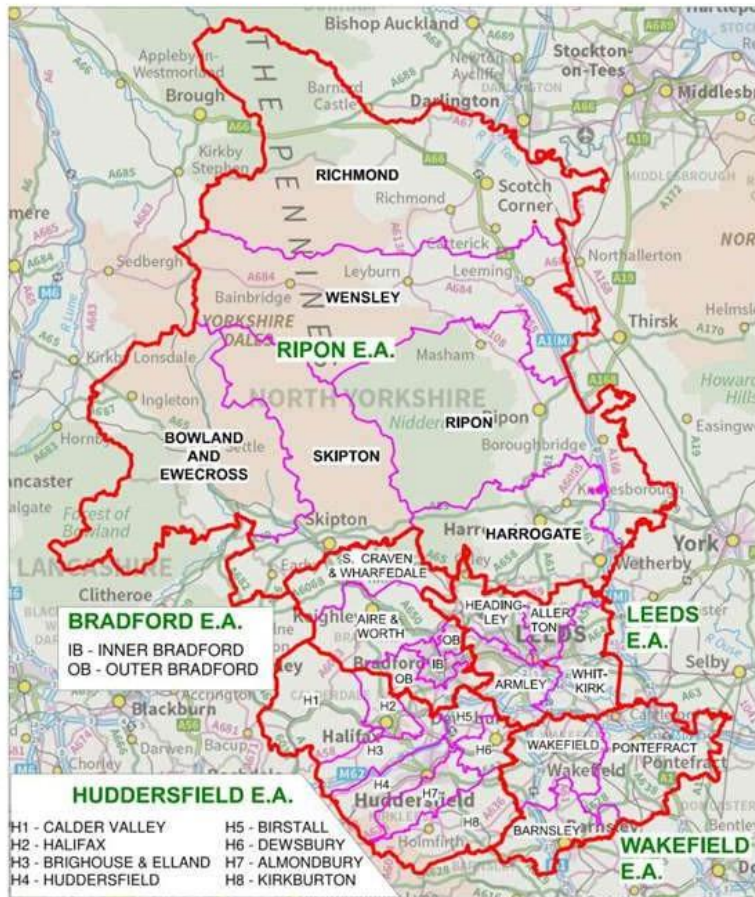
Our purpose is:

- *to grow in faith as the family of God*
- *to celebrate and share the love of Christ*
- *to show his love by our witness and service in the community.*

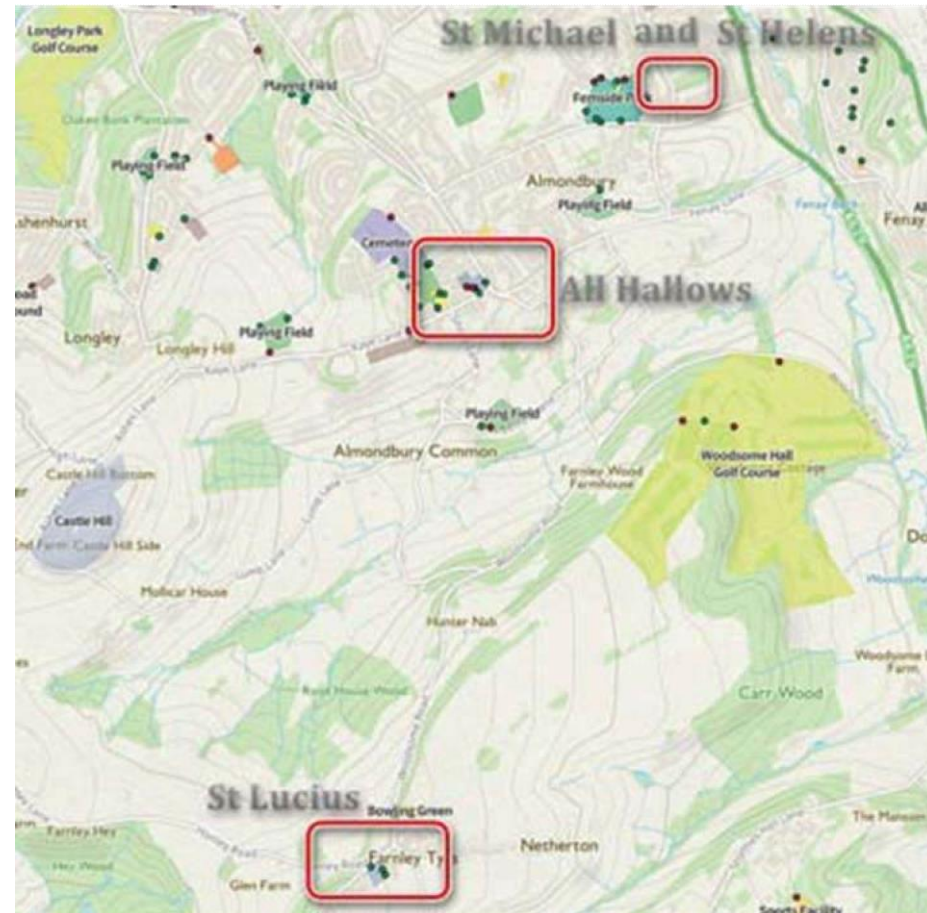


# Leeds Diocese, the Huddersfield Episcopal Area, and our Church Communities

**DIOCESE OF LEEDS  
EPISCOPAL AREAS AND  
DEANERIES FROM JANUARY 2017**



## Our Church Communities



It is 1.9 miles from All Hallows to St Lucius and 1 mile from All Hallows to St Michael and St Helen's

## Almondbury with Farnley Tyas

The Parish covers the villages of Almondbury and Farnley Tyas, both mentioned in the 1086 Domesday Book as belonging to Ilbert de Lacey. Almondbury is also home to King James's School which was founded in 1547 and received its Royal Charter in 1608. It lies on the edge of open countryside and Castle Hill, one mile west of the village, is a local landmark with magnificent all-round views and evidence of early fortifications.

Almondbury has its own shopping area with a thriving post office, a Co-Op, and a range of independent shops, cafés, restaurants, public houses, sporting and independent clubs. The Parish has well established medical facilities including a doctors' surgery, an optician, a dental practice and a private chiropractor.

Farnley Tyas is a small rural village surrounded by acres of open fields with a very active community group, W.I. and bowling club. It has a well patronised public house/restaurant. The church is well loved and serves a vital role in hosting many activities for the village and the wider community.

To the east of Almondbury village centre is the modern, dual purpose church of St. Michael and St. Helens which serves an area of post war social and private housing.

Open countryside is within easy reach of all areas of the Parish. It also has good links to the Yorkshire Dales, the Peak District National Park, the Hepworth Gallery, the Yorkshire Sculpture Park and numerous other attractions.

## Our Parish



- ❖ We celebrate as individual churches and together as a parish. Whilst each church family has its own style of worship, we share in prayer and enjoy combined parish services which take place at each church in turn.
- ❖ A wide variety of social and fundraising events take place throughout the year which are enjoyed by the whole community.

## Autumn



- ❖ Each church holds a Harvest Thanksgiving service with fresh produce and flowers being distributed to the elderly and housebound. Non-perishable goods go to our Food Share at St. Michael & St. Helen's. There is often a Harvest Supper with entertainment.
- ❖ A variety of events take place across the Parish including Craft Fairs, Concerts, Recitals, Bridge Lunches, Quiz Nights, and a monthly Film Club at St. Lucius' in winter
- ❖ All Hallows' joins with the village in hosting a Jazz Festival for a nominated charity each November.

## Advent and Christmas



- ❖ Each school holds a Carol Service and puts on a Nativity Play.
- ❖ Christingles are made by church members for the very well attended Christingle Services which are held in each church.
- ❖ St. Lucius sing carols around the village.

## Lent and Easter



- ❖ A Parish Lent course is held to prepare for Holy Week each year.
- ❖ Lent lunches are held at St. Lucius.
- ❖ Palm crosses are distributed to every child attending our Church schools, staff and residents in our care homes and the housebound in our communities.
- ❖ Meditations and Good Friday services are held in all three Churches. All Hallows' and Almondbury Methodist Church alternate as hosts of an evening service on Good Friday..

## All Hallows' 1



The area covered by All Hallows' is a little amorphous. It includes areas of great wealth and dire poverty, parts being amongst the most deprived in England. There are five schools in its area, all of which see the church as a great resource.

All Hallows' is a mediaeval building with elements of its 12<sup>th</sup> century foundation remaining and there is a written record of the institution of a rector of Almondbury from that date. The church is largely 15<sup>th</sup> century, completed in the early 16<sup>th</sup> century with a unique ceiling. In the 19<sup>th</sup> century the church was re-ordered. The church has been completely reroofed and the windows, two of which are 15<sup>th</sup> century, have undergone conservation.

In 1990 an interconnecting church hall with a room for smaller meetings, kitchen and toilets was added. This is a real asset which is well used by the church and community alike.

There is a closed graveyard with a garden of remembrance in current use.

All Hallows' has a lay pastoral network by which the pastoral care of the congregation is shared by 'Links', each responsible for a group within the congregation. We would like to reinstate our much-loved Healing Service on the first Saturday of each month.



## All Hallows' 2



A dedicated team of tower bell ringers call people to worship every Sunday and also for special occasions. All Hallows' is the only church in the area to continue holding a monthly Sunday Evensong which attracts people on a regular basis from outside the parish. It is also the base for the active parish Mothers' Union.

The church is well loved by the local community who support many social activities. It is also very popular for weddings and baptisms. We look to build on these contacts and turn affection and popularity of the building into a longing to know God.



There are good relations with the local Methodist Church with joint worship held for many years at Advent, the week of Prayer for Christian Unity, Good Friday and Remembrance Sunday. Joint Lent study groups also take place.

## St. Lucius



St. Lucius has been serving the people of Farnley Tyas Sunday by Sunday for nearly 200 years. At key moments in the life of the community; baptisms, marriages, funerals; we share our joys and sorrows.

There is a great affection for the church in and around the village and it is popular for baptisms and weddings. It is well used by community groups, especially the village women's institute and the Voluntarily Controlled first school.

The social area at the rear of the church is now a more versatile space. This allows us to hold more meetings, concerts, classes and functions, including a monthly Film Club in winter.

In 2022, we completed a new kitchen and toilet extension, which has greatly improved our facility for community events and outreach.

## St. Michael and St. Helen's



We are a small church with a big heart and warmly welcome all those who enter, whether to join us in worship or for social events.

Although we are a young church in comparison to All Hallows' and St. Lucius', many of our church family have worshipped here with their children, grandchildren and great grandchildren since its opening. Together with the wider community we share in times of both joy and sorrow at baptisms, weddings and funerals.

We currently hold traditional Sunday worship each week. In the past, we have held all age services, alternative worship on a Saturday evening, a weekly Bible Study Group, mid-week workshops for children and quiet mid-week prayer time with fellowship; all of which we would very much like to do again with new leadership.

Our multi purpose building has full disabled access and facilities and hosts a range of community groups including Brownies, Guides and Rainbows, young people with learning disabilities who are on the Duke of Edinburgh programme, Pilates and many varied internal and external events.

A steady programme of refurbishment has taken place over the last ten years including a new heating system, carpets and full redecoration. An ongoing maintenance programme is in place.

Our church family and the wider community look forward with great pleasure to welcoming a new Rector who will lead and inspire us to bring new life and the love of God to our worship and mission.

## St. Michael & St. Helen's Foodshare

The Parish Food Share is an important part of our mission and outreach.

During COVID we began distributing approximately 100 meals every Friday to families in the local community from St. Michael and St. Helen's. These were cooked and provided by a local restauranter, Ben Franco, with generous sponsorship from the business community.

Ben cooked his last meals at Easter in 2021 and we knew that we needed to continue in some way, so great was the need. On 9th April 2021, SMASH Food Share opened with a small team of dedicated volunteers who carry on the work today.

We operate as a non-referral food share and support, on average, 50 families and individuals every week – approximately 200 people with 500 to 600 non perishable items plus fresh fruit, vegetables and bread.

We could not do this without the generosity, support and prayers of so many people and businesses in our local community along with the members of all our three churches, Almondbury Methodist Church and our local schools.

With the help of our local councillors, a free, open house coffee morning runs alongside the Food Share with different agencies offering help and advice including the Samaritans, the neighbourhood police team, CAP, social services and Kirklees Customer Services team.



There are seven schools in the parish - three church primary schools, one of which has a resource provision for hearing impaired pupils, a complex needs school, a secondary school and a school for pupils with autism..

All Hallows' CE (VA) Primary School

We are a small, friendly, caring school where the staff get to know all of the pupils and families very well, which makes them feel secure and valued. We are very proud of our child-centred curriculum.

Our vision for education ensures we are:

Educating for **COMPASSION**:

Our children learn to disagree well with a strong focus on relationships and participation in our community. Our curriculum allows children to develop their empathetic and thoughtful nature through our holistic approach to education and through our restorative approach to behaviour management. Our planned and spontaneous courageous advocacy projects give the children a voice in society and enable them to believe they can be a catalyst for change.

Educating for **ASPIRATION**:

Children enter school with skills and abilities broadly below typical for their age. Our aim is to broaden children's horizons and allow them to have hope, desire and ambition to achieve. The heart of our curriculum is based on oracy and vocabulary development to set the foundations for their learning. We methodically build the knowledge, skills and understanding that pupils require to confidently move to the next stage of their education and into adult life; celebrating everyone's unique humanity without exception or exclusion.

Educating for **RESILIENCE**:

We equip our children with the ability to overcome and recover from difficulties quickly by teaching them how to cope in spite of set back and barriers. Our curriculum develops the children's growth mind set and meta-cognition; they are confident to make things right when things go wrong. They learn from these experiences in order to develop their understanding of how to manage things differently in the future.

Together, our vision, values, focused academic teaching and values lead approach to school improvement mean that our children, staff and visitors love coming to our school. Our pupils leave as compassionate, aspirational and resilient young people; regardless of academic success.



## Farnley Tyas Church of England First School

- ❖ Welcome to our school. We are all very proud of our small, welcoming and friendly school. The staff, parents, governors, pupils and the community work together to achieve the very best for all the children at Farnley Tyas Church of England First School. As a Church school we have strong links with our local church, St Lucius, and the wider Almondbury parish.
- ❖ The strength of our school is that all children are known personally, their needs can be met individually and we ensure that every child can meet their potential in a caring, Christian environment.
- ❖ We have high expectations and standards of attendance, achievement, behaviour and involvement in school life. We work hard to deliver a curriculum which meets the needs and interests of all our children.
- ❖ Farnley Tyas CE First School is part of the Shelley pyramid of schools. Children generally move onto Kirkburton Middle school at the end of Year 5 (age 10) and then onto Shelley College. There are strong links with all schools in the pyramid.
- ❖ Farnley Tyas First School sits very much at the heart of our local community. The School provides inclusive education in accordance with our historic Church of England foundation. Our Christian ethos is firmly embedded within our school values of: Trust, Compassion, Friendship, Peace and Forgiveness.



## Lowerhouses CE (VC) School



### School Vision

**Working and achieving together to enrich lives and nurture bright futures**

Lowerhouses School welcomes children from the community whatever their religious or cultural beliefs. We work and achieve together, recognising that each member of the school community is a unique person created in the image of God and loved by him. That it is in our relationships with each other and with God, that we can experience and enjoy the fullness of life that God intends for us.

The ethos at our school is encompassed in our 'Circle of God's Care' and based on our core Christian values of: **Trust, Forgiveness, Friendship, Truthfulness, Respect and Responsibility.**

Everyone is expected to exercise self discipline, take responsibility for their actions and show care and concern for people, the school, its contents and the wider community. It provides all those in our school community the opportunity to develop their spirituality and a sympathetic understanding of faith.

**It is based around care and respect for:**

**Ourselves, Others, Our Community, Our World**

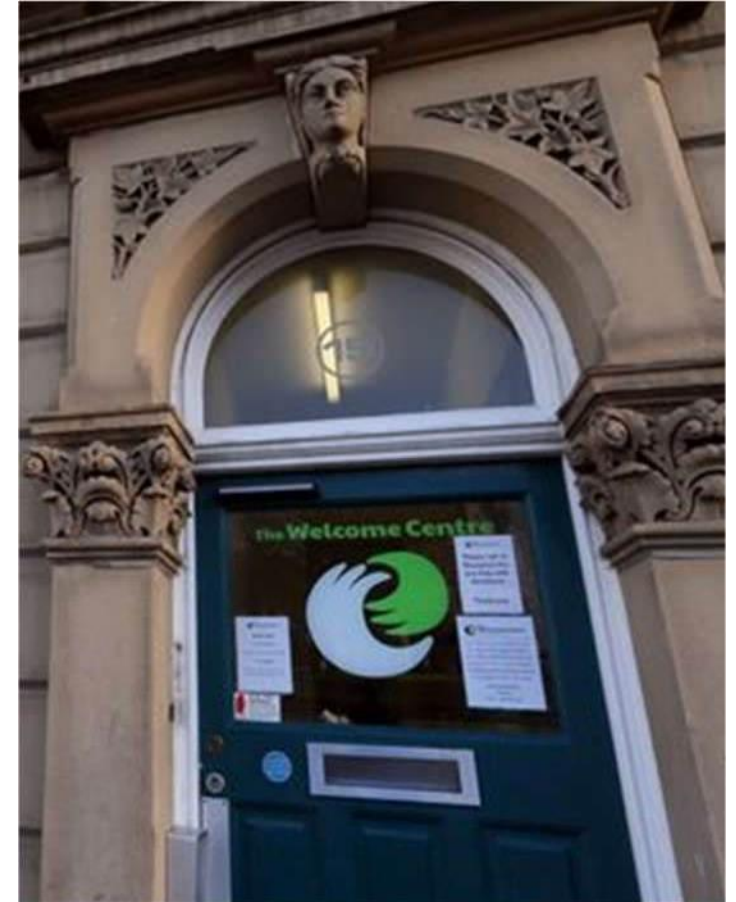
## Charitable Support

All three churches in our parish are actively involved supporting charities at home and overseas.

### Overseas

- ❖ Christian Aid
- ❖ Teams For You (Shoebox Appeal)
- ❖ Our twin town of Oliyo
- ❖ The Leprosy Mission
- ❖ Water Aid
- ❖ MSF

- ❖ The Welcome Centre for Huddersfield  
People in Crisis
- ❖ The Childrens Society
- ❖ Hand to Mouth Ministries
- ❖ Kirkwood Hospice
- ❖ The Poppy Appeal
- ❖ RNLI
- ❖ Yorkshire Cancer Research





## Mission and Outreach

- ❖ Little Hallows
- ❖ St. Michael & St. Helen's weekly coffee morning
- ❖ St. Michael & St. Helen's weekly Food Share
- ❖ St. Lucius' weekly Cafe and monthly Film Club
- ❖ Thorpe House – Adult Mental Care Home

**In addition the Almondbury Mothers' Union branch with members from all 3 churches take mission and outreach to:**

- ❖ Away from it all Holidays
- ❖ Mothershare – which provides equipment for new born babies
- ❖ New Hall Prison
- ❖ Pack & Prattle – members assemble hospital toiletries and bags for women and men's refuges.
- ❖ Pennine Domestic Abuse Partnership

They are also part of Home Communion Team and host all schools on Remembrance Day



## Our Parish Personnel

- ❖ One lay minister
- ❖ Four Churchwardens
- ❖ One PCC
- ❖ Three Church Committees
- ❖ One Parish Administrator (part time)
- ❖ Caretaker (All Hallows only)
- ❖ A committed church family who seek to share God's love with the wider community. We are willing and eager to work with our new Rector to develop new styles of worship which will engage families and young people.

Each church has authorised administrators for Holy Communion and extensive rotas of serving sides-persons, lesson readers and intercessors.

For many years our three churches have appreciated the contributions brought to our worship by our curates and the ordinands who have been placed with us from the Community of the Resurrection and St.Hild College. This gives a sense of the wide range of traditions and training that can be drawn on from both institutions which are close by in Mirfield. We hope to once more be a training parish and offer ordinands the opportunity of short or long term placements.

## Parish Survey

We carried out a survey of the whole Parish to find out what their key requirements were for our new vicar.

These are summarised below, however the need for someone who was skilled in Pastoral Care stood out from the other issues, which were of similar ranking.

- ❖ **Pastoral Care:** A positive commitment to pastoral care.
- ❖ **Experienced:** Experience of roles in the clergy and / or roles in secular life that will have seen life and humanity in its many guises.
- ❖ **Respect:** Recognition that we are one Parish with three distinct congregations and styles of worship - respecting their heritage and traditions, but prepared to guide all three to a new future.
- ❖ **Mature:** In terms of approach and judgement.
- ❖ **Engage:** A positive commitment to engage with the whole community by being present in the Schools, Parish and Community events.
- ❖ **Visible:** A positive commitment to be a visible presence in the community.
- ❖ **Vision:** A vision and a plan for nurturing and growing the Parish.

## What we need from a Rector

### Qualities:

- ❖ Pastoral expertise, demonstrating love, empathy and compassion
- ❖ Experience of roles in the clergy and / or roles in secular life that will have seen life and humanity in its many guises.
- ❖ A good communicator, who is approachable with a sense of humour
- ❖ A vision and plan for nurturing and growing the Parish
- ❖ A positive commitment to be a visible presence and engage with the whole community by being present in the schools, Parish and Community events.
- ❖ A love for the Gospel and mission, one who is forward thinking and can make the Gospel relevant
- ❖ Proven ability to work and engage with families and young people and bring them into the church family
- ❖ Recognition of the importance of guiding, supporting and working with all the schools in our Parish
- ❖ Flexibility to work within diverse settings with people of all ages and perspectives
- ❖ Recognition that we are one Parish with three distinct congregations and styles of worship - respecting our heritage and traditions but prepared to guide all three to a new future.

### Skills:

- ❖ The ability to:
- ❖ Share their pastoral expertise and lead a pastoral team in the Parish by example
- ❖ Lead, invigorate and inspire us to collaborate in bringing God's love to our communities
- ❖ Develop outreach to families and young people
- ❖ Creatively introduce different styles of worship and engagement
- ❖ Delegate, train and equip future leaders within the church and mentor key people
- ❖ Be proficient in IT skills and the use of social media
- ❖ Recognise and understand the importance of Safeguarding in a Parish context

**If you are that person we would love to hear from you!**

## What can we offer you?



- ❖ Three diverse but united church families who will give you their wholehearted support in your ministry and mission.
- ❖ A Parish which will embrace new ideas and ways of worship which are relevant in today's changing world.
- ❖ Parishioners who are eager to help you to engage with families and young people to bring the next generation into church life.
- ❖ A Parish Share that is paid in full each year.
- ❖ A new home. The Rectory is a much loved modernised Georgian family home with easily maintained gardens. It lies in the centre of the Parish adjacent to All Hallows' and within walking distance of the facilities in Almondbury village. The Rectory has recently had a new kitchen and secondary glazing.
- ❖ A beautiful area in which to live, surrounded by friendly, generous Yorkshire folk who are sure to give you a warm welcome to God's own county.
- ❖ Most importantly, we will do all we can to help you find happiness and fulfilment in our Parish.

Thank you for taking the time to read about our Parish

There is more information on:

<https://www.almondburywithfarnleytyaschurches.org/welcome.htm>

<https://www.allhallowsschool.org.uk/>

[www.farnleytyasfirst.co.uk](http://www.farnleytyasfirst.co.uk)

<https://www.lowerhouseschool.co.uk>

[https://en.wikipedia.org/wiki/Farnley\\_Tyas](https://en.wikipedia.org/wiki/Farnley_Tyas)

<https://www.youtube.com/watch?v=8h4x2ZchcF8>

