

ST RICHARD'S CHURCH

ALDWICK

Charity no:1206799



Parish Profile

Day by Day: know, love, follow

August 2024

CONTENTS:

Foreword - Letter from Bishop Martin

1. WELCOME
2. THE PARISH - WHERE WE ARE
3. OUR CHURCH AND MISSION
4. WORSHIP
5. MUSIC
6. CHURCH GROUPS AND ACTIVITIES
7. FINANCES
8. STRUCTURE
9. WHAT WE CAN OFFER THE NEW PRIEST
10. WHAT WE WOULD LIKE THE NEW PRIEST TO OFFER
11. LOOKING AHEAD

Letter from Bishop Martin

In 2025 this diocese celebrates the 950th anniversary of witness and evangelisation from a mission base in Chichester, building on the earlier mission founded by St Wilfrid at Selsey. 2025 also marks the 1700th anniversary of the Council of Nicaea with its reminder of the formative claim upon us of the catholic creeds.

These anniversaries are more than historical footnotes. They speak powerfully about the richness of faith and mission that is our inheritance locally and universally.

Inspired by that inheritance, we seek to be a household of faith that is endlessly curious about how the Holy Scriptures and the sacraments of the New Covenant enable us to know, love and follow Jesus Christ in today's noisy and distracted world.

If God is calling you to join us in the task of proclaiming the mystery of faith in some part of this diocese, we pray that the contribution of your gifts and experience will enrich our witness and deepen your own discipleship.

We take very seriously the call to diversity and radical inclusion as characteristic of the Church's mission. For this reason we welcome applications from ordained women and Global Majority Heritage clergy, who are under-represented in those who serve this diocese.

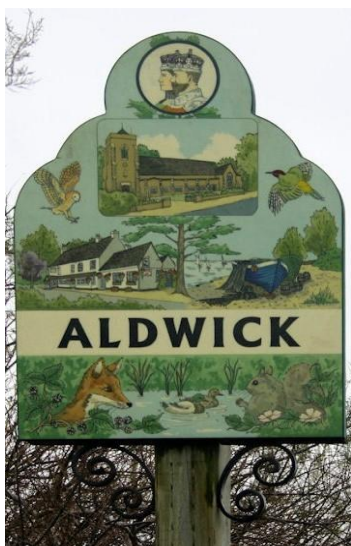
+Martin

1. Welcome

Welcome to this Profile of the Parish Church of St Richard, Aldwick. We hope that over the following pages you will find much to interest you as a prospective parish priest. We are an Anglican Church family worshipping at St Richard's in the heart of the Parish of Aldwick in the Diocese of Chichester. We are a welcoming community, committed to diversity and inclusion, grounded in the sacraments.

Our parish church website is: <https://www.achurchnearyou.com/church/4756/>

2. The Parish – Where we are



Aldwick is within walking distance of Bognor Regis town centre and 6 miles from the Roman and county city of Chichester, with its Cathedral and University. It is a seaside civil parish in the Arun district of West Sussex which contains part of the western suburbs of Bognor Regis. The parish includes the growing settlement of Rose Green, and its total population is around 12,000 scheduled to increase with substantial new developments. The parish has a strong sense of community with many facilities including a library, shops, parks, doctors' surgeries, children's play areas and petrol station, and has good public transport links to Bognor Regis, Chichester, and other towns along the coast, with London less than two hours by train. The beach walks around nearby Pagham harbour and

the proximity to the South Downs National Park all contribute to making this a very pleasant part of the county in which to live.

The parish of Aldwick is well served by church communities. We share Gossamer Lane with both a Roman Catholic Church and a Free Church (Baptist), all of which belong to Churches Together in Bognor Regis.

In the parish are Rose Green Infant School and Rose Green Junior School. With both schools we have continued to develop and build on a good relationship - through assemblies, school teaching visits to the church, invitations to the Incumbent to visit classes and most successfully welcoming the Junior school to the church for their Carol Service at Christmas.

St Richard's holds Ex-Officio and Foundation Governor seats at Nyewood Infant and Junior CofE schools, a role greatly developed in recent years. Good relationships both pastorally and practically are enjoyed with these schools, their pupils, staff and families. Both schools are in the process of joining the Bishop Luffa Learning Partnership – Bishop Luffa is the closest CofE Secondary School, located in Chichester, that many of our young people go on to.

3. Our Church and Mission



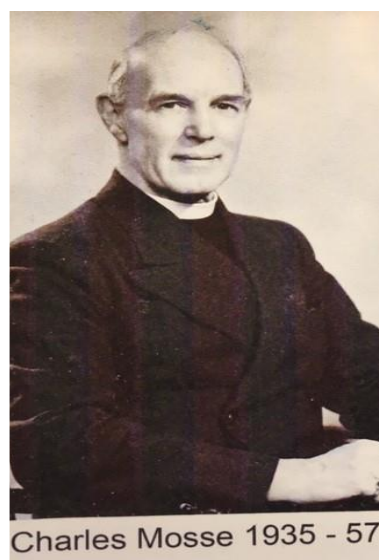
St Richard's church is, and has been, the focus of the Parish of Aldwick since its consecration 90 years ago, catering for the westward expansion of Bognor Regis towards the ancient parish of Pagham from which it was formed.

It stands back from the main thoroughfare between the original village site and the shopping area at Rose Green. The church tower stands as a beacon on a relatively flat coastal plain within sight of Chichester Cathedral, Goodwood, and the folds of the South Downs National Park some 10 miles distant.

Dedicated to the glory of God in 1934, St Richard's is the last stone church to be built in Sussex under the patronage of St Richard and in 1935 Revd Charles Mosse was inducted and instituted as the first

vicar of Aldwick. The Mosse family, through their gifting, financed not only the building, but many of the church fittings including the initial organ, bells, main altar, stained-glass windows and the vicarage. The church building provides a focal point for various community activities.

An important part of our mission is to be a place of generous hospitality for the whole community. We demonstrate this in many ways: for example, the building is open daily to the public for prayer and private visits. We continue to be a place sought out for the celebration of life events and saw an encouraging increase in occasional offices (baptisms, weddings and funerals) under the previous priest-in-charge, which have also led to growth in the congregation numbers. With an ageing congregation and population an important ministry of the church is that of pastoral visiting and taking of home communion.



Charles Mosse 1935 - 57



The Bell Tower practises weekly and rings all 8 bells on Sunday morning. They also ring on special local and national occasions, serving as a reminder to all in the Parish of Aldwick, with recent recruitment being positive, including youth.

The church has hosted various concerts especially the now annual concert by local choir Sounds Familiar. It is available to groups, and we welcome several for their annual celebrations throughout the year. Groups will often also use the Mosse Hall for their refreshments and AGMs.

The Mosse Memorial Hall provides a valuable parish asset. It is fully managed and maintained and operates at a profit to the church, providing facilities for a diverse range of local organizations, including local residents' associations, Rainbows, Brownies, Slimming World, Pilates, Art Group, Stamp Club, Mothers' Union and Little Stones Pre-School. It also serves as a polling station for local and national elections and is used for festivals, fairs, and other events, thus helping to maintain good relations in the community. It is available for hire at other times.

St Richard's is involved in local charity work and supports overseas mission. Among the many local charities, the church has supported L'Arche, Stone Pillow and My Sisters House. We have an ongoing commitment to support our local food bank, members of the congregation save for the Children's Society in 'donation boxes' and we also collect on behalf of Christian Aid week. During Lent we link with our neighbouring church in Pagham for Lent lunches, the proceeds of which are shared amongst local and overseas charities. We are intentional about our giving and so seek to support local/national/international charities with our Christmas service collections. Additional national and international appeals in times of disaster or crisis are covered with retiring collections. Our church also engages with the Parish Council, following with interest issues affecting our neighbourhood. We continue to work towards our mission statement: "Day by Day: know, love follow".

4. Our Worship Services

Worship is central to the life of our church, which presently consists of 2 Sunday services. We have retained the popular monthly family service and the Churchwardens have plans to reintroduce a mid-week Eucharist, which has been suspended during the current interregnum. Historically we have also held two evening prayer meetings a week. Services are being led by a rota of visiting priests, mainly retired. They are supported by 7 licensed ministers of communion, a rota of readers and welcomers. An average of 50-75 communicants attend the Sunday services. On Feast days and Rites of Passage services, there can be up to 100.

We value the liturgical and sacramental tradition of worship at St Richard's and seek to uphold the accepted Anglican forms and practices with robed clergy and choir, while being open to new approved liturgical content.

During the interregnum we are striving to maintain the liturgical life of the parish which is enjoyed so much by our worshipping community. In addition to the regular weekly services, we are offering the following: Nine Lessons and Carols on the evening of the fourth Sunday in Advent, Crib service on Christmas Eve morning, First Mass of Christmas (Midnight Mass), appropriate celebrations of Epiphany and Candlemas, Ash Wednesday Liturgy with imposition of ashes, Mothering Sunday, Stations of the Cross during Lent, Services of Holy Week and the Easter Triduum, Ascension and Harvest Festival. Historically the Last Post and Act of Remembrance within the sung Eucharist on Remembrance Sunday, although in recent years this has been a joint service held at our neighbouring church St Thomas à Becket, Pagham where the war memorial for the historic parish is maintained.

5. Music

The congregation is led musically each week by the Director of Music and a growing competent robed choir. The choir perform settings, psalms and anthems at the Sunday Eucharist, accompanied on the organ by our Director of Music. They are instrumental in introducing new hymns into our worship. They also act as cantors and sing at various special services and feast days, taking a pivotal role in our service of nine lessons and carols. In addition, our Director of Music is developing a children's choir, who are involved in some Sunday services.



6. Church Groups and Activities



St Richard's has a range of organizations which are currently active and consistently supported.

The Mothers' Union has been long established and active both within the parish and Diocese. Monthly meetings are held in the Mosse Hall, often with a guest speaker, usually as an open meeting. New members are welcomed and encouraged.

The Flower Group decorates the church every week and on special occasions, self-funded by donations from the congregation, often commemorative ones, such as Easter Lilies and Christmas Candles.

A Walsingham cell was established many years ago and continued to run until the Covid pandemic. Members of the congregation continue to enjoy a pilgrimage and support The Shrine of Our Lady of Walsingham.

Other community groups include The Bear Necessities, a discussion group for women, and Pints of View, a conversation for men.

Coffee, Cake & Conversation is an opportunity for the whole parish and wider community to meet together informally each month.

The long-established Art Group meets weekly in the Mosse Hall, where they periodically also showcase their work by holding exhibitions.

Over recent years we have expanded our mission, outreach and community events. On the first Sunday of each month, following our family eucharist, we have 'Lunch on Sunday' in the Mosse Hall. This is an opportunity for members of our congregation, friends and families to come together over a meal, provided by volunteers from our congregation. It is enjoyed by all, and particularly appreciated by those who would otherwise eat alone on a Sunday. We run a Good Friday Children's Workshop in the Mosse Hall, followed by a short act of worship in church. Assisted by volunteers from Pagham, this community event attracts children from both parishes, including children of families and friends and organisations that use the Mosse

Hall. In 2023 we held the first Christmas Tree Festival for many years, which culminated in community carol singing and prize giving. It was a resounding success for community relations, for bringing people into the church as well as for fundraising.

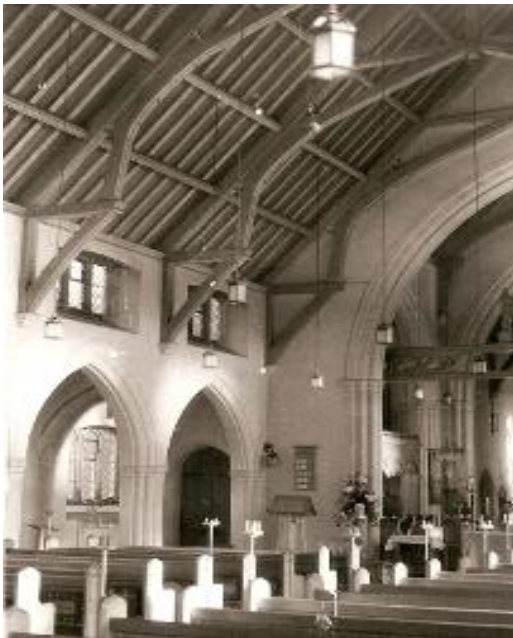
In addition, St Richard's hosts social events run by members, often held in the Mosse Hall, and invites the parish community through emails, special notices and social media. These include Christmas Fair, Harvest Fair, Fish 'n Chip and Quiz nights which are well attended and enjoyed.

Communication with parishioners is maintained by a weekly Parish pew sheet, regular emails, web site notices and a Facebook page.

We are fortunate to have a great team of helpers to assist with the smooth running of the church and its services.



7. Our Buildings & Finances



Our church building is well cared for and is much treasured by the local people, many of whom would have been baptised or married here. The building is designed in a restrained Gothic style, with elevations of coursed random stones with limestone ashlar and dressed stone to buttresses. Capable of accommodating 300 people in oak pews and well maintained in accordance with the requirement and recommendations of routine Diocesan Quinquennial Review. The last was completed in May 2019 and we are currently undertaking fundraising for the necessary repairs, which includes stonemasonry, rainwater goods and other maintenance. Some £85,000 is required in total, and to meet this a Churchwardens' Appeal

has been set up, with donations coming in at the time of writing and grant applications are ongoing. A Quinquennial works officer was appointed by the PCC and a small working group, including Wardens meets regularly. Faculty permission for the repairs has been given. The Churchwardens remain confident that this vital work will be completed by Summer 2025.

St Anne's chapel stands within the south side of the church and is marked by St Richard's light which is lit every Sunday at the start of the services. The chapel is used for the mid-week Eucharist, for private prayer, services before PCC meetings and other special events of a spiritual nature. It also houses our Aumbry, where the Blessed Sacrament is reserved. It is a well-loved place of peace and calm for many.

The substantial church garden surrounds three quarters of the building including an area for the internment of ashes. The large grassy area on the south facing Gossamer Lane provides a versatile additional space for church and community events such as celebrating anniversaries when it acts as a witness to passing pedestrians and motorists, and we are fortunate in having a large car park serving the church and the hall.

The original Vicarage is situated on Gossamer Lane. This large, detached family house, with versatile living accommodation, stands on a key corner plot directly opposite the church. Currently it is rented out. Working with our neighbouring Parish of Pagham, and in conversation with the Bishop, flexibility can be offered in the housing of our future Priest and their household. The church also owns two houses in the area which are providing valuable income for the running of our church, and which are managed by letting agents.

The PCC continues to manage its resources in line with its objectives and policies. The church pays its full contribution to the parish share, as required by the Diocese, in line with current Arundel and Bognor Deanery guidelines. Members of the congregation are encouraged to give their regular offerings using the Parish Giving Scheme, weekly collections, weekly envelopes, Direct Debits, mobile contactless payments or using QR code. At present it costs circa £1,500 a week to maintain our church.

Currently, we hold around £6,000 cash in hand. Our end of 2023 year accounts, approved by the PCC and at the APCM show we had some £16,000 in PCC bank accounts with a further £140,000 investments, £62,000 of which are restricted. Property assets are valued in accounts at £201,000, (which includes two houses at purchase value not market value), current total assets sit at circa £362,000 (valuation 31st December 2023).

8. Organization & Leadership Structure

The parish falls within the Diocese of Chichester and the Deanery of Arundel and Bognor. The day-to-day management of the church is the responsibility of the PCC. It has always met regularly and is currently meeting every two months. During the interregnum it is chaired by a Lay Chairman, who is also one of the Church Wardens. It has 14 members all of whom are established and enthusiastic members of the Church community, elected by those on the electoral roll, and look forward to working with a new priest to develop our mission and witness. The Leadership Team, consisting of Priest (vacant), Church Wardens, Treasurer, Quinquennial works officer, and the PCC Secretary, who as a Standing Committee oversee the day-to-day church business, transact the business of the PCC between meetings and serve as a communication forum.

9. What we can offer the new priest

- A Parish set in a beautiful part of West Sussex.
- A friendly, welcoming, and supportive congregation.
- Openness to new leadership and new approaches to worship.
- Fellowship and support through prayer and action.
- A supportive and dedicated PCC.
- A sizeable vicarage, or flexibility with housing and an attractive church building.
- A great opportunity to minister and reach out to the people of the Parish of Aldwick and accompany them in their journey of faith.

10. What we would like in our new priest

We are praying for a priest who has a strong faith and commitment to prayer, who is willing to develop the pattern of worship across the parishes of Aldwick and Pagham, increase our worship programme and address the need for Bible teaching and Christian nurture to strengthen our understanding of the Faith. We would expect him/her to maintain a sensitive pastoral approach to all.

We would appreciate a leader who is a strong and confident communicator and who will nurture and affirm the contributions of our lay membership, seeking to delegate, consult and build consensus, but able to be decisive when necessary. We would expect the priest to lead God's mission for our parish both by service, word and sacrament.

Our desire is for a priest who will strengthen and equip us all in our discipleship and for the work of mission and ministry in our community, sharing fully in our life together. We desire a person of prayer and discernment who will take time to intercede for the Church and create spaces for the prayer life of the members. He/she should be a careful listener, willing to accompany members at various stages of their faith journey.

Our young people would like somebody friendly, welcoming, fun-loving and joyful, able to communicate with everyone and anyone in the parish and prepared to work to encourage younger people to become involved in the church and to facilitate activities for the youth of the parish.

Our leadership would like a priest who is willing to work collaboratively with the PCC to support existing activities in the church and to encourage some new activities and to raise the profile of the church within the parish and the wider area of Bognor Regis.

11. Looking ahead

We are striving to retain a Christian presence and home for the people in the Parish of Aldwick, continuing to create an environment where all are welcome, playing an active role

in our deanery, diocese and maintaining our support for mission and outreach within our parish and beyond.

We are eager to see further growth in membership especially as we see the congregation getting older and so we would welcome more young people and families with children. We seek to achieve this, while maintaining a strong sense of community and close relationship with each other and our rich Christian heritage which we value so highly.

We are excited about our faith journey in the Lord Jesus Christ and would like further encouragement, teaching and practical guidance and leadership from our next priest to build on the best of the existing practices and to explore new ways of being a flourishing church.

We have dedicated time and prayer to seeking out God's purpose for St Richard's. Our vision is to grow in faith, in worship and fellowship and serve our neighbourhood, according to God's leading.

Thank you for taking time to read our profile.

Where we started – the Church in the wall

