



PARISH BROCHURE MARCH 2025

RECTOR FOR THE BENEFICE OF LOWER TEESDALE

**Incorporating the Parish of Startforth with Brignall, the
Parish of Bowes, the Parish of Romaldkirk and the
Parish of Laithkirk**

Introduction

The Benefice of Lower Teesdale comprises villages, hamlets, and farmsteads in this beautiful area of South-West County Durham. Large parts of Teesdale fall within the North Pennines National Landscape and it is here that the River Tees rises below Cross Fell.

Teesdale's principal town and most populous settlement is Barnard Castle, a historic market town that is home to the renowned Bowes Museum. It also includes the small town of Middleton-in-Teesdale and a number of villages, including Mickleton, Romaldkirk, Cotherstone and Bowes. Middleton-in-Teesdale was a lead-mining centre, and plentiful traces of this industry can be seen round the adjoining slopes and side-valleys. On the South side of Teesdale is the Bronze Age burial site of Kirkcarrion.

Our Rector will live in the well-proportioned vicarage of Ashbourne House in Cotherstone, ideally situated to access the entire benefice.

Teesdale gave its name to the former Teesdale district of County Durham, although the south side of Teesdale lies within the historic county boundaries of the North Riding of Yorkshire. Formerly the Startforth Rural District, it was transferred to County Durham for administrative and ceremonial purposes on 1 April 1974. Teesdale lies within the parliamentary constituency of Bishop Auckland.

The Rector will serve these lively communities with a good mix of age ranges, with two Primary Schools, one of which is Church of England aided. Employment is in a range of industries, farming, services, tourism and pharmaceuticals (Glaxo Smith Kline). His Majesty's Young Offender Institution (HMYOI) Deerbolt is also situated locally. HMYOI has its own dedicated Chaplaincy team. Unemployment across the Benefice is less than 2%.

The tradition of the churches is central, rural with reverence for the Sacraments and an expectation of good preaching. There is one Reader, and considerable assistance continues to be given by retired Clergy. The churches all have active lay involvement with a good record of on the ground engagement. These people are keen to work with a Rector who will help them to reach out to families and younger people, to deepen discipleship and understanding of the faith and to encourage the gifts in every member.

The Diocese of Leeds

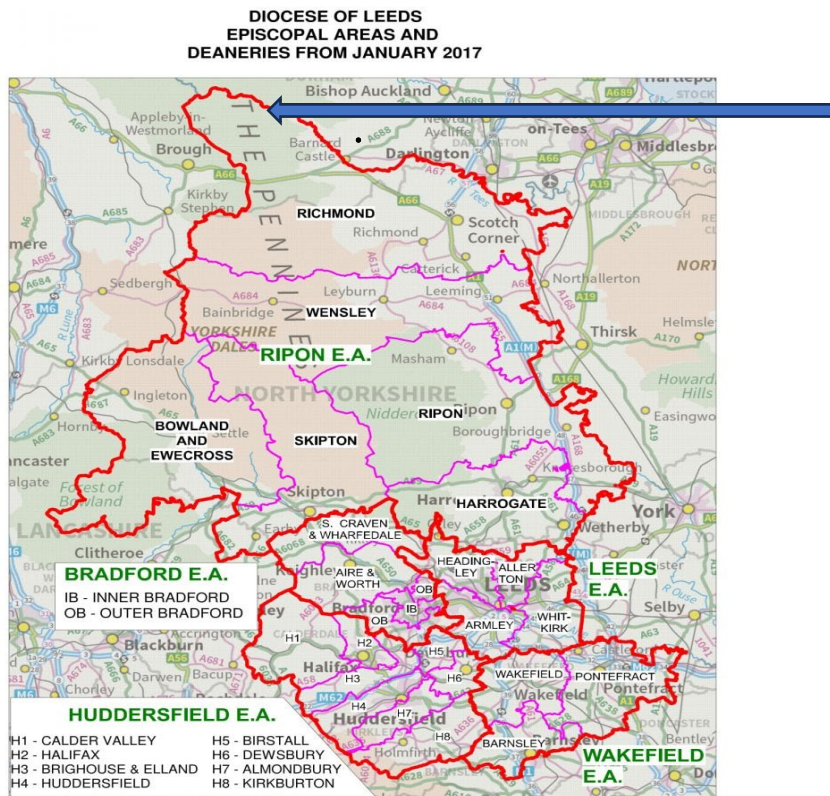
The Diocese of Leeds, now in its eleventh year comprises five Episcopal Areas, each coterminous with an Archdeaconry. This is now one of the largest dioceses in the country and its creation is unprecedented in the history of the Church of England. It covers an area of around 2,425 square miles, and a population of around 2,642,400 people.

The three former dioceses were created in the nineteenth and early twentieth centuries to cater for massive population changes brought about by industrialisation and, later, mass immigration. The diocese comprises major cities (Bradford, Leeds, Wakefield), large industrial and post-industrial towns (Halifax, Huddersfield, Dewsbury), a spa town (Harrogate), market towns (Skipton, Ripon, Richmond, and Wetherby), and deeply rural areas (the Dales). The whole of life is here, along with all the richness, diversity, and complexities of a changing world.

The Diocesan Bishop (The Rt Revd Nick Baines) is assisted by five Area Bishops (Bradford, Huddersfield, Kirkstall, Wakefield, and Ripon) and five archdeacons (Bradford, Halifax, Leeds, Pontefract, Richmond & Craven). Our Bishop of Ripon is the Rt Revd Anna Eltringham.

Our vision as the Diocese is about confident clergy equipping confident Christians to live and tell the good news of Jesus Christ. For all of our appointments we are seeking clergy who have a joyful and confident faith which has inspired a track record of church growth, both numerically and spiritually.

The Lower Teesdale Benefice is situated in the Northern most part of the Diocese shown by the arrow.



Draft Mission and Pastoral Measure Pastoral Scheme

This provides for a reduction in parishes from four to two:

- The union of the parish of Bowes and the parish of Startforth and Brignall
- The union of the parish of Romaldkirk and the parish of Laithkirk
- The designation of the parish churches of the new parishes
- The number of churchwardens for the new parishes

The scheme has been approved by the Ripon Area Mission and Pastoral Committee but is being held in abeyance until our new Rector has been appointed.

Safeguarding

The Lower Teesdale Benefice has a Safeguarding Officer, Penny Sunderland. Her responsibilities include:

- Ensure effective safeguarding arrangements are in place across the Benefice;
- Act as a point of contact to assist with safeguarding concerns, including those where someone may appear to pose a risk to a church community;
- Offer practical advice on policies, procedures and practice guidance;
- Deliver safeguarding training in line with the national programme;
- Advise on safe recruitment and DBS issues where there are blemished disclosures.

The six Churches of the Lower Teesdale Benefice

Bowes - St Giles' Church, Grade II listed, Bowes Parish

This small, rural village is approximately 4 miles from Barnard Castle and is situated on the fringe of the Pennines, to the south of the A66 partly dualled carriage way. The Church is located towards the centre of the village and has very close links with Bowes Hutchinson's Church of England Aided School part of the Bowes Cotherstone Federation (BCF).

Bowes has a strong historical past, housing the remains of an ancient roman fort. The church has a similar historical

origin, with evidence of 13th century carvings. There is a strong Charles Dickens connection, as he immortalized Shaw's Academy, Dotheboy's Hall in his novel Nicholas Nickleby.



**Startforth - Parish Church of the Holy Trinity 1863,
Grade II listed, Startforth Parish**

Startforth, near to Barnard Castle, lies on the south side of the River Tees and has three separate parts to it. Low and High Startforth and Startforth Park. The village has a mix of old and new properties. Of note are the new housing developments on the Bowes Road totaling 275 homes, which have seen the largest increase in population within the Benefice in the last 7 years.



Brignall – Chapel of Ease of St Mary 1833, Grade II listed, Startforth Parish

The village name Brignall is probably of Anglo-Saxon origin meaning “bridges” suggesting that the village grew up where the ancient trade routes found a crossing point over the River Greta.



Romaldkirk – Parish Church of St Romald 12th Century, Grade I listed, Romaldkirk Parish

Romaldkirk is a village with extensive greens on which village stocks and parish pumps remain. The church is known as the “Cathedral of the Dales”. Much of the building is Norman, but parts of a pre-conquest church can be seen at the base of the Chancel Arch.



Cotherstone – Chapel of Ease of St Cuthbert 1881, not listed, Romaldekirk Parish

Cotherstone is a Dales village on the south bank of the river Tees that has grown from an agricultural community and has been designated as a conservation area.



The church was erected in 1881 and consists of chancel, nave, vestry, organ chamber and west tower containing a peel of six bells.



Laithkirk – Parish Church – no dedication, Grade II listed, Laithkirk Parish

Laithkirk is a small hamlet in Teesdale (Lunedale) between Mickleton and Bowbank near Middleton-in-Teesdale. The views from the Church are truly stunning.

The Church was originally a 15th century tithe barn belonging to Lord Fitzhugh, converted, repaired and re-roofed in 1826. “Laith” is a Saxon word meaning barn. It became a Parish Church in 1844.







Mission of the Benefice

1. The Churches have all worked hard to develop Mission activities, in particular:
 - Fostering and maintaining strong links with the local schools and the preschools.
 - Seeking more involvement of children and families.
 - Holding Services such as the Harvest and Plough Services which are trying to reflect more closely the nature and needs of the community.
 - Being proactive in seeking links and communicating with members of the parish.
 - Organising and addressing wider events
 - Ensuring Open Churches and for Heritage Open days.

2. The areas of the parishes or groups within them that have been largely untouched by the church are:
 - We have generally included the young and the older members but more needs to be done to reach out to the 'middle ground' to the young couples and teenagers.
 - We need to find ways of showing people how they can be involved in the church and what the church is all about.

3. The three major strengths of the church that have contributed towards our achievements are:
 - 1). The people - The congregations are warm, welcoming, and adaptable. The Churchwardens are committed and hard working. The PCCs are effective and supportive.

 - 2). Adaptability – The church is committed to making services and pastoral care fit the needs of the parish and reflects the local character. For example, local farmers have been invited to Harvest Services. There is a recognised prominence in the community. Activities are well advertised in the community.

3). Relationships with our schools, preschools, and community groups. The church has worked hard to strengthen the links within the community. Many PCC members support and attend other non-church events. The villages are close-knit communities.

4a. The mission priorities for our Benefice that we will work on with our new Rector during the next five years are:

Growth – We need to continue to expand the congregations (attracting the ‘middle ground’). We need to articulate where this growth will come from and how we may tackle it. In particular we need to encourage younger people to church.

Stability - we need to look to build on the firm foundations that have been established over the past few years. We need to work together to consolidate what is good and to move forward to make strong choices for the future.

Creativity – we need to think of new ways of ‘being a church’. We need to look at local needs and look at how the church may be able to meet those needs. We need to ‘think outside the box’ and ensure the church reflects social change and trends (but while being true to our stable foundation). We may need to consider people, time, and methods of communication. How do we reach the ‘middle ground’, what are the barriers to the way they see the church and how can we overcome this? How can we support people in being part of the church in different ways and how can we show them what the church can do for them/is about/how they can be a part of the church?

Visibility – we need a Rector who can be a visible presence, and flexible to the Benefice needs, can collaborate and delegate tasks and who can offer longer-term commitment to help create stability.

Recognition – we need to recognise and encourage talents within the parish and learn to utilise these skills. The church needs to nurture the enthusiasm

and commitment of others to contribute to its long-term stability and growth.

4b. Our plans for achieving them include:

- a. Skills – our gifts, experience and knowledge – identifiable from individuals within the PCC
- b. Education and Training – we have strong links with the Diocesan Board of Education through our local Church of England Primary School
- c. Finance - New imaginative fund-raising in order to engage the local community
- d. Leadership – In addition to the Rector we need to look at our own PCCs and identify all skills and experiences which can be supported.
- e. Areas for Development:
 - Expertise in working with young people.
 - We intend to continue to develop existing good relations and maintain our ability to work together.
 - Administrative support for our new Incumbent. We have drawn up a comprehensive Job Description which identifies the duties and responsibilities that an administrator would require to assist our Incumbent.

Our Benefice Administrator would be responsible for:

- Office Management and General Administrative Services
- Parish Communications
- Administrative support for Worship
- Building maintenance and development

4c. The following offer challenges in achieving these priorities and how we hope to overcome them:

- Time, effort, money, resources, and commitment.

- Possible mission fatigue as individuals are only able to do so much.
- Promoting interest and communicating ideas to help our Churches grow. Some are reluctant to become involved or to assist with new ventures.
- For many people Church has no relevance in their daily lives apart from attendance at baptisms, weddings, and funerals.

In order to overcome these challenges, we must be aware of our strengths and skills and use them to help tackle our areas of weaknesses and vulnerabilities. In our plans we must acknowledge our personal, pastoral, and professional relationships and incorporate a willingness and capacity to draw on and develop the abilities of others in achieving our mission.

Our New Rector – Person Specification

To the potential candidates, we thank you for taking an interest in our beautiful Benefice of Lower Teesdale. The vacancy has arisen because our current incumbent retired early.

1. The specific role that our new priest will have in helping our churches or PCCs to achieve their mission priorities is:
 - To listen to the experience and expectations of the parishioners in order to understand more about the needs of the local area and about what has been successful/unsuccessful in the past.
 - To work with the PCCs to formulate and deliver the mission priorities
 - To explore innovative ways of working together
 - To engage with young people and schools
 - To help Churches re-energize and grow

- To follow the Green Environmental Mission of the Church
2. The specific skills and gifts that we expect our priest to have are:
- Ordained in the Church of England and of good standing
 - A people person, someone who is approachable and can engage with people of all ages
 - Experience of working with the younger generation including primary schools.
 - Flexibility to meet the unique needs of our rural community.
 - Well organised, able to multi-task and delegate.
 - A robust leader and communicator who maintains a strong profile within the community.
 - Good teaching skills
 - Clear vision, optimistic and realistic, together with a strong sense of mission
 - Naturally collaborative
 - Possession of a driving licence

3. He/she can help the PCCs prioritise our mission initiatives thus:

Through collaborative effort the PCC's will work together and with the new Rector in order to support them in their new role and to maintain our own mission priorities. Close working relations are especially important.

The PCC's are committed to meeting the challenges within the Lower Teesdale Benefice and hope that a new Rector will be able to both unite and support. It is hoped that the Rector will help merge the multiple needs by devising a thorough coverage of services and

pastoral care and will continue to build on the strong links forged between the church, the local schools, and communities.

3a. He/she can prioritise their own ministry thus:

The main initial feature will be to listen. The incoming Rector will need to trust the experience and knowledge of the PCC and Parishioners and understand the key concerns and histories of the parish. They need to meet with the PCC's and identify the range of experiences and skills that can be employed from within. They should then delegate some tasks and administration in order for them to immerse themselves in preaching, teaching, and pastoral ministry.

3b. We will support our new Rector in their ministry:

By offering our complete support. We can help by listening, talking, and offering practical assistance and friendship where and whenever needed.

With prayer and open, positive interaction and dialogue. The church and community would welcome the opportunity to be involved.

Green Environmental Mission

We believe that responding to the climate crisis is an essential part of our responsibility to safeguard God's creation and achieve a just world. Climate change hits hardest the poorest countries and poorest people of the world. Meantime, the widespread destruction of the natural world is a crisis for creation.

Our Environment Programme exists to enable the whole Church to address this — in faith, practice and mission. This includes tackling our own carbon emissions (aiming for Net Zero Carbon by 2030) and our wider work.

The Rectory – Ashbourne House Cotherstone

The Rectory is well located within the Village of Cotherstone allowing ease of access to the whole Benefice of Lower Teesdale.

Ashbourne House was previously the residence of The Rt Revd David Jenkins, Bishop of Durham.

On the Ground Floor it has a Study, Lounge, Dining Room, Kitchen, Utility Room and Cloakroom/WC. Upstairs are four bedrooms with one ensuite plus a separate bathroom. The Vicarage is double glazed throughout and benefits from gas central heating

There is a detached double garage adjoining the property and easily managed gardens to the front and rear of the property.





Ashbourne House Cotherstone

Parish Officers 2025

PARISH	CHURCHWARDEN	SECRETARY	TREASURER	LAY CHAIR	READER
BOWES	Andrew Bracewell Peter Nicholls	Peter Nicholls	Peter Nicholls	Andrew Bracewell	Vacant
STARTFORTH WITH BRIGNALL	Andrea Clarke	Sue Stevens	Sue Brooks	Colin Clarke	George Alderson (Brignall)
ROMALDKIRK AND COTHERSTONE	Carol Lynn	Vacant	Aidan Borer	Vacant	Vacant
LAITHKIRK	Margaret Walton	Penny Sunderland	Roger Sunderland	Penny Sunderland	Penny Sunderland

BENEFICE OF LOWER TEESDALE

A. PARISH INFORMATION

SUBJECT	BOWES	BRIGNALL	COTHERSTONE	LAITHKIRK	ROMALDKIRK	STARTFORTH	TOTALS
Classification	Rural						
Population	472	150	485	450	140	2518	4215
Trend	Stable	Reducing	Stable	Stable	Stable	Increasing	
Distribution	Dispersed	Even	Even	Dispersed	Even	Dispersed	
Housing:							
Owner Occupied	70%	Included with Startforth	70%	65%	70%	85%	
Housing Assoc	10%		10%	10%		10%	
Local Authority	10%		15%			-	
Private rented	10%		10%			5%	
Detached	52%		41%	50%	41%	35%	
Semi	17%		47%	25%	47%	40%	
Terrace	26%		10%	25%	10%	25%	
Flats	4%						
Others	1%						
Ethnic Minorities	<0.5%						
Age Groups:							
0-4	23			Varied – No breakdown given		152	
5-15	59					100	
16-24	44	10				484	
25-44	135	15				400	

45-64	150	30	50+ = 50%		50+ = 50%	484
65-74	36	30				230
75+	25	15				150
Where do people work:	Barnard Castle and surrounding area, Middlesbrough, Newcastle, Catterick, Durham, Bishop Auckland, Darlington, Upper Teesdale.					
What kind of jobs:	Agriculture, Tourism, Service Sector, National Health Service, Glaxo Smith Kline (pharmaceutical industry), Auction Mart, Civil Service; Home Office, NHS, Education and Defence. Home Working is now a significant factor.					
Unemployment Levels	Less than 2% unemployment. Significant numbers of retired people across the Benefice.					
Hospitals, Hospices, Retirement Homes	None within benefice but Parishioners will be found in Barnard Castle which has several retirement and warden-controlled homes. The main hospital facility is the Richardson Community Hospital (No Accident & Emergency (A&E) facility). The nearest A&E is at Darlington Memorial Hospital.					
Incumbent involvement	Pastoral care and visiting parishioners and administering Holy Communion					
Schools	Two Primary Schools and three Preschools: Bowes Hutchinson's Church of England (Aided) Primary School, and Cotherstone Primary School (Bowes Cotherstone Federation). Kirkland's Nursery and a Community Centre occupy the former school building in Startforth. The Community Centre is occupied by 12 different groups. The Rector and Churchwarden are Trustees of the Building. There is Community involvement with a monthly coffee morning, book sale and family fun night.					
Incumbent involvement Lay involvement	Collective Worship, Special Services (Christmas, Mothering Sunday, Easter, Ascension Day, Leavers Service, Harvest). Bowes Cotherstone Federation (BCF) Governing Board for both Primary Schools. Bowes Trustees for school and associated land and buildings. Startforth Morrith Memorial School Trustees for the School Cottage Trust fund are in discussion with the Diocese, Department for Education (DFE) and Durham County Council (DCC) following publication of an S554 document. The PCC also supplies the oranges for the Christingles and Flowers for Children to give to their mothers following the Mothering Sunday service. Penny Sunderland takes Services and leads Collective Worship in both schools.					
Other Institutions	Bowes Village Hall, Bowes WI, Bowes Club. Bowes FC are a successful amateur football club but play in Barnard Castle. Startforth Community Association. Reading Rooms (Romaldkirk) Mickleton Village Hall, Community Association and Management Committee. Cotherstone thriving Village Hall and Lunch Club. There is also an Old Chapel Café and Shop within the village.					
Other Faith Communities	None					

B. THE CHRISTIAN COMMUNITY

SUBJECT	ST GILES BOWES	ST MARY'S BRIGNALL	ST CUTHBERT COTHERSTONE	LAITHKIRK PARISH CHURCH	ST ROMALD ROMALDKIRK	HOLY TRINITY STARTFORTH	TOTALS
Number on Church Electoral Roll	36	11	34	7	Figures combined with Cotherstone	38	126
Increasing/Decreasing/Stable	Stable	Stable	Stable	Stable		Stable	
% From Outside Parish	21%	5%	4%	25%		5%	
Significant Age Group	0-11 70+	50+	50+	60-85		50+	
Statistics from last Annual Return							
Average Sunday attendance	13	8	22	11		15	69
Christmas Communicants	18	0	63	29		32	142
Easter Communicants	27	11	43	11		26	118
Baptisms Adult	0	0	0	0		0	0
Baptisms Infant	5	1	2	1		3	12
Confirmations Adult	0	0	0	0		0	0
Confirmations Under 16 yrs.	0	0	0	0		0	0
Weddings	0	1	3	1		3	8
Funerals in Church	3	1	1	1		4	10
Funerals in Crematorium or Cemetery	0	0	2	0		0	2
Licensed Readers	0	0	0	1	0	1	
Sunday School, children, and young people	-	-		-		Funky Church	

Cleaning/Caretaking	Cleaning rota, Flower rota and Sides persons
Ordained Ministry	NIL
Number of Stipendiary Clergy	NIL
Non-Stipendiary Clergy	
Retired Clergy	3 who assist across the Benefice each month
Resolutions A,B or C passed	No
Training for Reader or Ordained Min.	Nil
Other Christian Churches in the Parish	None
Links with neighbouring Parishes	Churches Together in Barnard Castle. We have a weekly Benefice Service in one Church within the Benefice on a published rota basis
Parish Magazine or Newsletter	Startforth bi-monthly newsletter 600 delivered. Benefice Rota produced quarterly and distributed widely within the Benefice
Sunday Service Sheet	Bowes 25 printed plus 12 Bibles for congregation use, Startforth 25 printed, Brignall 5 printed. Romalldkirk and Cotherstone 40 printed.
Mid-week activities	Events: Morris Dancers, Concerts and Fair Stalls (Romalldkirk), Artists Exhibition (Cotherstone) take place in the churches.
Taking care policy adopted	2003
Safeguarding - Child Protection Officer	Appointed at each APCM. Currently Mrs Penny Sunderland for the Benefice.
Bible Study/Prayer Group	Annual Lent Group in the home of local Parishioners across Benefice.
Lay involvement in Deanery & Diocese	Representation on Deanery and Diocesan Synods plus Diocesan Readers' Association. Mr Peter Nicholls is Deanery Lay Chair in Richmond.

C. THE CHURCH'S WORSHIP

SUBJECT	ST GILES BOWES	ST MARY'S BRIGNALL	ST CUTHBERT COTHERSTONE	LAITHKIRK PARISH CHURCH	ST ROMALD ROMALDKIRK	HOLY TRINITY STARTFORTH
Type of Service: Monthly services Holy Communion (HC), Morning Prayer (MP), Evening Prayer (EP), Family Service (FS), Evening Service (ES), Funky Church (FC) Service patterns apply for the last five years.	1 x HC 1 x MP Tuesday	2 x EP	1 x HC	1 x HC	1 x HC	1 x HC 1 x FC
Rite used: BCP, Common Worship (CW)	BCP & CW					
Average Attendance Adults/Children	13	7	15	17	Range 12-25	15
Church Tradition						
Worship & Theological tradition	Valuing Tradition, open minded, forward looking					
Vestments	Cassock, Alb and Stole					
Is the Sacrament reserved	No					
Special features in the Worship	Occasional Singing Group at Romalldkirk.					
Date of last review by PCC	All services reviewed on a quarterly basis by the Churchwardens					
Policy for Baptisms	Open policy with preparation					
Policy for Weddings	Open policy					
Policy for marriage and divorced people	The PCC passed an agreement that the decision would be at the discretion of the Incumbent. The general understanding is that remarriages can be granted as long as neither party was the cause of the original marriage breakdown.					
Policy for Communion before Confirmation	None					
Music, is there a Choir	No but a Singing Group which meets at Romalldkirk on a Saturday					
Is there a music group	No					

Is there an Organist/Director of Music	We have one Organist who plays at each weekly service across the Benefice and a second organist who plays in the evenings at Bowes. Startforth has an Organist who plays at the Funky Church Worship monthly.
What hymn books are regularly used	Bowes, Startforth, Brignall, Cotherstone and Romaldekirk Hymns Old and New; Laithkirk Ancient and Modern Revised 100 Hymns for Today.

D. BUILDINGS AND PROPERTIES

SUBJECT	ST GILES BOWES	ST MARY'S BRIGNALL	ST CUTHBERT COTHERSTONE	LAITHKIRK PARISH CHURCH	ST ROMALD ROMALDKIRK	HOLY TRINITY STARTFORTH
Year the Church was built	Norman features	1833	Circa 19 th C	1577	Circa 13 th C	1863
Grade of Church	II	II	-	II	I	II
Seating Capacity	150	70	100	80	160	160
Date of last Quinquennial	2023	2012	2010	2023	2010	2012
Work carried out since last inspection	<p>Bowes: Gutters cleaned, Clock and Organ serviced, Fire extinguishers inspected, substantial roof repairs to nave and chancel including ridge and water tables and boiler house, back path for disabled access completed, notice boards installed in NW corner of nave, two memorial plaques erected, East and South walls repainted due to signs of damp. Re-decoration of Church, pointing of roof and walls.</p> <p>Startforth: Steeple repairs completed, Bell Tower cleared and guards on vents to stop bird access. Kitchen facility and disabled toilet now available. Flood lights used during winter months.</p> <p>Laithkirk: Interior redecorated. All windows repaired and refurbished. All external gutters and gates repainted. Hearse House windows replaced.</p> <p>Cotherstone and Romaldekirk: re-decoration, removal of shrubs, repointing of external stonework, clock repairs. Romaldekirk has a toilet and Kitchenette.</p>					
Outstanding problems relating to Building	<p>Bowes: West window requires restoration. New boiler required. No toilet facilities.</p> <p>Laithkirk: no running water or toilet facilities.</p> <p>Brignall: No toilet facilities</p>					
Church Halls/Meeting rooms managed by the PCC	<p>Bowes: The Church owns and leases a field for agricultural use. The PCC hold their meetings in the Church.</p> <p>Laithkirk: Hearse House</p>					

Houses owned by PCC	None					
Facilities	SS, DA	SS,DA	SS,DA	SS,DA	WC, K, SS, DA	WC, K, SS, DA
Churchyards	St Giles	Brignall	St Cuthbert	Laithkirk	St Romald's	Startforth
Open or closed	Closed	Open	Closed	Closed	Closed	Closed
If closed who is responsible for maintenance	Durham County Council					
Is maintenance effective	Yes					

Facilities Code:
WC - Toilet
K - Kitchen
SS - Speaker System
DA – Access for All

E. FINANCE AND ADMINISTRATION – FIGURES AS AT 2023/2024

SUBJECT	ST GILES BOWES	ST MARY'S BRIGNALL	ST CUTHBERT COTHERSTONE	LAITHKIRK PARISH CHURCH	ST ROMALD ROMALDKIRK	HOLY TRINITY STARTFORTH
	£	£	£	£	£	£
Annual Income last financial year	43,898.38	1250.14	Combined with Romaldkirk	9290.95	22,672.33	10939.37
Annual income previous financial year	16,418.04	4006.16		6646.48	23,686.41	15000.00
Annual Expenditure last financial year	46,421.83	3105.00		8562.43	52,843.00	12009.95
Annual expenditure previous financial year	14,144.57	3634.07		6044.14	32,029.41	
Total reserves at the end of last financial year	67,482.66 Invest assets	Startforth		29,500.00	176,825.0	37000.30
Sources of Income last year						
Gift Aided Giving	1380.00	688.00	Combined with Romaldkirk	3329.00	4206.80	5181.00
Tax recovered from Gift Aid	1398.98	449.87		735.00	3089.75	2379.59
Other pledged giving				0	1178.95	
Open plate Offertories and Donations	1163.02	75.00		1645.00	3711.30	1103.55
Income from investments	416.06	11.14		928.00	3330.63	1014.45
Fee Income	194.00	27.00		911.00	4607.90	990.40
General Fundraising efforts	1797.40			2022.00	2547.00	62.65
Fundraising efforts for special purposes						
Administration of Finance						
Do you have a Gift Aid Administrator	Treasurer	No		Treasurer	Yes	Treasurer
Date of last Christian Giving Review		-		-		
Do you have a person to promote Stewardship	No	No		No	No	No
Do you prepare an annual budget	No	No		No	No	No
What proportion of ordinary income is budgeted to charity/mission outside of the parish	Nil	Nil		Nil	10%	15%
Parish Share						
How much is you parish Share allocation	6859.00	2445.00	Combined with Romaldkirk	5499.00	13,080.00	12,000.00
Is this paid; monthly/quarterly/monthly/annually /irregularly	Irregularly	Monthly		Irregularly	Monthly	Monthly
If you parish Share was not paid in full how much was the deficit		Nil		Paid in full	Nil	Nil

Do you have historic share debt, if so, how much				No deficit	No deficit	
Amount of expenses paid to Clergy last year	£54	NIL		£27	NIL	NIL
Does this cover full reimbursement of expenses (normally yes)	Yes	Yes		Yes	Yes	Yes
Are monthly expenses submitted by clergy	NB: No expenses have been payable to the Incumbent since 2023 Normally paid monthly in full.					
What secretarial administrative assistance is provided	We have produced a Job Description for Administrative support and it is our hope to arrange this vital support for our new incumbent.					
Does the Parish carry any outstanding loan commitments	No	No	No	No	No	No

Conclusion

We hope after reading this brochure you find God's calling to invite you to make a difference as Rector of our wonderful Benefice of Lower Teesdale.

Signed: *Peter Nicholls*

Name: P D NICHOLLS

Date: 4 March 2025

PCC statement for the Benefice of Lower Teesdale v3

