

Vacancy for a New
PRIEST-IN-CHARGE

for the Esk Parishes with
Rockcliffe and Blackford



General Introduction to Our Area

The Esk Parishes with Rockcliffe and Blackford is a proposed new grouping within the thirty-one churches of the Brampton Deanery.



Flowers by the M6

The Esk Parishes Benefice is made up of Arthuret, Kirkandrews-on-Esk and Nicholforest churches. The churches of Rockcliffe and Blackford are a separate benefice. The five churches have their own distinct identities, which adds to the richness of worship. We are used to working cooperatively and regularly share services. We recommend that you view our individual parish profiles alongside this document.

The parishes are located in Cumbria near the Scottish border in the 'Debatable Lands', north of [Hadrian's Wall](#). The busy market town of Longtown is the largest in our area.

Carlisle is the nearest city, and is well served by rail and bus networks. The parishes are within easy reach of the M6 and the M74.

We Would

Like To :

- ◇ Disciple the whole church and encourage and facilitate every member ministry as a necessary step to further outreach and church growth.
- ◇ Grow socially connected and supportive church communities and further develop pastoral visiting.
- ◇ Consolidate and develop local initiatives and identify new ones.
- ◇ Continue to develop community outreach by connecting with organisations, including schools, developing programmes and hosting events.
- ◇ Identify and expedite improvements in our church buildings.



Coronation celebrations
at Nicholforest Hall

‘We are looking for’ a Priest who :



St Mary the Virgin,
Rockcliffe and Cargo

- ◇ Is a person of prayer who seeks to be led by God but who will test their discernment with others.
- ◇ Recognises local tradition and the opportunities it presents, while being alert to new opportunities for working collaboratively with the churches, in fulfilling God’s purpose for them.
- ◇ Is someone with good interpersonal skills across a wide social spectrum.
- ◇ Relishes the opportunities and challenges offered by a mix of rural, market town ministry and newer urban developments.
- ◇ Is happy to use different liturgies of the church, in particular the Book of Common Prayer and Common Worship
- ◇ Will divide their time equitably to balance the needs of the parishes.
- ◇ Is able to discern and develop the gifts of their flock in conjunction with the parishes.
- ◇ Has the ability to recognise the need for pastoral care within the community and is committed to encouraging all age groups to recognise the relevance of Christianity in their everyday lives

All our Parishes :

- ◇ Consider the remarriage of divorcees, and baptism for all.
- ◇ Do not regard age as a barrier to ministry.
- ◇ Have a middle of the road Anglican churchmanship.
- ◇ Have church buildings that are listed, historical, and have pipe organs used in Worship.
- ◇ Offer Home Communion and Home Prayer to those unable to attend.



Kirkandrews-on Esk

Within our five churches we have :

- ◇ A ministry team, currently of four authorised lay ministers, including one who is training for licensed ministry as a Reader, a very experienced Reader licensed to take funerals and communion by extension, two retired Ordained Ministers with permission to officiate, and an Anna Chaplain. Readings, welcoming and other such offices are carried out by members of the congregations.
- ◇ Three primary schools which have strong links with the churches, two of which are church schools.
- ◇ Popular Annual Lent lectures attended by all denominations from the wider area.
- ◇ Ecumenical Bible study groups that meet throughout the year.
- ◇ A Network Youth Church initiative.
- ◇ Monthly services of choral evensong at Kirkandrews and of full family worship at both Rockcliffe and Blackford.
- ◇ The three Esk churches which are members of Save the Parish.



Near the Esk,
in Kirkandrews parish

Summary of church statistics and current service patterns :

Churches and numbers	Electoral Roll	Annual baptisms	Annual weddings	Annual funerals
Arthuret	122	20	5	20-30
Blackford	25	5	1	7
Kirkandrews	52	1	1	2
Nicholforest	52	3	1	3
Rockcliffe	33	7	2	5

Pattern of services	Arthuret	Kirkandrews	Nicholforest	Rockcliffe	Blackford
1 st Sunday	10.30 am CW (HC)	6 pm BCP	11 am BCP (HC)	9.30 CW (HC)	11.00 CW (HC)
2 nd Sunday	10.30 am CW (HC)	11 am BCP	11 am BCP	9.30 CW (HC)	11.00 CW (HC)
3 rd Sunday	10.30 am CW (HC)	6 pm BCP	4 pm BCP	9.30 CW (HC)	11.00 (Family service)
4 th Sunday	9.00 am BCP (HC) 10.30 am CW (Morning worship)	11 am BCP combined service (HC)		11.00 Family Service	10.00 CW (HC)
(5 th Sunday)	Joint benefice revolves between churches			Joint benefice	

Schools and Young People in the Area, Including Secondary Schools :

- ◇ A Network Youth Church runs in Longtown and is staffed by people from a number of denominations.
- ◇ Weekly worship at Blackford and Rockcliffe schools was, until January, led by the Priest in Charge at Blackford and Rockcliffe, before his retirement.
- ◇ There is a wide choice of secondary schools, three of which are included below

School	Location	Level/Age range	Number on Roll
Longtown Primary	Longtown	3-11 years	213
Rockcliffe CE. School (Voluntary Controlled)	Rockcliffe	3-11 years	140
Blackford CE Primary School (Voluntary Aided)	Blackford	3-11 years	55
William Howard	Brampton	11-18	1333
Trinity CE Academy	Carlisle	11-18	c. 1682*
Richard Rose Academy	Carlisle	11-18	1026

* 2018 figures

The Rectory :

The [Rectory](#), on Arthuret Drive, Longtown, is a modern detached building situated on the end of a quiet cul-de-sac, beside the road up to Arthuret Church. It is within easy walking distance of local shopping facilities; school; bus links; Arthuret Church; Longtown Community Centre and more.

The Rectory offers level access into a welcoming reception area, from which we enter the spacious study, with double aspect windows offering views over fields and hedges. An accessible toilet is handy for visitors. Another door leads to the more private living area, with a sizeable Sitting Room, large Dining Room and well fitted Kitchen (and Utility Room), each opening directly from the hall.



At Nicholforest Lamb Service

Access to a charming conservatory is through the sitting room. Beyond it lies a reasonably sized, manageable and private garden. Upstairs are four bedrooms and a bathroom and shower room.

The double garage comes with plentiful additional parking in the forecourt and more parking is available in the lay-by opposite the house.

Finance :

Finances are sound and the churches pay their parish share.

Funds are raised through regular offerings, occasional offices and a significant number and variety of fund raising events.

	Parish Offer 2024-5	Population of Parish	Number on Electoral roll	Usual attendance	Maximum attendance
Arthuret	£35,000	2439	122	30	100-150
Kirkandrews	£12,480	458	52	28	108-133
Nicholforest	£6,000	370	52	9 to 33	66-72
Rockcliffe	£9,000	1700	33	14	62
Blackford	£6,900	560	25	14	57

Usual Attendance at Special Services :

	Ash Wednes- day	Maundy Thursday	Good Friday	Easter Sunday	Christingle	Carol service	*Crib service	Midnight Mass	Christmas day	School Services	Harvest Festival	Remem- brance Day	All Souls Day	*Lamb Service	Blessing of the river*
Arthuret	19-22	19-23		51-55 150 ⁵	100-120	90-100		37-45	25	260-280 ¹ 290 ² 300 ⁷	45-50	60-65	120- 150		
Kirkandrews ⁶			27-30	35-57		102- 108		38-47			37-43	34-39			46
Nicholforest	19			17	56	68		18			28	28		72	
Rockcliffe			9	33	140**	158**	74	33		172 ¹ 152 ² 148 ³	18	38	56		
Blackford	13			30		57 92**				58 ¹ 96 ² 81 ⁴					

* Service unique to a single church.

** School services during advent

¹ School leavers service

² School Harvest service

³ School Easter service

⁴ School Nativity

⁵ Egg rolling service on Easter afternoon

⁷ School Carol service

⁸ School Christingle service

⁶ Kirkandrews church also holds a monthly service of choral evensong, which has an attendance of between 43 and 52.

Images from the Parishes

Priest-in-Charge



St Michael and All Angels, Arthuret



St John the Baptist, Blackford



St Andrew, Kirkandrews-on-Esk



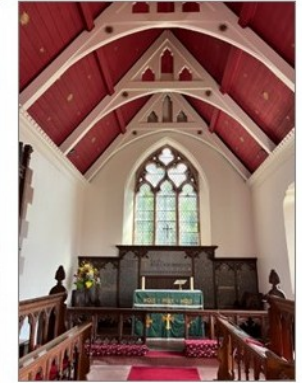
St Nicholas, Nicholforest



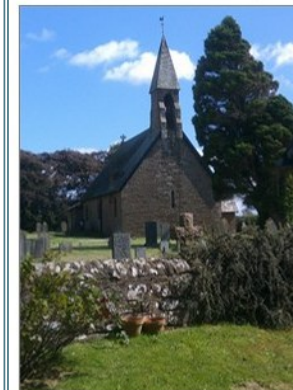
St Mary the Virgin, Rockcliffe with Cargo



Arthuret interior and churchyard



Blackford Church and School





The suspension bridge and the River Esk at Kirkandrews church.



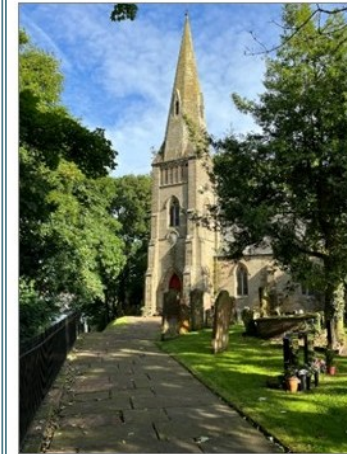
Interior views during special events



Nicholforest church and interior



View from Nicholforest village hall



Rockcliffe with Cargo, Church and School



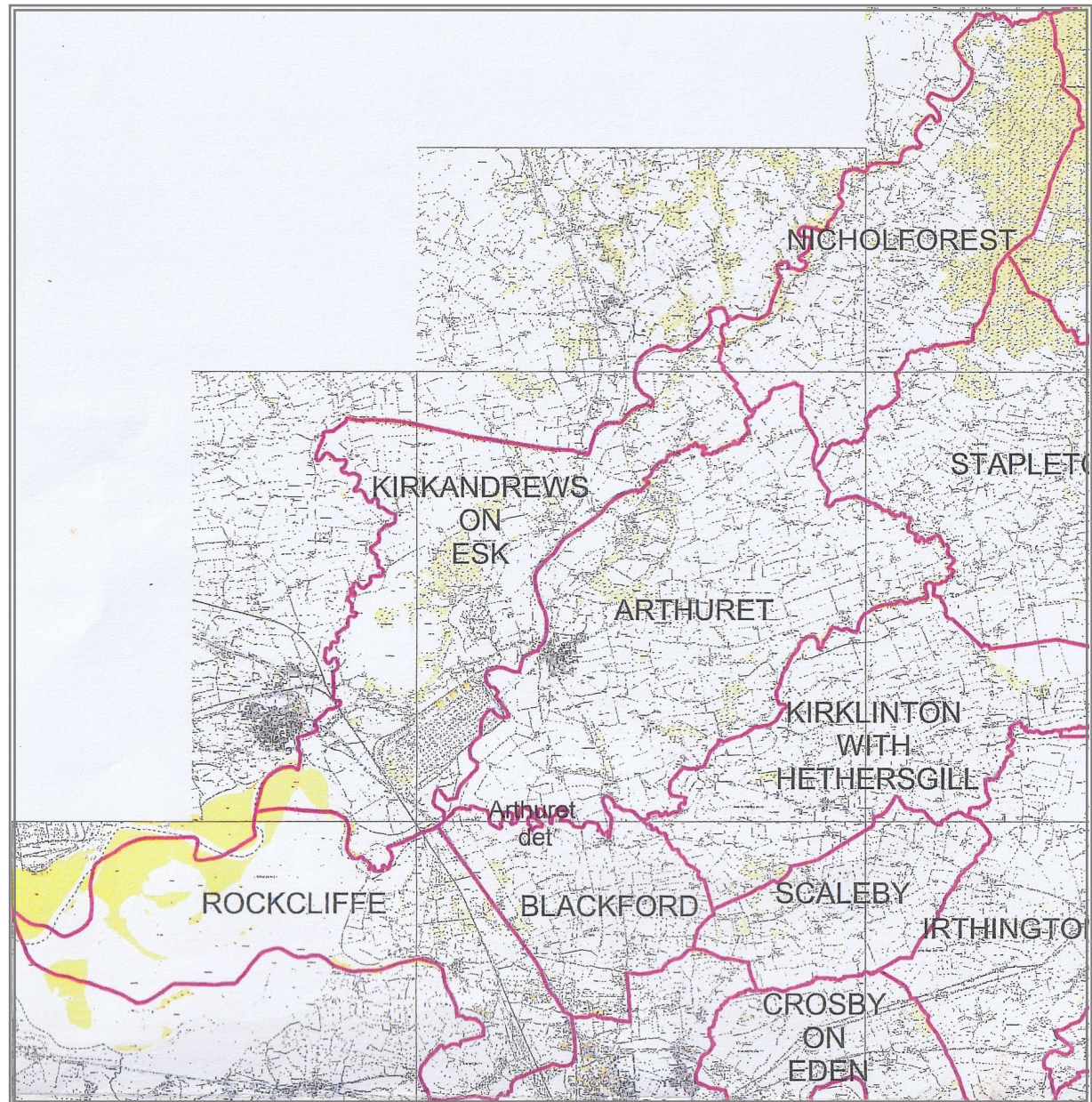
View of the river Eden & Castletown



Map of the Parishes, Showing Neighbouring Parishes :



Curlew by the river Esk, between
Kirkandrews-on-Esk and Rockcliffe



Front cover : Rockcliffe Marsh and the lower reaches of the Esk, seen from the England Coastal Footpath, in Kirkandrews on Esk

Back cover : Melvyn Redgers (Reader for the Esk Parishes) and Rev Rachel Williams (former Methodist minister) Dedicating the Tommy, outside Longtown Memorial Hall Community Centre, at the Arthuret Road/A7 junction

Photographs provided by residents of Rockcliffe, Blackford and the Esk Parishes

