

Bierton & Hulcott Parish Profile



Foreword from the Archdeacon



St James, Berton is an ancient parish church with a faithful and inclusive congregation and wonderful opportunities for growth. The parish is situated on the northern edge of the fast-growing town of Aylesbury and is increasingly surrounded by new developments. The church building is very visible, being on the main A418 from Aylesbury to Leighton Buzzard, which could be a significant asset for mission. The congregation is central and open in worshipping style and theology which complements and contrasts the approach of neighbouring parishes which tend to be more evangelical.

There has been some growth in recent years, especially among young families, through the “Praise For All” service, and this could be built on by a priest who is gifted in this aspect of ministry. There is also strong lay leadership at St James and a committed congregation which is active in many ways.

This is a house for duty role. This is a significant change in the life of the parish, but boundary changes are in hand and agreed by the Deanery and Archdeaconry Mission and Pastoral Committee which mean that the large estates of Buckingham Park and Watermead which are geographically remote from the Parish Church, will no longer be the responsibility of the Vicar and PCC for Berton.

A priest who is comfortable with both the traditional worship of the weekly Eucharist, who is open to leading creative and informal worship for an emerging congregation and at home in an area of housing growth will enjoy the opportunities offered by this role.

The new Vicar will be committed to the diocesan vision of becoming *a more Christ-like Church for the sake of God’s World - contemplative, compassionate and courageous* - and to model and enable a flourishing ministry, for all, in line with the diocesan work in this area.

I commend this profile to you and I would welcome conversations about the role with interested candidates.

Ven Guy Elsmore,
Archdeacon of Buckingham
archdeacon.buckingham@oxford.anglican.org

Our Mission Statement

“Enriching Lives through Sharing Christ”

- † Engaging with our local community to expand the Kingdom of God here in Bierton and Hulcott.
- † Reaching out into the heart of our Parish, and welcoming people into our church family, particularly as many of our village activities have ceased.
- † Growing in faith and fellowship together and taking our church to the people.

How we see our Future

† Our Parish is committed to growth and offers huge potential. We are praying for the right person to join us as we seek to further God's kingdom.

† We want to continue to be outward looking and to constantly seek new ways in which we can serve God by better serving our communities.

† We would like to grow, not just in numbers, but also in our spiritual maturity bringing us all into a closer relationship with God.

Therefore encourage one another and build up each other,
as indeed you are doing
1 Thessalonians 5:11

The person we seek

- † An experienced Parish Priest who has a clear and deeply rooted faith, secure in both their spiritual and personal life, with the ability to nurture discipleship.
- † Someone comfortable with a variety of worship - traditional and modern, formal and informal.
- † A person of prayer, guided by God, who has a particular interest in helping us build upon our existing links with children, families, our church school and our local youth groups such as Scouts, Cubs and Beavers.
- † A person with humility, who is also caring and compassionate, and able to demonstrate God's love for all in their actions.
- † A person with excellent communication skills, who can inspire our active church family and encourage new involvement in the life of the church and its activities in the parish, recognising all the various gifts people have to offer while valuing people of all generations, sexualities and social standings.
- † Someone with an enthusiastic, warm personality to be a visible presence in our parish, able to engage with both worshipping and non-worshipping parishioners.
- † We need a team player who is well organised with IT skills. The person must have proven time management skills and the ability to successfully prioritise their workload.
- † Someone in possession of a valid driving licence and use of their own vehicle.
- † A good sense of humour would be an asset.

Vicar

House For Duty

2 days per week
+ Sundays

One the object of our journey,
one the faith which never tires,
one the earnest looking forward,
one the hope our God inspires.

We can offer

- † An inclusive church family dedicated to honouring God through our worship, actions, service and fellowship.
- † A prayerful, supportive and friendly church fellowship.
- † A PCC who have diligently maintained church life during our extended period of Vacancy.
- † An openness to new ideas that will help us further God's kingdom.
- † A desire to grow as a church for the glory of God.
- † A willingness to help, be guided and encouraged to participate.
- † A comfortable 4-bedroom vicarage, situated next to the church in a semi-rural setting.
- † Accessible links to local transport including a direct train line to London.
- † A very warm and open welcome to whomever God sends us to be our next Parish Priest.

Our Church

St James the Great Church, Aylesbury Road, Bierton, Bucks HP22 5BT

St James the Great Church has a welcoming and friendly congregation. We are fortunate to have a regular Serving Team, an Organist and a Bell Ringing Team.

We are central anglican in worshipping style. Our main Sunday services consist of a 9.00 am service with robes and sung liturgy, followed by a 10.30 am more contemporary family orientated service.

Our Parish consists of Bierton, Hulcott, The Coppice, Bierton Park, Oldhams Meadow, Elmhurst (north side of the Aylesbury Ring Road).

Due to Pastoral re-organisation, the areas of Buckingham Park and Watermead will be transferred to another Benefice.

Activities organised by our church, aside from our regular services are many and varied, including Wednesday Welcome, Cream Teas, Film Nights, Teddies from the Tower, Rambles, Barbecues, Barn Dances, Summer Fetes and Christmas Fairs.

Many of our congregation live outside the parish in neighbouring residential areas.



Our Church

We are privileged to have such a beautiful building.

The church is thought to date back to 14th century.

In the 15th/16th centuries, the walls of the north and south aisles were raised and extra windows added. The present roof and the stained glass windows are 19th century.

The church has 7 bells.

The Nave is a versatile space, so that as well as worship, it can be used for many other large parish events.

To help ensure the building is fit for the future, having raised some funds, we are working with an architect to draw up plans to make the North Transept area a smaller separate space for Sunday School, Prayer Groups, Bible Study and Meetings.



Our Outreach

We have a C of E Primary School (Voluntary Controlled) in the parish, which clergy and laity visit regularly to lead Collective Worship.

The children regularly visit the church to participate in Messy Church activities.

Our incumbent serves on the Board of School Governors.

We have a Nursing Home in our Parish, which clergy and laity visit regularly offering Holy Communion and Pastoral support to the residents.

Pastoral support and Home Communion is provided by the clergy and laity, to those who are housebound, sick or unable to attend church in person.

Our Wednesday Welcome afternoon is held in church every week and offers fellowship and refreshments in beautiful surroundings. It is a lifeline for many who live on their own and may not otherwise see anyone for days. It is great to see all generations, male and female, worshippers and non-worshippers getting together over a cuppa.



Life at St James the Great

During the Year, We

Knit Blankets for the Neonatal Unit
at Stoke Mandeville Hospital

Enjoy a Pot of Tea

Parachute Teddies from the Tower

Grow Sunflowers

Make Scarecrows

Eat Pancakes while doing a Quiz
(yes, we can do more than one thing at a time)
and sometimes we're a bit Messy Church



Life at St James the Great

We're an active group

We Barn Dance

We're Dramatic

We Sing

and we Doris Dance!

And whatever you do, in word or deed, do everything in the name of the Lord Jesus, giving thanks to God the Father through him

Colossians 3:17



Overseas Outreach

Home of Happiness

We directly support this Orphanage for disabled children in Lusaka, Zambia, as a former member of our congregation can be our link with them.

The Home of Happiness was established a few years ago by Mother Bernadette as a home for disabled children, such places are very rare.

There is no state support for the poor in Zambia. Orphanages such as the Home of Happiness are funded purely from donations and staffed by volunteers. Poverty in Zambia can be desperate, but if you are poor with a disability then you are at the very bottom of society. Mother Bernadette, who herself has a club foot, started to take in disabled children. Some of the children were orphaned, but others came from families who could not cope with their child's disabilities or found they had to choose who to feed. Very soon, this turned into a steady stream. Sometimes infants were left on her doorstep during the night, or brought by desperate, tearful parents who had to make the gut-wrenching decision to give up their child.

In subsequent years, our donations have helped to provide toys and teaching materials. This year we have helped fund blankets for every child and enough charcoal to see them through the winter for heating and cooking needs. The latter has become invaluable, particularly in light of daily power cuts of 21 hours.

Mother Bernadette is dedicated to doing God's work and she is so grateful for any financial help provided by the Church Family at St James.

She ensures that the children are happy and feel valued. Something, unfortunately, their parents nor the state seem able to do.





We support many Charities



† Home of Happiness Orphanage, Lusaka, Zambia.

† Aylesbury Food Bank

† Carol Singing - Florence Nightingale Hospice at Stoke Mandeville Hospital

† Used Postage Stamps for RNIB and Scannappeal at Stoke Mandeville Hospital

† Christingle Services and Home Collection boxes for The Children's Society

† Macmillan Cancer - Biggest Coffee Morning

Worship at St James the Great

9:00 am	Sung Eucharist (Common Worship) (Average Attendance 36 Adults & 2 Children)	Every Sunday
10:30 am	Praise For All (Contemporary Worship) (Average Attendance 10 Adults & 12 Children)	1 st & 3 rd Sundays (School Term Time) (Looking to be reinstated to Every Sunday, once we have a new incumbent)
6:00 pm	Evensong (Book of Common Prayer)	Once a Month (Looking to be reinstated once we have a new incumbent)

Holy Days and Feast Days are as announced in our Weekly Notices Sheet

The Readings for our Services follow the Common Worship Lectionary

Regular Activities at St James the Great

Tuesdays Bible Study (Once a month)

Wednesdays Wednesday Welcome

Thursdays Bierton Allsorts (Entertainment Group)

Fridays Bell Ringing Practice

Saturdays Coffee, Tea & Cakes Morning and 100 Club Draw (Once a month)

Messy Church held on various dates throughout the year

Benefice Summary

† Electoral Roll - 49

† Average Sunday Attendance - 55

† Parish Share 2024 - £24,462 (Always Paid in Full)

† Supporting Structures:

Area Bishop: Vacant

Archdeacon: The Ven Guy Elsmore, Archdeacon of Buckingham

Area Dean: Revd Jonathan Hawkins, Aylesbury Deanery

Our Surroundings

Bierton lies in the Vale of Aylesbury, to the north-east of Aylesbury town. It is primarily residential with a wide social mix. Housing is mixed, with older traditional properties, former council houses, flats, and new developments. The latest estimate of the population of the current parish is 10,500 (2021). Pastoral Re-organisation will reduce this by approximately half.

The village boasts a community hall, a sports pavilion, a playground, allotments and an Indian Restaurant. There are active Beaver, Cub and Scout groups. Nearby there is also a Golf Driving Range with Restaurant and a Tesco Express.

Bierton Crematorium is in the Parish.

Poplar Grove GP Surgery and Rowlands Pharmacy are located in our Parish. The nearest NHS hospital is in Stoke Mandeville.

In nearby Aylesbury there are three grammar schools and two secondary schools.

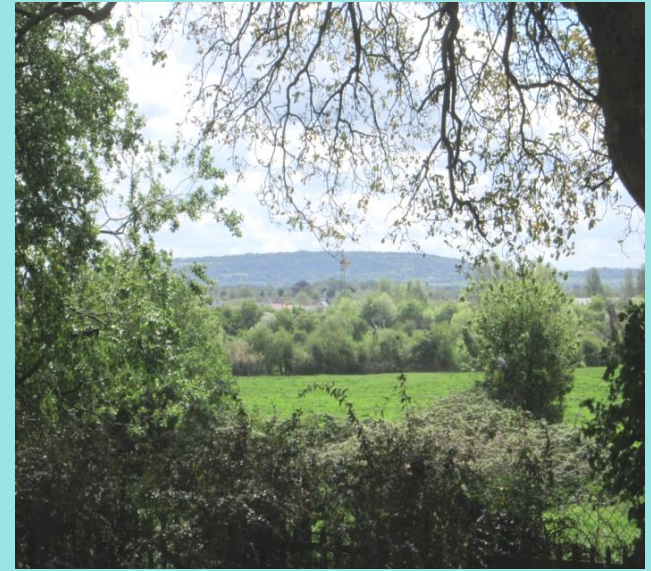
There is a bus service to Aylesbury and to Milton Keynes.

In Aylesbury there is a mainline railway station with direct access to London. Aylesbury has an abundance of places to eat and shop. Larger shopping areas are located in Watford and Milton Keynes. There are other amenities in the surrounding area including a theatre, cinema, museums, bowling alley, go-kart track, swimming pool, tennis courts, leisure centres and golf courses.



The Vicarage

- There is a modern four bedroomed vicarage with garage and additional parking
- It is adjacent to the church and at the end of a small cul-de-sac
- Ground Floor: dining room; lounge with open fireplace and patio doors; study; kitchen; toilet and utility room
- First floor: four bedrooms; a separate toilet and bathroom and a walk-in loft space
- There is a large mature garden which looks out onto countryside
- It has direct access to the churchyard and church





Would you like to know more?
Please do visit us!



The Diocese of Oxford and the Archdeaconry of Buckingham

The Diocese of Oxford serves the mission of the Church in Buckinghamshire, Berkshire and Oxfordshire. The Diocese comprises more than 600 parishes, with over 800 churches, serving a diverse population of more than 2 million people located in all types of settings.

Due to the size and complexity of the Diocese, we have three Area Bishops who exercise considerable strategic and pastoral oversight for their Areas. The Bishop of Buckingham, the Rt Rev'd Alan Wilson sadly died in February of this year. He had been our Area Bishop since 2003. We are currently in Episcopal vacancy, which will hopefully be filled by Lent 2025. The Archdeacon of Buckingham is Ven Guy Elsmore who has been in post since 2016. In September 2020, Revd Canon Chris Bull was appointed Associate Archdeacon of Buckingham.

Through prayer, listening and discernment a [common vision has emerged for the Diocese of Oxford](#). The vision is based on the qualities described in The Beatitudes and addresses what kind of church we are called to be:

**a more Christ-like Church for the sake of God's world:
contemplative, compassionate, courageous.**

Our Common Vision continues to emerge as we identify together areas of our common life where we believe God is calling to focus. The [diocesan focal areas](#) are not a description of everything we do, but these priorities are being supported centrally by resources, training, conferences, workshops, and much more. The diocese is inviting benefices and their clergy to share a vision rather than demanding a response, motivated by hope not driven by anxiety, and thereby to flourish in their ministry. It is hoped that clergy appointed into the Archdeaconry of Buckingham will want to commit to this vision and encourage their benefice to share in becoming a more Christ-like church for the sake of God's world.

The Aylesbury Deanery

The Aylesbury Deanery is one of ten within the Buckingham archdeaconry of the Diocese of Oxford. The deanery serves Aylesbury town itself, a rapidly expanding urban centre of 88,000 (2021); Princes Risborough, a small country market town, and its surrounding communities to the south; and four distinctively rural benefices to the west towards Thame, which include the larger villages of Brill, Haddenham, Long Crendon and Worminghall and smaller community centres and hamlets.

The diversity and richness of life in the 38 churches in the deanery offers many challenges and opportunities. Working in partnership, it is seeking to engage with the evolving mission in our existing rural and urban communities with regular well attended clergy Chapter meetings. It is also responding to the new mission needs of large scale developments around Aylesbury of Buckingham Park and Berryfields to the north, Kingsbrook to the east and Hampden Fields and other planned estates to the south and east, mainly in the adjoining Wendover Deanery.

Revd Jonathan Hawkins
Area Dean

Provisional Role Description

The following provisional role description will apply from the date of licensing. It will be reviewed by the postholder and the Archdeacon of Buckingham approximately six months after the date of licensing. Amendments will be made where necessary, by agreement.

SECTION ONE: DETAILS OF POST

Role title:	Vicar
Type of Role:	House for Duty - St James the Great Church, Bierton
Name of Benefice:	Bierton and Hulcott
Name of Deanery:	Aylesbury
Episcopal area:	Buckingham
Archdeaconry:	Buckingham
Conditions of Service:	Please refer to Statements of Particulars document issued in conjunction with this role description.
Key contact for Clergy:	Archdeacon of Buckingham.
Terms of Service:	<p>This role falls within the Clergy Terms of Service formally known as Common Tenure.</p> <p>The Archdeacon of Buckingham is the designated person by the Bishop of Oxford to issue the Statement of Particulars for the post holder.</p>
Accountability:	<p>Priests share with the Bishop in the oversight of the Church. Whilst, as an office holder, the individual is expected to lead and prioritise work in line with the purpose of the role, they are encouraged to inform the Archdeacon and Churchwardens about any issues exceptional or otherwise that have the potential to affect ongoing delivery of ministry.</p>
Additional Responsibilities:	Primary C of E School Governor, Bierton School House Trust, Bierton Church Charity.

SECTION TWO: CONTEXT

Wider Context

The Diocese of Oxford serves the mission of the Church in Buckinghamshire, Berkshire and Oxfordshire. The Diocese comprises more than 600 parishes, with over 800 churches, serving a diverse population of more than 2 million people located in all types of settings.

Due to the size and complexity of the Diocese, we have three Area Bishops who exercise considerable strategic and pastoral oversight for their Areas. The Bishop of Buckingham until his death in February 2024 was the Rt Rev'd Alan Wilson who had been the Area Bishop since 2003. The Episcopal vacancy is due to run until early 2025. The Archdeacon of Buckingham is Ven Guy Elsmore who has been in post since 2016. In September 2020, Revd Canon Chris Bull was appointed Associate Archdeacon of Buckingham.

Through prayer, listening and discernment a common vision has emerged for the Diocese of Oxford. The vision is based on the qualities described in The Beatitudes and addresses what kind of church we are called to be:

**a more Christ-like Church for the sake of God's world:
contemplative, compassionate, courageous.**

Our Common Vision continues to emerge as we identify together areas of our common life where we believe God is calling to focus. The diocesan focal areas are not a description of everything we do, but these priorities are being supported centrally by resources, training, conferences, workshops, and much more. The diocese is inviting benefices and their clergy to share a vision rather than demanding a response, motivated by hope not driven by anxiety, and thereby to flourish in their ministry. It is hoped that clergy appointed into the Archdeaconry of Buckingham will want to commit to this vision and encourage their benefice to share in becoming a more Christ-like church for the sake of God's world.

SECTION THREE: ROLE PURPOSE AND KEY RESPONSIBILITIES

General:

- A. To exercise the cure of souls shared with the bishop in the Parish in collaboration with colleagues including the praying of the Daily Office, the administration of the sacraments and preaching.
- B. To have regard to the calling and responsibilities of the clergy (as described in the Canons, the Ordinal, the Code of Professional Conduct for the Clergy) and other relevant legislation including:
 - bringing the grace and truth of Christ to this generation and making him known to those in your care.
 - instructing the parishioners in the Christian faith.
 - preparing candidates for confirmation.
 - diligently visiting the key members of the Parish, particularly those who are sick and infirm.
 - providing spiritual counsel and advice.
 - consulting with the parochial church council on matters of general concern and importance to the benefice and wider Deanery.
 - bringing the needs of the world before God in intercession.
 - calling your hearers to repentance and declaring in Christ's name the absolution and forgiveness of their sins.
 - blessing people in God's name.
 - preparing people for their death.
 - discerning and fostering the gifts of all God's people.
 - being faithful in prayer, expectant and watchful for the signs of God's presence, as he reveals his kingdom among us.
- C. To share in the wider work of the Deanery and diocese as appropriate, for the building up of the whole Body of Christ

Key responsibilities specific to the local situation:

To inspire our active church family and encourage new involvement in the life of the church, recognising the gifts of church family members from a wide range of ages and backgrounds.

To help the church build on existing links with children, families, the church school and local youth groups.

To enable growth in numbers and spiritual maturity.

To lead worship in a variety of styles - traditional and modern, formal and informal.

To be a visible presence in the parish, engaging with both church members and non-church members alike.

To be well organised with IT skills, proven time management and the ability to successfully prioritise workloads.

The key responsibilities listed above may be supported by long and short-term objectives to be agreed between the post holder and the Archdeacon.

Other responsibilities

- Participate in the Bishop's Ministerial Development Review scheme and engage in Continuing Ministerial Development.
- Carry out any other duties and responsibilities as required in line with the Parish needs.
- Take care of their own wellbeing including health and safety and building a good repertoire of spiritual and psychological strategies.

SECTION FOUR: BENEFICE SUMMARY

Benefice:	Bierton and Hulcott
Patron:	Bishop of Oxford and Cathedral Church of Blessed Virgin Mary of Lincoln
PCCs:	1
Churchwardens:	1
Ministers:	1 Vicar
Benefice paid staff:	0
Benefice unpaid staff/volunteers:	Lay leaders in St James' Bierton
Buildings:	1
Churchyard(s):	1
Church Tradition:	Central Anglican
Pastoral Reorganisation proposals:	Boundary changes agreed and legal process ongoing

For more detailed information, please refer to the Parish Profile.

SECTION FIVE: KEY CONTACTS FOR THE ROLE

Generic and specific to the role

Groups & committees

- The PCC
- Deanery Chapter
- Deanery Synod
- Deanery Pastoral Committee

In the benefice

- Churchwardens
- Ministerial Colleagues
- Head teacher at local school

Support structures

- Area Dean
- Area Bishop
- Area Archdeacon
- Spiritual director
- Staff at The Diocesan Office with key responsibilities for various aspects of supporting parochial ministry

SECTION SIX: OTHER

Relevant Documentation

This role description is issued alongside and should be read in conjunction with the following documents:

The Ordinal

The Canons of the Church of England

Guidelines for the Professional Conduct of Clergy

Church of England Safeguarding Handbook

Bishop's Licence

Statement of Particulars issued to the office-holder on successful appointment

Clergy HR Handbook (See Diocesan Website)

Parish Profile

Any objectives discussed and agreed between the post holder and the supervising minister

Role description signed off by: The Venerable Guy Elsmore Archdeacon of Buckingham

Date of issue:

To be reviewed next on: 6 months after issue