

Parish Profile for the post of

# Rector

of the

Parish of Badshot Lea and Hale.

Diocese of Guildford



# Welcome from the Bishop of Guildford

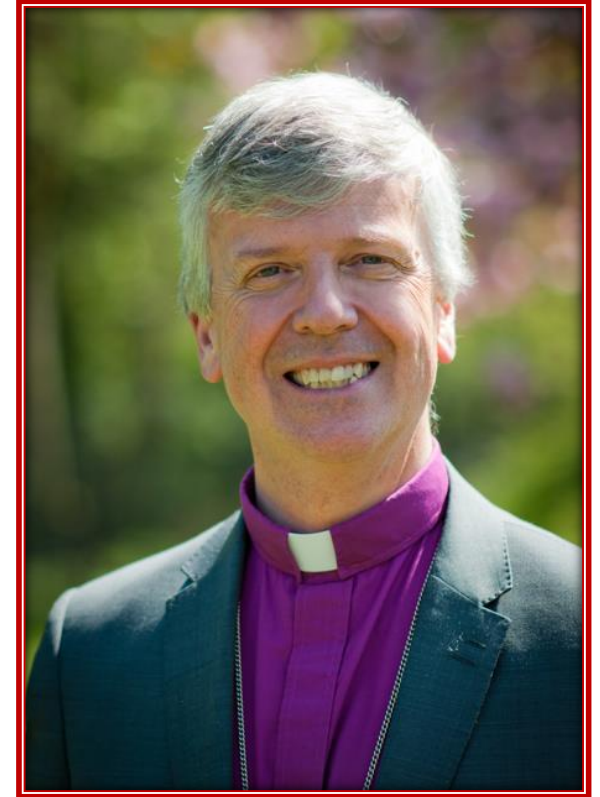
The Diocese of Guildford is a warm and friendly place to be, with a strong cohort of gifted and passionate laity and clergy, some excellent church schools, and plenty of beautiful countryside to enjoy on a day off!

Our vision as a diocese is to see lives and communities transformed through the love of Christ; and, to that end, we have recently refreshed our Diocesan Strategy Transforming Church, Transforming Lives, with a particular focus on Growing Disciples, Growing Diversity and Growing Community. Although our congregations are generally rather larger than average, we are all too conscious that we are only reaching a tiny proportion of our parish populations, and are particularly keen to become more effective in passing on the baton of faith to younger generations.

Our team of Mission Enablers are committed to working with every parish in fleshing out that vision in an appropriate way, going with the grain of the church's history and tradition, whilst also suggesting new ways to 'proclaim the gospel afresh in each generation'. The pandemic, while presenting many challenges, has helped to forge new relationships between many of our churches, creating a spirit of 'us and us' more than 'them and us', and opening up new approaches to partnership and inter-church collaboration.

If you share our vision for transformation, and have a track record in growing disciples, growing diversity and growing community, we'd love to hear from you!

**Rt Revd Andrew Watson**  
Bishop of Guildford



## Welcome from the Archdeacon

Thank you for taking the time to look at this Profile for the Parish of Badshot Lea and Hale. We are looking for a new Rector who will grow disciples of Jesus among the people of these communities, and who has the gifts needed to help develop a shared vision for the next stage of their life together. The stated aims of these churches are to

- Grow in Spiritual Maturity
- Grow in Number
- Grow Younger
- Grow in Community Engagement.

But what does that look like? Could you love these people and lead these churches in a way that makes these things a reality? Could you help them to discover more of what God's vision is for the three churches of this parish? Could you encourage them to grow in faith and to share that faith confidently with their communities?

For the right person, this is an exciting post, with some good foundations to build on, and the challenge of helping individual churches and the whole parish reach their potential. There's a great sense of unity and support, although the three churches maintain their own unique identities. The area is very diverse, and the churches are fully engaged in community life. All three churches are felt to be open and welcoming. 'Inclusiveness' in all its dimensions is something that is significant and celebrated. The churches touch the lives of many people and although congregational numbers can be low, experience has shown that growth is both desired and possible. Resources are available - a much-improved financial situation, a committed local team, support from the Diocesan Mission Enabler Team, and church buildings which have great flexibility and are able to accommodate large numbers. The buildings are not without their challenges, but they offer the opportunity for significant development.

If you would value an informal conversation about this post, please do not hesitate to get in contact with me by emailing [catharine.mabuza@cofeguildford.org.uk](mailto:catharine.mabuza@cofeguildford.org.uk) or by calling 07785 990208.



**The Venerable Catharine Mabuza**  
Archdeacon of Surrey



## Welcome from the Churchwardens

We are looking forward to meeting our new Rector, and welcoming them to work with our existing ministry team who, in this time of vacancy, are delivering our current service pattern with minimal external support.

We are a warm, welcoming and inclusive parish with three churches and an online congregation, and we are dedicated to sharing God's love with everyone we meet. We have grown in unity and community engagement over the past decade and many local people see our churches as 'theirs' for occasional offices and special services such as Christmas and All Souls. However, we currently don't have a noticeable spiritual impact on those who live nearby, and many people seem to view faith as an optional extra or simply irrelevant.

We want to reach these communities on a deeper level, sharing the Christian Gospel with them.

We are offering you the opportunity to guide us on the next stage of our journey, so that we can move forwards in our vision to grow God's Kingdom; in order to do that, we aim to:

Grow in Spiritual Maturity

Grow in Number

Grow Younger

Grow in Community Engagement.

We see a need to mature with a deepening of faith and discipleship. The life of our churches depends on increasing our membership and on younger generations taking an ownership of our mission. As we engage more in the community greater opportunities will arise to share the love of Christ and bring people to faith.

Thank you for taking the time to consider this opportunity. We hope to hear from you soon.

Pamela & Kris



Kris



Pamela

## Introduction

The Parish of Badshot Lea and Hale is set in south-west Surrey on the edge of the attractive town of Farnham with 'leafy Surrey' to the south. The parish has three churches: the Church of St. George, Badshot Lea; the Church of St. John the Evangelist, Hale; and the Church of St. Mark, Upper Hale, all within 10 minutes of the Rectory.

Each church currently has its own worship style, and we also offer an online service, so across the parish we hope to provide 'something for everyone'.

Since the pandemic we have opened our doors to a variety of community groups and private hirers so our buildings are well used. This also provides much needed income which helps us to pay our parish share.

The parish has a very mixed community. In addition to traditional village housing there are several modern estates, including areas of social housing and units of sheltered accommodation. Recent developments have blurred the village boundaries but there is still a strong sense of community within them.

There are a number of excellent state and private schools within, or within easy reach of, the parish, and, although none are Church of England schools, we have built up strong relationships with several of them.

There are good shopping and health care facilities locally and two general hospitals about 10 miles away. We also have good road and rail links with London being accessible within an hour.



St John's Church



St George's Church



St Mark's Church

# Mission

Our mission is to share our faith in word and action so that others may come to know the love of Christ.

Looking back a few years we can see where improvements were required and how our parish has moved forwards. In the past:

- The parish was formed from a reorganisation in which two parishes were combined into a single one. This was not a harmonious combination and there were some deep divisions.
- We had financial difficulties and were unable to pay our parish share commitment.
- Our congregation numbers were low, though we did start a number of initiatives which we hoped would make our worship more accessible to visitors and those unfamiliar with church.

Today we can see that the parish is in a much better place:

- Each of our churches is always seen as welcoming and hospitable. Our churches are very accepting and supportive especially when mistakes happen; we work through things together.
- We have a united vision for the parish and we offer different service styles whilst still using the same liturgy.
- During the vacancy we have been maintaining our services primarily using only our own resources with little need of external support.
- We have several successful outreach activities – e.g. Connections, Little Bees, Friday Night Games, Clothing Bank and are starting to develop a mixed ecology of church with ‘Open the Book’ and services at a local care home and plans to introduce some faith elements into our secular outreach activities.
- We have a strong parish choir and an eclectic mix of music





Today in our parish, continued:

- Our celebration services are popular – with a wider range of parishioners, in particular at Christmas and Easter.
- We have good community connections; see page 16.
- We have strong school links; see page 16.
- We are paying our parish share in full.

However, there are some areas which we are not doing as well:

- The value of home groups is recognised, but currently we do not have a lot of enthusiasm for attending. However, we have numerous small groups that do great practical work whilst sharing valuable fellowship.
- Many local people see our churches as ‘theirs’ for occasional offices and special services such as Christmas and All Souls. However, we don’t have a noticeable spiritual impact on these groups of people.
- In the past, we had a thriving lay-led initiative called Family Praise which was popular with families and young children but this has fallen away. We also ran a successful Messy Church but this has not been revived since lockdown.

Looking to the future we would like help to develop our strengths; in particular:

- Growing in confidence in sharing our faith in Christ.
- Growing in ownership of the church’s mission.
- Growing a mixed ecology of church to reach out to all in our parish.
- Giving every man woman and child in the parish the opportunity to hear the Word of God and to understand that God loves each and every one of us unreservedly.
- Learning to connect our many existing community activities with the message of Jesus.
- Encouraging a culture of generosity to continue paying our parish share and build up unrestricted funds.
- Having flourishing small groups.
- We are open to making changes to our services and our service pattern.



## Ministry Team

**Stella Wiseman - Curate** (16 hours per week) and **administrator** (30 hours per week).

Stella is currently the engine of the parish combining her role as Parish Administrator which she has been doing for five years, and her curacy training (year 3 of 4), to lead the parish during the vacancy. One of her passions is Inclusive Church for which she is the Surrey Ambassador.

**John Evans - retired Vicar** (92); an active member of St John's congregation.

John is a reliable part of our team. He leads Sunday worship twice monthly as well as a weekly mid-week communion. He also leads a short service at a local care home once a month, supported by members of the parish choir.

**Kris Lawrence - Churchwarden**, Occasional Preacher, Occasional Worship Leader and regular worshipper at St George's.

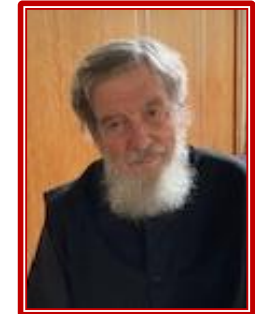
Kris felt called to leading worship and was part of the team setting up 'Family Praise'. She has embraced the concept of intergenerational worship and, now retired, is keen to investigate further training in this area. She is also engaged in a discernment process to consider ministry training.

**Pamela Marsham - Churchwarden**, Occasional Preacher, Occasional Worship Leader, Trainee LAM and regular worshipper at St John's.

Pam has been a member of St John's for many years. She was asked on a couple of occasions to become an Occasional Preacher and eventually agreed somewhat reluctantly. To her surprise and delight she found she enjoyed the challenge and then felt called to become an occasional Service leader and to train to become a Lay Assistant Minister (LAM).

**Michelle Chapman - Volunteer Children's and Youth Worker**, Occasional Worship Leader, Trainee Occasional Preacher.

Michelle is passionate about youth work; she is instrumental in the provision of our online toddler service, visits school to lead assemblies, organises interactive sessions which are always popular, and runs confirmation classes.





## Description of Role

We are looking for someone who:

- will help us to learn to be good disciples of Christ.
- will help us to engage with families and bring them to faith in Christ.
- will help us develop a mixed ecology of church.
- will help us to strengthen our unity and reach out to our parish with the love of God.
- is a collaborative leader who is capable of delegation.

We know we need to change so we are looking for someone who will be happy to share their fresh ideas.

## Person Specification

We are praying for a sociable, caring pastor who is creative and prayerful; who listens to God and looks for ways to share God's love in a divided and secular world.

Someone who:

- can see the big picture and marshal our resources accordingly.
- has the vision to grapple with the varied needs of our parish.
- will lead us by example – modelling the love of Jesus and helping us to seek God on a deeper level.
- can recognise people's gifts and help them to see those gifts within themselves; then develop them and enable them to use those gifts to help build God's Kingdom.
- can relate to people from any age group and cultural background and invite them into faith.
- will help us reach our communities on a deeper level, sharing the Christian Gospel with them.
- is not afraid of trying out new ways where necessary.
- is prepared to lead but also delegate whilst seeing and encouraging potential in others.

Some things our parishioners have said...  
...about our churches:

Our churches are friendly and welcoming,  
offering fellowship and support.  
Everyone's contribution is valued.

...and about our new Rector...

I would like you to be an ally to the  
LGBTQIA+ community.

You should be someone who considers  
everyone from the cradle to the grave an  
important part of the church.

A vicar who is kind, easy going,  
approachable and fun!

## The support we can give

The parish is committed to sustainable ministry and consequently sees days off, holidays, retreats, opportunities for learning and development, adequate time for family life, friendship and recreation, as an integral part of our new Rector's life.

The PCC meets about six times a year to manage parish business.

In non-vacancy times, the Standing Committee meets monthly, via Zoom, normally on the first Thursday of the month to discuss parish-wide concerns and set the agenda for PCC.

The Vacancy Management team of Lay Vice Chair, Churchwardens, Treasurer and Curate (also Administrator) is meeting every two weeks to oversee the management of the parish. The team oversees a number of sub-committees/small groups which are managing the various parish activities

The administrator works a flexible 30-hour week and is responsible for hall bookings (budgeted income for 2024 of £44,000), administration of occasional offices, general administration such as printing and answering queries, publicity and the parish magazine.

The existing ministry team looks forward to supporting you in our ministry going forwards, as well as with prayer, friendship and fellowship.



# Worship

Our current pattern of services:

## Sunday

- 9:30am St John's Church: Sung Communion - Traditional  
Music: Organ or piano, Hymns Old and New, supported by a small robed choir  
Attendance approx. 20, with occasional children
- 10:00am St George's Church: Communion - Intergenerational  
Music: Organ or piano, Hymns Old and New supported by small choir  
Attendance approx. 30, with approx 10 children attending occasionally
- 11:00am St Mark's Church: Communion - Modern Worship, presented on screen  
Music: small band – violin, bass & keyboard  
Attendance approx. 25, with occasional children



During the vacancy our resources have been stretched, but we have maintained at least one communion services each week across the parish with each church having at least two communion services each month. All other Sunday services have been a Service of the Word.

## Wednesday

- 12pm St Mark's : Said Communion  
Attendance approx. 6

## Online

We offer a weekly Service of the Word and each month a Toddler Service. These include hymns that were recorded during lockdown when these services were initiated.

We also had monthly Taizé and BCP services, but these have been put on hold.

The Electoral Roll is 108 although the church family numbers around 170.



Online service sock puppet



**Occasional Offices** – here are the numbers of weddings, baptisms and funerals held in the parish in recent years:

Year	Weddings	Baptisms	Funerals
2022	6	14	26
2023	5	8	28
2024	2	6	17

**Baptisms** – are generally held within the main services. It is considered important that the baptism candidates and families feel welcomed into our church communities.

**Readings and intercessions** – are read by lay people. Being involved in the leading of a service can be part of discipleship growth.

**Outreach services** – are run throughout the year, e.g. Pet Service, Pride Service, Harvest Festival (incorporating Apple Day at St Mark's and Harvest Sheaf making at St George's), Mothering Sunday, St George's Day, All Soul's Day with those recently bereaved invited, etc., and the Carol Services and Christmas Eve Crib services which are well attended.

**Vestments** – are worn at all celebrations of the Eucharist.

**The choir** – may come together for some of the special services and may robe if it feels appropriate.

**Services are also held in Farnham Mill Care Home.** We also provide home communion where required. The residents of Farnham Mill occasionally attend Sunday morning worship at St George's.

O come, let us sing to the Lord; let us make a joyful noise to the rock of our salvation!

Psalm 95:1

**Children and Communion** - The PCC have agreed that children may take communion from the age of seven with their parent's or carer's permission, and after following a programme of preparation.



**All-age Worship** – At George’s Church for many years there was an additional non-eucharistic service at 11:30am on a Sunday morning, originally called ‘Family Praise’. This was primarily lay-led and aimed to offer all-age worship. As this followed shortly after the 10am service, it was hoped that the two congregations would socialise over coffee served between the two services. This service was, on the whole, very popular with young families although that popularity started to wane in 2019, just before lock-down.

In reality, the two congregations rarely met so there were two distinct worshipping communities. Also, as children approached their teenage years the families started to drift away. After lock-down it was decided to combine these into a single service, but to aim for this to be intergenerational.

The pandemic has impacted our churches considerably and gave us opportunity to make some changes. It was important that our worshipping communities did not feel isolated during lockdown so we developed on-line services. This proved very popular, both in the local community and also with visitors from across the world. Reaching out to families, we also developed a Toddler service. The main service is viewed by care homes and the Toddler service is shared with pre-schools as well as individuals. We still have viewers for both services so the intention is to keep them running.

We encourage families to worship at our churches and our style of worship has become less formal than pre-Covid. We may include a short drama or poem as a representation of the readings or theme of the service. This change has been accepted positively by the majority of our regular worshippers.

The churches are all very welcoming to families and provide spaces for children’s activities within the worship space.

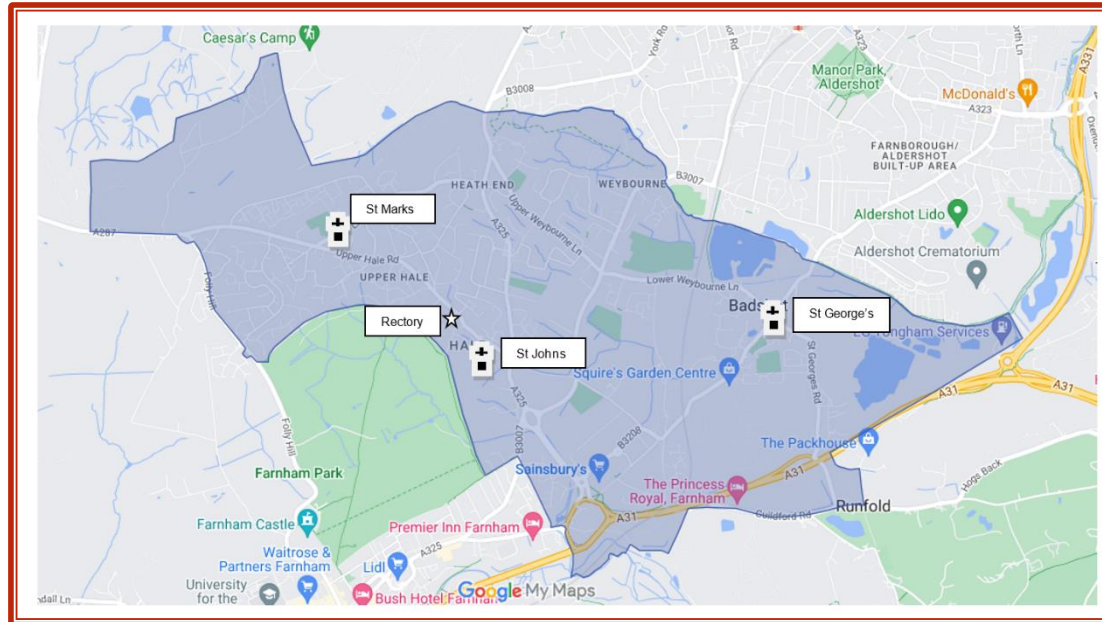
There remains a problem of retaining young people today – and there are so many opportunities for youngsters that compete with our worship times.

Other initiatives to attract young people and young families have been introduced across the parish and run for a while e.g. Messy church, Babushka, family worship, holiday clubs etc. None of these is running currently; there is an enthusiasm on our side, but not always the resources or the take-up to make them happen.



## A bit about life in the parish

The Parish of Badshot Lea and Hale is set on the edge of the attractive town of Farnham in south-west Surrey, bordering Aldershot to the north-east and Farnham Park to the west. It includes the villages of Hale, Upper Hale, Folly Hill, Sandy Hill, Heath End, Weybourne and Badshot Lea and has a population of approximately 14,000. It was formed by the combination of the Parish of Hale and the Conventional District of Badshot Lea in July 1996 and was reorganised into a single parish in 2014, with three churches: the Church of St. George, Badshot Lea; the Church of St. John the Evangelist, Hale; and the Church of St. Mark, Upper Hale.



In 2009 the parish became a registered charity.

It is a very mixed community; in addition to traditional village housing there are several modern estates, including three significant areas of social housing with varied needs, and units of sheltered accommodation. There has been some recent infill building development and although the villages may appear to have no definite boundaries, there is still a strong sense of community within them. In addition to the newer residents, there are a significant number of long-term resident families who have lived in the parish for generations.



There is a Working Men's Club in Badshot Lea and a Social Club in Upper Hale. While some people work locally or are home-based others commute to the various outlying towns, e.g. Guildford, Woking, Reading, Basingstoke, Alton, Farnborough etc. The parish is within easy reach of the A3, A331, M3 and M4, and has a local rail link to Waterloo.

The parish has a variety of housing, from large, detached houses through to social housing; there is sufficient social housing in three main locations to qualify the parish as a CofE estate parish. However, the congregations are almost entirely made up of those in the middle range of housing.

Facilities within the area include a small number of local shops in Hale, Heath End, Weybourne and Badshot Lea. The main shopping areas are in Farnham and Aldershot, both of which are in the latter stages of large redevelopments. There is a Sainsbury's superstore near Badshot Lea, and both a large Tesco store and a large Morrisons on the edge of Aldershot, close to the A325.

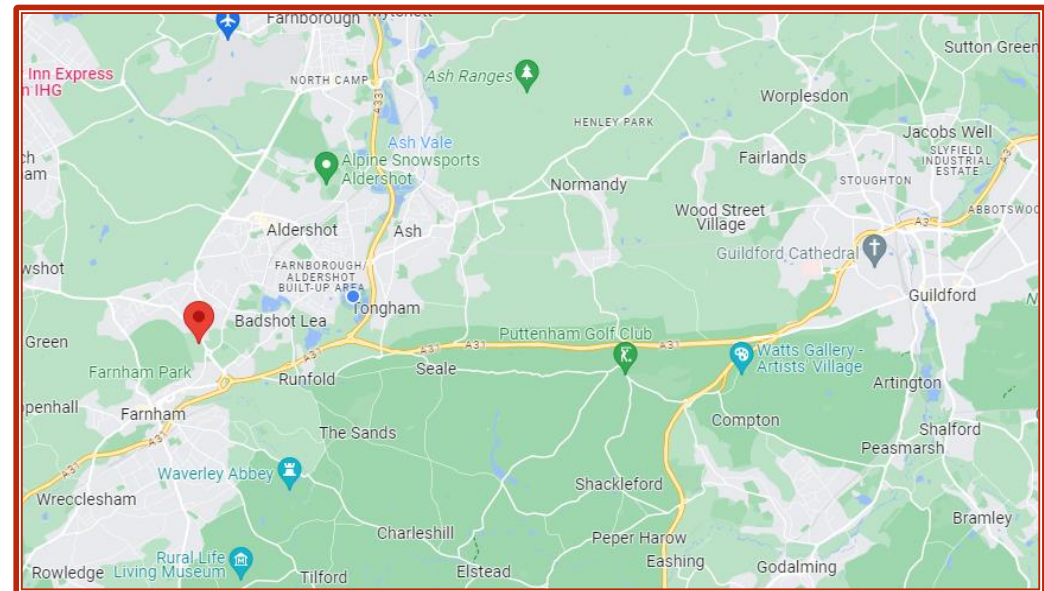
Guildford Cathedral is about a 20-minute journey in light traffic.

## Schools

There are a number of excellent state schools within, or within easy reach of, the parish, which cater for all the age groups.

There are infant schools in Folly Hill and Badshot Lea. There is a primary school, Sure Start Centre and nursery in Hale, and a primary school in Weybourne.

There are two comprehensive schools in the parish, one in Heath End and the other, All Hallows (Roman Catholic), in Weybourne. All Hallows also has a sixth form. Another good comprehensive is Weydon School, just outside the parish. Other sixth form colleges are in Farnham, Farnborough, Godalming and Alton. There are also a number of private pre-school, nursery provision and schools in the area.



## School Links

We work well alongside the local schools. We have been running a successful mentoring initiative at Heath End School for children in Years 9 and 10. This has currently been put on hold as we have no one to lead but we hope to reinstate it when we can.

We host the community Christmas Light switch-on in Badshot Lea and support the school's Easter Egg Hunt. The school is included in the Parish Fete, held in the St George's Church garden. The head teacher of the Badshot Lea Village Infant School was involved in the development of our parish profile.

We take Open the Book into schools and a nursery.

We invite schools to experience prayer stations at St John's at specific festival times and schools and a local nursery have their own special services held in our churches, led by our ministry team.

## Community Links

We have developed good community links with groups such as Hale Community Centre, Sandy Hill Inclusive Partnership, the Badshot Lea Community Association, the Farnham Literary Festival with whom we run poetry competitions, the arts centre Farnham Maltings and town-wide organisations including the Farnham Forum and Farnham Connects.

At our Parish Fete we invite local community groups to promote their activities. This helps our fete to be a more diverse and attractive event, but we also hope it generates more interest in the community groups.

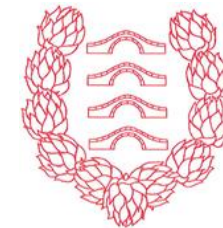
We have provided prayer stations at various community events, e.g. Hale Carnival and Farnham Gostrey Meadows Festival.

"Badshot Lea Village Infant School, while not a church school, values its links with the parish and enjoys its place in the community.

From visits to the church for our RE lessons, our wonderful 'Open the Book' assembly friends, and our end of term services, we would love to continue embracing our shared ethos and work within the local community.

Having a vibrant, personable and inclusive person to lead the parish and help with some of our assemblies would be fantastic."

Gemma Ball, Head Teacher



## Healthcare

There are two general hospitals in Frimley and Guildford, both about 10 miles away. Farnham Hospital (about one mile away) has an outpatients department and wards for elderly patients together with a day hospital and GP surgeries (no A&E). All three of these hospitals are served by full- or part-time chaplains.

The Phyllis Tuckwell Hospice is on the south side of Farnham about three miles away. Farnham Mill Nursing Home is in the parish and a retired member of the parish visits monthly. There are GP surgeries in Farnham and Aldershot.

## Safeguarding

The Parish Safeguarding Officer (PSO) has been in post since October 2020. She provides regular Safeguarding reports to the PCC, updates the Parish Dashboard at least monthly and ensures that role holders have up-to-date relevant Safeguarding training and the right level of DBS check. She is helped by two DBS validators and the PCC Lay-Vice Chair who is the Safeguarding Lead on the PCC. The diocese, PCC, clergy and parishioners are very supportive of the PSO's work and readily comply with requests for information, to complete training and have a DBS check. Keeping close track of what needs doing has led us to 100% on the Church of England Dashboard. The diocese has congratulated us for our achievement in this area. We are very grateful for the PSO for her efficiency in this role.





## Other members of the team:

Dave Walter – Lay Vice Chair PCC, Deputy Churchwarden and regular worshipper at St George's.

Bob (Robert) Shatwell – Deputy Churchwarden and regular worshipper at St Mark's.

Richard Myers – Treasurer, Occasional Preacher and regular worshipper at St Mark's.

June Jasper – PCC Secretary, lead choir member at St John's and regular worshipper at St John's.

Jo Taylor – Parish Safeguarding Officer and regular worshipper at St Mark's.



Lucy – St George's mischievous dragon

## Other worshipping communities

There are a Baptist, a Methodist and a Roman Catholic Churches within the parish. Good informal relations exist with them.

We are members of 'Farnham Churches' which organises a Good Friday Walk of Witness and joint projects such as the Week of Christian Unity and coordinated support of Christian Aid Week.

Ecumenical relations in Farnham are supported by the Farnham Christian Community Trust (FCCT), an independent body which resources a wide range of ecumenical activities including leading school assemblies, parenting groups and social activities.

The Syro-Malabar Church regularly uses our churches for social and children's events and has taken part in a fundraiser for Christian Aid with us. The Apostolic Faith Church (Mugodhi) meets at St George's Church every Sunday afternoon. We are keen to encourage these links.

We have excellent relationships with other faiths, particularly the local Muslim communities, and our curate speaks at interfaith meetings. We host a regular women's interfaith meeting.



Churches Together in Farnham

WELCOME



## Church Buildings

**St George's Church** dates back to 1903. It is sited on the crossroads in the centre of the village opposite the village infant school. The vicarage is alongside St George's and is currently let out by the diocese, not being used by the clergy.

The church can seat 125, extending to 200 for larger services by expanding out into the hall. Seating is moveable and stackable which makes the space very versatile. At the last quinquennial the church was judged to be in good repair.

The church hall is built onto the side of the church and comprises a large, light and airy meeting hall, a well equipped connecting kitchen and two small rooms. One of these - The Haven - is ideal for business meetings, counselling or as individual working space. There is disabled access and toilet facilities, and a dedicated church car park adjoins the hall. There is also a lawned area alongside the church which is available for church, community and school events.

The hall can be partitioned to create two smaller areas and the partitioning between the church and hall can be opened to create a single space for big occasions and large congregations. This flexibility makes the building a very versatile space for both church and community use.

Having a door from the hall out to the car park also makes this a suitable space for outdoor services.

A nave altar is used in preference to the chancel altar helping to make a less formal atmosphere but without infringing on due reverence.

The congregation covers a wide age span. The worship style has become more relaxed since Covid with the intention of it being inter-generational. This is a challenge, but we are moving in that direction. St George's is a fully inclusive, warm and welcoming church.

A number of community groups and other worshipping traditions are regular hirers of both the church and hall spaces, with other groups hiring on an ad-hoc basis.



**St Mark's Church** was built more than 140 years ago and was given Grade II listing in 2021. In addition to the high altar, it has a nave altar which is used for the main Sunday Eucharist. Its seating for 100 is moveable and the church is used by both congregational and other groups.

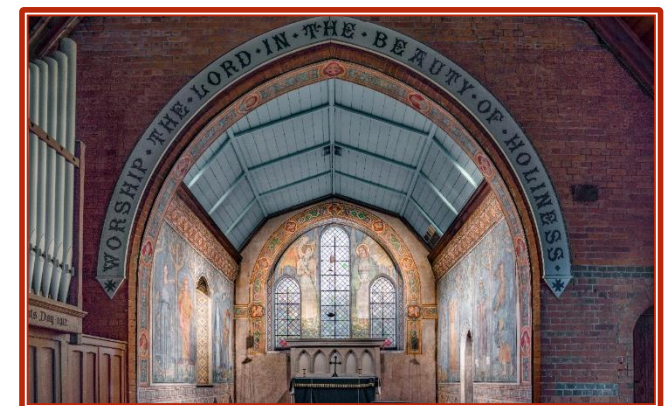
Attached to the rear of the church is a community centre (built 1996) for the use of both church and village. The parish office is beside a community room consisting of a kitchen, meeting room and unisex toilets together with disabled toilet facilities. The lower area consists of a meeting room, a storage area, boiler room and unisex toilets.

For a number of years, plans for the reordering and refurbishment of the church have been discussed with a view to making the church a more flexible worship and community space.

St Mark's has a small but committed congregation of ~20 regular worshippers. It is situated on top of the hill in a residential area opposite the village's primary school. St Mark's is a welcoming, outward-looking church which seeks to be part of the local community.

The preservation of the church building is important to many outside the worshipping community. The church organ (which is affectionately called 'Emily' after the local benefactor, Emily Mangles, who paid for it) was refurbished in 2018. The church houses a set of historically important murals by local artist Kitty Milroy dating from the early 20th century and restored in 2021. The 'Kitty Milroy Murals' are now recognised as being of both local and national importance, particularly as examples of the development of mural art in Great Britain, and in recognition of women's painting in the 20th century. In 2022 the church was shortlisted for a Surrey Historic Buildings Trust Heritage Award.

Both of these restoration projects were expensive, and the fundraising needed involved many local people. The individuals pictured in the murals were local residents and the daughter of one of the models is a member of the congregation. These activities raised the profile of the church in the local community, and the church marks Kitty's birthday each year.





**St John's Church** is a Grade II listed church built over 180 years ago. It is an attractive church in Romanesque style, close to Farnham

The church has a nave altar, which is used for the main Sunday Eucharist, in addition to the high altar. The church can seat approximately 250 people. Adjoining the north side of the church, though not part of the main structure, is a small meeting room (the Sumner Room) which shows some evidence of subsidence. It has a kitchenette and a utility area with a toilet. Though the area is kept in reasonable order, it is in need of updating.

The congregation is mainly elderly and the average age is probably about 75 years. We do therefore need someone who will encourage young people to come to St John's while not excluding the older but faithful members.

There is an attractive open churchyard with a Garden of Remembrance.

### **St John's Project**

Prior to Covid there was an ambitious (£2M at 2019 prices) project, 'The St John's project', which was to make the church a more modern and versatile space and a hub for young people to use after school. The fully specified and documented plan was suspended after Covid with funding/grants significantly more difficult to come by. The current expectation is that only a cut-down project will be practical, but a moderate amount of work will be required to enable the potential of a relatively under-used building to be exploited.

As a small start to the St John's project, the pews were removed from the north aisle area to create an open space that would potentially allow a more versatile use of the space. The floor was temporarily levelled but this is showing signs of wear and needs attention. The original plan was to remove all the pews and have all the floor levelled and replaced, recreating an attractive open and versatile space.

Another part of the project was to obtain land to the south of the churchyard which would become a much-needed car park and allow for the creation of a much more accessible approach to the church, rather than the existing long and steep walk. The car park is part of a wider planning application for use of a parcel of land. As there is no hall, the hope was to improve our facilities and make the church building dual purpose. This would help to increase our income.

The church tower is in need of significant work, in excess of £50,000 and a start has been made to raise these funds



## Life of the church

**Little Bees** – weekly toddler group for pre-school children.

**Arts at St Mark's** – fortnightly art group with cake and coffee.

**Connections** – fortnightly social group for over-50s at St George's.

**St John's Café** – twice monthly drop-in coffee morning at St John's

**Clothing Bank** – a weekly clothing give-away plus café.

**Crafts Café** – run by Farnham Maltings, a nationally renowned arts centre, fortnightly, offering the opportunity for people to try something new.

**Friday Night Games** – twice monthly games evening for all ages, includes a meal and some aspects of Youth Alpha.

**Questioning Faith** – a course for those new to faith, or those interested in exploring faith and or difficult topics.

**Faith groups** – weekly study / prayer groups face-to face or online. Lent courses and other themed courses to deepen our faith and learn more about prayer are run occasionally.

**Interfaith women's meeting** – monthly to discuss topics of the day.

**Choir** – weekly rehearsals for services, funerals, baptisms and weddings and to prepare for special events. This is a whole parish choir and also attracts some non-church singers. Each church has choir members who lead the worship on a Sunday.

**Craft market** – four times a year offering a range of local crafts and a café.

**Farnham Poetry Competition** – run on behalf of the Farnham Literary Festival with the final taking place at St Mark's.

**Open the book** – we have an Open the Book team that visits local primary school to tell Bible stories in an accessible way.



Explore the big questions of life

? Questioning Faith ?  
?



## Events

**Parish Fete** – annually – very much a community event as we invite local groups and organisations to promote themselves. Some of the groups that hire our buildings come along to entertain. With a BBQ, refreshments, bar and grand raffle, this is the main fund-raising event in the parish.

**Harvest Supper** – very popular across the parish and we also extend our invitation to the various groups that use our premises. All the entertainment is ‘home-grown’ and it’s a wonderful celebration of the variety of talents across the parish.

**Barn Dances** – with our in-house band and caller these are always great fun and well attended by parishioners and other people in the community

**Celebration events** – we have an enthusiastic ‘catering team’ who love the opportunity to help put on a celebration. For example, for the Queen’s Jubilee we arranged an afternoon of entertainment, calling on some of our hirers to help with this, which culminated in an afternoon tea.

**Other church social events** – a variety of events run throughout the year and are always popular; seasonal beetle drives, top ten carols/worship songs, concerts, flower festivals etc.

**Easter Egg Hunt** – we support this event run by Badshot lea Village Infant School by running the station at St George’s Church.

**Village Lights Switch-On** – this is a combined church and school event in Badshot Lea with the church being the location of the celebration with hot dogs, mulled wine and village entertainment. The school is lit up and fireworks light the air as a culmination of the event.

**Open-air carols** – we hold open-air carol-singing in the Upper Hale graveyard, in conjunction with the town council and the Hale Community Centre and ‘around the tree’ in St George’s garden.





## Organisation and Finance

**Standing Committee and PCC** – these are the main bodies that oversee the running of the Parish. Standing Committee (SC) consists of the churchwardens, the PCC Vice-Chair, Treasurer and Curate who is also the Administrator. SC meets fortnightly unless circumstances dictate otherwise. PCC meets every other month. Other subgroups meet to organise social events and to coordinate the hymns and music for our worship.

**Finance** – After a few difficult years the Parish started to pay its full Parish Share in 2022 and has continued to do so since then. The main reasons for this were a significant focus on letting the various church buildings and the letting of the curate's house.

Finances are tight with us basically breaking even on the general fund in 2022 (deficit of £2k on income of £137K) and 2023 (surplus of £1,202 on income of £143,165), so no funds are being put aside for major projects. The budget for 2024 shows a similar outcome on 'normal activities', but a small deficit when you take into account the exceptional costs of the vacancy. Once we return to normal in 2025, it is expected that the accounts will return to a small surplus.

Broadly our income is spread: 45% Giving and Collections, 25% Hall Hire, 10% Property rental, 5% Service fees and 15% other sources. Our expenditure is spread: 57% Parish Share, 20% administrator, 7% utilities, 5% church maintenance, and 11% other.

Unrestricted reserves at the start of 2023 were £8,705, and restricted reserves were £25,449 of which some £18,000 related to Fabric Funds. The position at the end of 2023 was £9,907, and restricted reserves were £28,016 of which some £22,320 related to Fabric Funds. The parish owns a curate's house (approx. value £325k), which is currently rented out.

Clergy expenses are met in full by the parish.

## Farnham Deanery

The Deanery consists of thirteen parishes with a wide range of styles and traditions. Chapter meetings, which occur in a different parish each month, are always well attended and the clergy meet for lunch, prayer, and encouragement. They also enjoy a popular annual twenty-four hour retreat, which provides an opportunity to further build relationships.

The Deanery Synod meets at least twice a year, where we seek to learn from one another and think how we might work together.

The Parish Needs Process continues to be a useful resource which helps us identify common themes and explore how we can serve the whole Deanery.

## The Rectory

The Rectory was built c.1930. It is located in the Upper Hale Road between St Mark's and St John's churches and was built so the main living area is at the back of the house. There are four bedrooms and a family bathroom and shower room. It is south-facing and is double glazed.

Downstairs there is a vestibule leading to an attractive light hall, off which is a cloakroom with hand basin and separate toilet. There is a good-sized study, a large kitchen with an adjoining utility area, breakfast room and separate toilet. There are two large reception rooms to the rear of the house, facing the garden.

To the rear of the house sloping gently downhill is a large garden with trees and shrubs.

**The Rectory**, 25 Upper Hale Road, Farnham, GU9 0NX



## In Conclusion

Thank you for taking time to investigate the prospect of Badshot Lea and Hale as the next step in your journey. We hope you have been encouraged by what you have read and can consider this to be the place God is directing you to, at this time, to help to grow His Kingdom.

We welcome you to come and visit the parish to see what we can offer as you consider your potential in this place.

Our church's addresses are:

**St John's Church** (0.6 miles from Rectory) Hale Road, Farnham, GU9 9RP

**St Mark's Church** (0.7 miles from Rectory) Alma Lane, Farnham, GU9 0LT

**St George's Church** (1.6 miles from Rectory) Badshot Lea Road, Farnham, GU9 9LD

Please make yourself known to our welcomers if you choose to attend any of our services. We would love to meet you.

For more information go to: <https://badshotleaandhale.org/>

