



St John the Evangelist

The Parish of Hipswell: St John the Evangelist's, Hipswell, and St Cuthbert's, Colburn



Our aim: To be a warm, welcoming church; open to the wider community; confident in Jesus' love and presence.



St Cuthbert's



Contents

Page 3: The Parish of Hipswell, with Scotton and Colburn

- Introduction - with map of the Parish area

Page 4: The Diocese of Leeds - with map showing episcopal areas

Page 5: Local Area

- The Yorkshire Dales and the North York Moors
- Catterick Garrison
- Hipswell, with Colburn and Scotton
- Richmond
- Northallerton and Darlington

Page 8: Worship within the Parish

- St John the Evangelist
- Local area of St John's
- St Cuthbert's
- The St Cuthbert's Community Hall
- Local area of St Cuthbert's

Page 12: Services within the Parish

- Remembrance Sunday
- Ecumenical events

Page 13: Parish Activities

- Safeguarding
- Pastoral care in the community
- Wellbeing café
- Prayer group
- Alpha and The Bible Course

Page 15: Fundraising and Other Activities

- Harvest Festival and fellowship lunch
- The Colburn Reunion and Gathering
- Summer Fun Day
- Mission
- Monthly quiz
- Veteran's Art Club
- Community Garden Scheme

Page 17: Meet Some of the Team

Page 18: The Vicarage

Page 18: Local Schools

The Parish of Hipswell, with Scotton and Colburn

Introduction

Our parish, which is in the Diocese of Leeds, has around 17,000 people, and encompasses the villages of Hipswell and Scotton, and the town of Colburn, surrounding Catterick Garrison on three sides.

The vacancy is for two churches, St John the Evangelist in Hipswell, and St Cuthbert's, Colburn. The churches are approximately 10 minutes' drive from each other. The area provides a distinct community life within Catterick Garrison and is close to the stunning Yorkshire scenery.

We have small, willing congregations, who work hard to ensure our churches are as well maintained as possible; fundraising is ongoing, though more needs to be done. There is also opportunity for growth, spiritually and numerically, particularly amongst younger folk.

The Parish of Hipswell, with Scotton and Colburn



[ArcGIS - Church of England parish map](#)

We are praying for an inspirational vicar who feels called to serve and lead us and will help us to discern our vision for the future. Our two churches are working well together to further the mission and ministry within the parish. We share a joint PCC, with two churchwardens, a secretary, treasurer, and a few others who provide a valuable contribution to parish life. There will be much support for the new incumbent, as well as a warm welcome within our fellowship. The area has good facilities and amenities, and we feel blessed to live in the beautiful countryside of North Yorkshire, close to the Dales.

The Diocese of Leeds

The Anglican Diocese of Leeds comprises five episcopal areas, each with an archdeaconry. This is the largest Diocese in the country and its creation in 2014 is unprecedented in the history of the Church of England. It covers an area of around 2,425 square miles with a population of around 2,642,400 people.

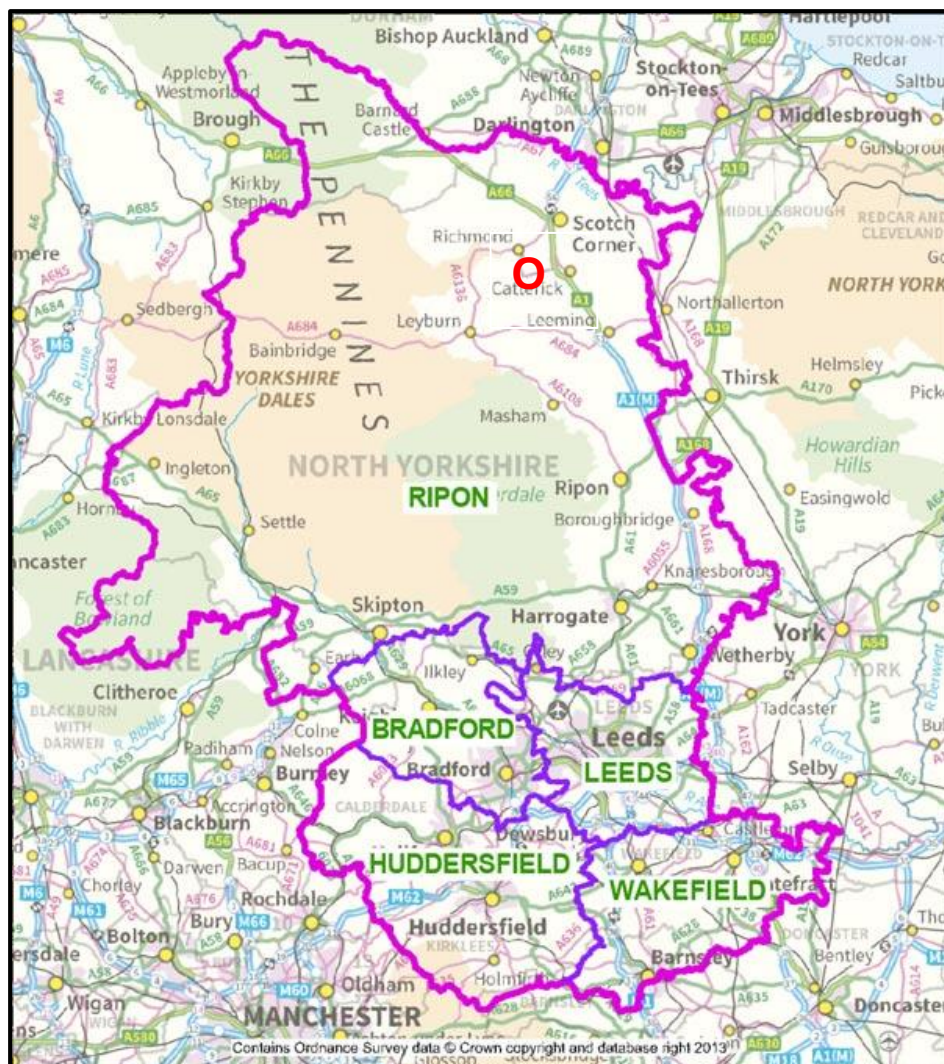
The Diocese comprises major cities (Bradford, Leeds and Wakefield), large industrial and post-industrial towns (Halifax, Huddersfield and Dewsbury), market towns (Todmorden, Harrogate, Skipton, Richmond, Ripon and Wetherby) and deeply rural areas especially in the Dales. The whole of life is here, along with all the richness, diversity, complexities, and challenges of contemporary British society. It is a stimulating environment in which to exercise ministry and develop a career.

Five area bishops (Bradford, Huddersfield, Kirkstall, Ripon and Wakefield) and five archdeacons (Bradford, Halifax, Leeds, Richmond & Craven, and Pontefract) assist the Diocesan Bishop (The Rt. Revd Nicholas Baines).

These parishes are part of the Richmond Deanery, with the Richmond and Craven Archdeaconry, under the leadership of Ripon, The Rt Revd Anna Eltringham.

The Diocese vision is about 'Christians and clergy, growing churches, transforming communities, helping to share the Good News of Jesus Christ across our Diocese'. For all appointments they are seeking clergy who have a joyful and confident faith and with a commitment to church growth both numerical and spiritual.

Diocesan map with episcopal areas



[ArcGIS - Church of England parish map](#)

Local Area

The Yorkshire Dales and the North York Moors



On the edge of the parish is the Yorkshire Dales National Park, containing beautiful scenery, geological features, attractive towns and villages and many places of historical interest including numerous ancient castles and abbeys.

Five minutes away is the A1 motorway and Scotch Corner junction, leading north towards Newcastle, Durham, and Northumberland – which have yet more to explore - waterfalls, stunning empty

beaches, Roman remains and historic Christian sites.

Southwards the A1 leads to Ripon, Harrogate, Thirsk and York. Heading east is the beautiful North Yorkshire Moors National Park, with areas of natural beauty and some quaint coastal towns and villages with delightful beaches; west will take you across the Pennines to the Lake District National Park.



Catterick Garrison

Catterick Garrison is the largest British Army garrison in the world, situated 3 miles south of Richmond, North Yorkshire, and covering more than 2,400 acres, with 20,000 acres of military training area.



The present location of the Garrison was put forward by Lt Gen Robert Baden-Powell, founder of the Scouting movement, in 1908, and in 1915 it became Catterick Camp. It served as a POW Camp at the end of WW1 and WW2 and has since then expanded considerably. There are many all arms units serving within the Garrison, which has around 2,000 married quarters and much more accommodation for single soldiers.



The Garrison has expanded greatly in recent years. Facilities within it include eight schools, libraries, Post Offices, medical centres, community centres, supermarkets, a golf club, leisure centres with swimming pools, as well as places of accommodation, shops and restaurants. There are plans for the building of a town centre area, with more recreation, retail, medical and residential accommodation, due to begin shortly.



Leisure centre and library



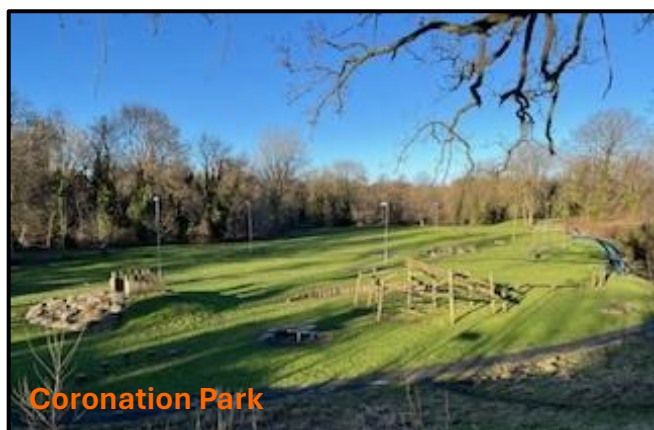
Princes Gate shops

The proximity of the A1 makes it easy for people to take employment in nearby towns and cities, as well as working rurally. There is local employment within the Garrison and also planning for a large retail designer outlet close by at Scotch Corner.

Within the parish there are various places of worship – St Joan of Arc (RC), St Aiden’s Church of Scotland and the Garrison Memorial Church. There is also a temple within the Garrison for the Gurkha soldiers and Nepalese community.

Hipswell, with Colburn and Scotton

Hipswell, Scotton and Colburn have built up and evolved because of the military growth. Within the settlement are several distinct villages, including Scotton and Hipswell, which have their own personal character.



Coronation Park

Colburn is larger and is classed as a town. Around these, the military area is interspersed by residential areas and plenty of open spaces including woodland conservation areas.

There are many green zones and places for children to play, throughout the Garrison. The Coast to Coast walk passes through the parish and within the Camp there is a delightful nature reserve with a stone circle available to visit. Easby Abbey is a short walk away alongside the River Swale, and within a short drive there are many interesting abbeys and castles.

Our closest large town is Richmond; there are other local towns and villages such as Bedale, Leyburn, Reeth and Masham, all well worth visiting.



Richmond



Richmond - our gateway to the Dales - has a history dating back to Roman times – it is just a few minutes' drive away and stands in beautiful countryside beside the River Swale.

Richmond has many amenities, shops, groups and societies, a cricket club and golf club, drama, and musical groups, and there are book, walking and music festivals during the year. There is the small Friary Hospital dealing with recuperation and palliative care.

Of note are:

- Richmond Castle, with its imposing Norman keep within the castle grounds, dates from 1070, and provides impressive views of the Swale and the town, from both the keep and a walk around the outer side of the castle walls.
- Richmond has a lovely, cobbled marketplace, with many fine Georgian and Victorian buildings and snickleways to explore. At the centre of the town is the Green Howard's Museum and the Richmond Museum.
- The delightful Georgian Theatre Royal, built in 1788, and recently restored, is the country's oldest theatre in its original form, and is itself a museum worth visiting.
- The disused Victorian railway station is a restored building with many original features. It encompasses three cinema screens, a restaurant, art galleries, dance studio and several independent shops. From here you can walk along the riverbank to the 12th century Easby Abbey.

Northallerton and Darlington

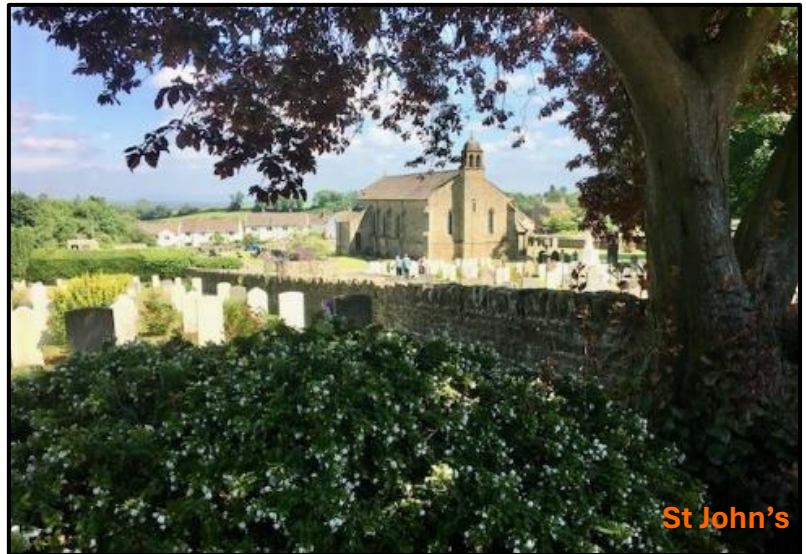
These two towns are much larger than Richmond and have plenty of shops, retail and industrial parks and markets. There are hospitals with 24-hour treatment available at Northallerton's Friarage Hospital, and the A&E departments at Darlington Memorial Hospital, and James Cook Hospital in Middlesbrough. Both Darlington and Northallerton, which is the County Town, have busy main line railway stations. There is also an authentic heritage railway, the Wensleydale Railway, which travels through the Yorkshire Dales.

Worship within the Parish

Within the parish there are two churches. Each holds a service on Sunday morning, plus a recently introduced All Age Worship service at both churches once a month during the afternoon. We are flexible and open to change to encourage growth.

St John the Evangelist

St John's is the parish church in Hipswell, previously known as Hiplewell of the Domesday Book; it was the birthplace of John Wyclif (or Wycliffe) in about 1325. His religious teachings are regarded as having paved the way to the Reformation and it was Wyclif who completed the first English translation of the Bible.



Dating from 1811, St John's is a fine Gothic Regency building. Before that there was a chapel, mentioned in documents as far back as the 1300s, so we might presume that John Wyclif worshipped there.

Originally the congregation sat in high box pews with singing led by a little band. Some of the windows were gifted by the officers and men

from Catterick Camp in memory of comrades buried in the churchyard and those who died during WWI. A thorough restoration took place in 1892, and in 1979 there was further internal modernisation.

The quinquennial report states that the building is generally in good condition and well cared for; the most pressing issue is the amount of repointing and stone replacement required.

There is a closed graveyard, maintained by the parish council. In this area there are Commonwealth War Graves, these are maintained by the Commonwealth War Grave Commission. Adjacent to the closed graveyard, there is a military cemetery and also a cemetery run by the Joint Burial Authority of Colburn, Hipswell and Scotton.



St John's aims to be a loving, welcoming church, open to the wider community, and confident in God's love and presence. It is much loved by the small congregation, which varies from between 9 to 14 each week, who care for it and enjoy decorating it for festivals.

We enjoy a mix of mainly traditional hymns with some slightly more contemporary music and we are fortunate to have live music. Sunday services usually take place at 9.30am each week, alternating between a Holy Communion and Service of the Word. Services last around an hour, and as there is no kitchen or toilet, we occasionally



visit a home in the village to chat over tea and coffee afterwards.

Beside the church is a children's playground on the village green. There is a small village hall nearby, occasionally used for village or church events. Parking is very limited within the village.

Local area of St John's

We are actively involved in supporting Hipswell Church of England Primary School, where our previous vicar served as a Governor and regularly led collective worship. The school is opposite the church, and classes occasionally visit the church for instruction and worship.

The village is on the edge of the Garrison, and there are public footpaths to enjoy and explore around the surrounding fields. Within the village there is a large Georgian hall with a farm; several late Georgian stone houses; an estate and an area of sheltered housing with elderly and disabled people living in bungalows. A new estate has recently been built close to the village, there are several others within the Garrison. Some of our congregation come from the Scotton area.



St Cuthbert's

St Cuthbert's in Colburn was built in 1957 and designed by Sir Albert Richardson who was a leading architect, teacher, and writer during the first half of the 20th century. He was Professor of Architecture at University College London, and a President of the Royal Academy.

The interior recalls the hull of an upturned boat, and the east end is dominated by a tapestry of Christ in Glory, worked in applique by David Holt.



The friendly, welcoming services at St Cuthbert's usually alternate weekly between Holy Communion and a Service of the Word; on average, 20 - 30 people worship here on Sundays. There is an All Age Worship once a month at 4pm – this is a new service introduced after the departure

of our previous vicar. There is some parking space and gardens, and the services are followed by refreshments in the St Cuthbert's Community Hall, adjacent to the church.

The recent quinquennial report, of March 2022, stated that generally the church is in reasonable condition. The decoration is looking tired in places and the lighting would benefit from improvement. The hanging reredos should be assessed by a specialist conservator. There are a number of fractures throughout the church which should be monitored. The roof is problematic and needs replacing. Loose slabs visible and under carpet, need securing and carpets in places need to be replaced.

The St Cuthbert's Community Hall

This is a charming hall, built just beside St Cuthbert's Church, which is frequently used by our churches for fundraising, social events and meetings, along with the Fijian and local community. It brings in much needed funds and is let out regularly to various groups and individuals. There is disabled access, a well equipped kitchen, parish office, main hall, and meeting room, with Wi-Fi, projector and screen available for hire, plus male, female and disabled toilets.



Local area of St Cuthbert's



The town of Colburn, where St Cuthbert's is situated, is a civil parish and electoral ward in North Yorkshire, 2 miles west of Catterick. It had a population of 4,860 at the 2011 census, rising from 3,606 in 2001.

The town takes its name from the first settlers along the stream Colburn Beck. It means 'cold stream,' 'coal stream' or 'cool, black stream' and is a mixture of Old English and Old Norse. A 'burn' refers to a valley eroded by flowing water.

The Colburn (Coburn) family is widespread around the world, including Edward Colburn, great grandfather of Reuben Colburn, who went to America in 1635 on the ship 'Defence' part of the Puritan Great Migration of the 1630s. Colburn Hall, a grade II listed building is located on the outskirts of the old village, along with a grade I listed courthouse dating back to the 1300s.

The primary shopping area, known as the Broadway precinct, includes a Co-op convenience store, as well as several independent businesses and the community library. Colburn Business Park was opened in 2008.



Services within the Parish



All age Christingle, St John's

Services take place on Sundays at both churches, at 9:30 am or 11:00am, alternatively Holy Communion at one church and Service of the Word at the other.

During our Vacancy we have developed an All Age Worship at both churches, taking place at 4:00pm on a Sunday afternoon and these are scheduled once a month at each church. These are lay-led and seem to be growing in popularity.

St Cuthbert's Church and the Community Hall are used fairly regularly by the Fijian Christian community.



Remembrance Sunday



The Remembrance Sunday service is held at St. John's. Over the last few years this has been an outdoor service centred around the war memorial in the churchyard. It is always very well attended by locals and various organisations.



A military bugler plays the Last Post and collections go to The Royal British Legion or other service charities.



Ecumenical Events

Before our vacancy we enjoyed monthly lay-led evening services with King's Church, plus other events including our joint 'pop up' Nativity Service.

Parish Activities

- **Partnerships**

Within the Garrison there is potential to work alongside others. There are opportunities to work inter-faith and for forming partnerships - these might be, for example, with the military padres and Army Chaplain, other local churches and non-Christian organisations. An active group works from within Colburn Village Hall, including a food bank and with links to refugee organisations, which might offer additional opportunities to reach out locally.

- **Pastoral Care in the Community**

We have a small Pastoral Team. The co-ordinator has completed the Lay Pastoral Ministry Course and had a working agreement with the last Incumbent. Two other members of the team have completed the Pastoral Assistant course, and the fourth member is a qualified counsellor and is just about to undertake pastoral training.

The main activities undertaken by the Pastoral Team are the running and further development of the Wellbeing Café, visiting nursing homes and facilitating worship once a month.

- **Wellbeing Café**

Every fortnight on a Monday morning, a Wellbeing Café is held in St Cuthbert's Community Hall, which is well attended by members of the parish churches and local residents. Prayer is available with members of the Pastoral Team, for anyone who requests it. Activities are offered, however most people who attend enjoy the chat and company of one another.



Wellbeing Café, St Cuthbert's

- **Prayer Group**



Prayer ministry, St Cuthbert's

The prayer group regularly meets on a Tuesday evening in the hall. Prayer Ministry is also available after the 11am service at St Cuthbert's.



Alpha, St Cuthbert's

- **Alpha and The Bible Course**

We have held several Alpha courses here, as well as The Bible Society's Bible Course and Lent groups.

Fundraising and Other Activities

Mission

The churches support a husband and wife dental team based in Liberia – mission partners who visit every few years to update the congregations on their life and work overseas. We also support and fundraise for other local and overseas projects such as Tearfund and our local food bank, and emergency disaster relief.



The Colburn Reunion and Gathering

Every year Colburn village hosts a Gathering in the summer and St Cuthbert's Church is the venue for a memory associated flower festival and Service of Thanksgiving.



A small but enthusiastic group form the fundraising committee. They meet regularly to arrange events and all money raised is shared between the two churches.



Festival and fellowship Harvest lunch

Harvest thanksgiving services are held at both churches during autumn with donations going to home or world missions. After the St. John's service there is usually a fellowship lunch held in the church.

Summer Fun Day

During the summer St Cuthbert's holds a family fun day, which is a free event for the local residents. Refreshments are served and there are many different activities both inside and outside in the gardens.

Monthly quiz

A popular fundraising quiz is held monthly, with a different quizmaster each month.

Veteran's Art Club

On Tuesday mornings during term time a Veteran's Art Club meets in the hall, open to anyone. In a calm and relaxed space, the members experience and develop a variety of artistic styles and skills, with a teacher to guide them.



Art Club at St Cuthbert's Hall

Community Garden Scheme

Recently, led by our previous vicar, St Cuthbert's has developed, with the aid of many volunteers, a Community Garden within its spacious grounds. There are several raised beds for growing flowers, fruit and vegetables. This year we intend to install a greenhouse to extend our growing season.



Volunteers in the Community Garden



Meet Some of the Team



Churchwardens, Marie and Pauline



Austin our Treasurer



Peter our LLM



The PCC

The Vicarage

The Vicarage is a spacious detached family house, with a side gate leading through to St Cuthbert's Church. It comprises an entrance hall, inner hall, lounge, dining room, study, WC, kitchen, utility room, 4 bedrooms, bathroom with separate WC, garage, driveway, front and rear gardens, gas fired central heating and UPVC double glazing.



Local Schools

Hipswell Church of England Primary School is within the village (there are several other primary schools within the parish). The previous vicar had a good relationship with the school, where he was a Governor and regularly led their Collective Worship. Their vision is to 'Live generously and graciously towards others, the way God lives towards us' (Matthew 5:48).

There are three secondary schools close by, one of which is in Hipswell village, two are located in Richmond. The majority of children who travel to Richmond use school buses which pick up locally. Generally, children attending Risedale School walk or travel to school by car.

- Risedale School
(Secondary): <https://www.risedale.org.uk>
- St Francis Xavier, also in Richmond, is a joint Roman Catholic and Church of England school: <https://www.sfxschool.org.uk>
- Richmond School & Sixth Form College: <https://www.richmondschool.net>



Within the area there are many other nursery, preschool and primary schools, some of which specialise in additional needs.



- Hipswell Church of England Primary School: <http://hipswell.n-yorks.sch.uk/>
- Colburn Primary School: <https://www.colburn.n-yorks.sch.uk>
- Le Cateau Community Primary School: <https://www.lecateauprimary.co.uk>
- Cambrai Primary School: <https://www.cambraiprimaryschool.co.uk>
- Carnagill Primary School: <https://www.carnagill.dalesmat.org>
- Wavell Junior School: <http://www.wavell-jun.n-yorks.sch.uk>

Further education facilities are available in Darlington.

Safeguarding

We are committed to Safeguarding Children, Young People, Victims/Perpetrators of Domestic Abuse and Vulnerable Adults. Hipswell Parochial Church Council (PCC) has adopted the Church of England's policy and best practice on Safeguarding.

We appointed a Parish Safeguarding Officer (PSO) in 2017, who ensures the correct notices and documents are displayed in both churches, the hall, on our website and pew sheets. Safeguarding is an agenda item at each PCC meeting. All PCC members and volunteers are required to complete the necessary Safeguarding and Domestic Abuse online courses from the Church of England.

Thank you

Thank you very much for reading this document, we hope that it provides an insight into who we are and life here within the Garrison. We really love our parish. There is so much we would like to do to grow our ministry here. In particular, we hope to attract more people from within the area to join with us, however we do need the direction and vision of an inspirational leader.

We are praying for someone who is able to bring the church families and the wider communities together, someone with a desire for church growth who is able to engage with young families in particular. We hope you will think carefully and prayerfully about whether this would be a suitable position for you, and whether you might like to come and join us. We very much look forward to supporting, worshiping and working with our new incumbent, and we hope that this parish profile will be helpful to you as you discern God's will for your future.

Amen