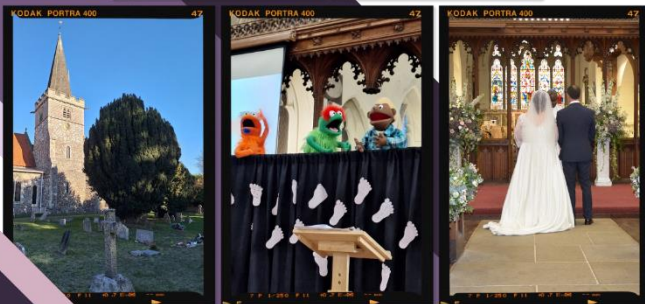


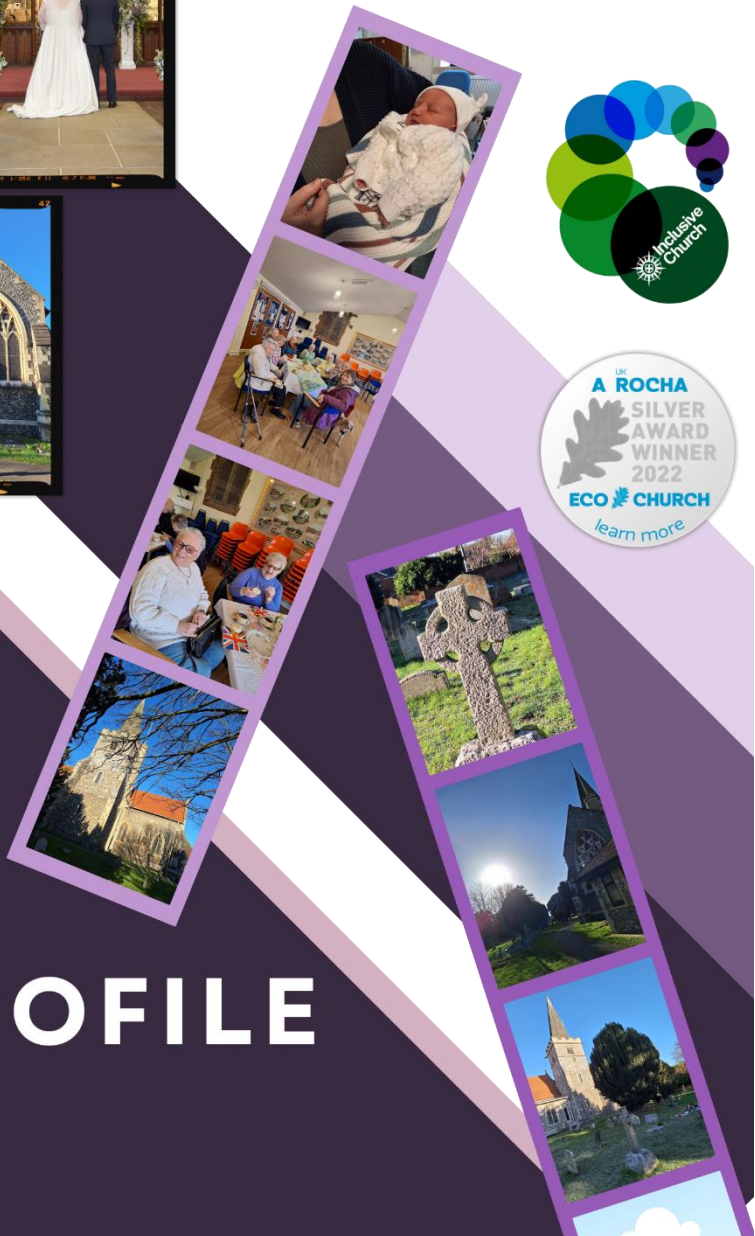


**DIOCESE of OXFORD**



We look forward to welcoming a new Vicar to our wonderful community

**PARISH PROFILE**



## Contents

Foreword from the Associate Archdeacon .....	3
Desired characteristics of our new Vicar .....	4
What kind of leadership are we looking for?.....	4
Support Package.....	4
Mission Action Plan.....	5
Our People .....	7
Personal Stories.....	8
Church Groups.....	14
Social & Fundraising .....	15
Our Community Mission .....	17
St Peter’s School.....	17
Care & Share .....	18
Communion Café .....	19
Wednesday Welcome .....	19
Lighthouse Burnham .....	20
Our buildings .....	21
History .....	21
Church Maintenance .....	23
Cornerstone .....	23
Churchyards.....	24
Vicarage.....	25
Burnham Village.....	26
Diocese of Oxford.....	28
A more Christ-like Church .....	28
Deanery of Burnham and Slough .....	30
Churches Together in Burnham and Taplow.....	31
Appendices .....	31
Services .....	31
Person specification .....	32
Role description.....	34
Church statistics .....	40
Map of The Ecclesiastical Parish of St Peter.....	41
Finances.....	42

## Foreword from the Associate Archdeacon

As we prepare for a general election, it is of note that a previous Prime Minister is laid to rest within St Peter’s; however, it says much for the vibrancy of this place that such a detail is a footnote, not a headline.

With the Eucharist as the primary pillar of ministry and mission in this single church parish, any Priest fortunate enough to serve at the altar here will know the embrace not only of the congregation, but also the benefits of a eucharistic tradition that is lived and loved.



To this extent, there is a gathered quality to the worship, but this amplifies – without detracting – from the parish facing focus of their shared life.

With exceptional points of contact with young and old alike, the opportunities to develop fresh discipleship pathways with those the church encounters each week is of significant potential. This is doubly so with the occasional offices, with Burnham very much inhabiting that civic church role, albeit in a tightly defined catchment.

With gifted and open-hearted laity who are willing to serve the place alongside the priest and an increasing number of clergy colleagues locally, St Peter’s is a place where well-being and sustainable ministry are not distant aspirations, but genuinely attainable.

There has been a breadth of legacies bequeathed by previous incumbents – including the current Bishop of Reading – which any new incumbent will need to attend to with pastoral warmth early in their tenure. This is held within the second and third pillars of this lovely church family, namely their governance and their fellowship, both of which are great strengths.

As ever, the new Priest will be committed to the diocesan vision of becoming a more Christ-like Church for the sake of God’s World – contemplative, compassionate and courageous – and to model and enable a flourishing ministry, for all, in line with the diocesan work in this area.

I commend this profile to you and I would welcome conversations about the role with interested candidates.

Revd Canon Chris Bull

## Desired characteristics of our new Vicar

We asked our congregation and community to tell us three words which described what they considered to be important characteristics in the individual who could fill the role of incumbent at St Peter’s.

We’ve got quite a list:



## What kind of leadership are we looking for?

St Peter’s has a well-defined Mission Action Plan, and we are actively trying to deliver it to the best of our ability.

We are looking for an individual who can re-build the congregation to pre-covid levels and support us as we strive to achieve our vision.



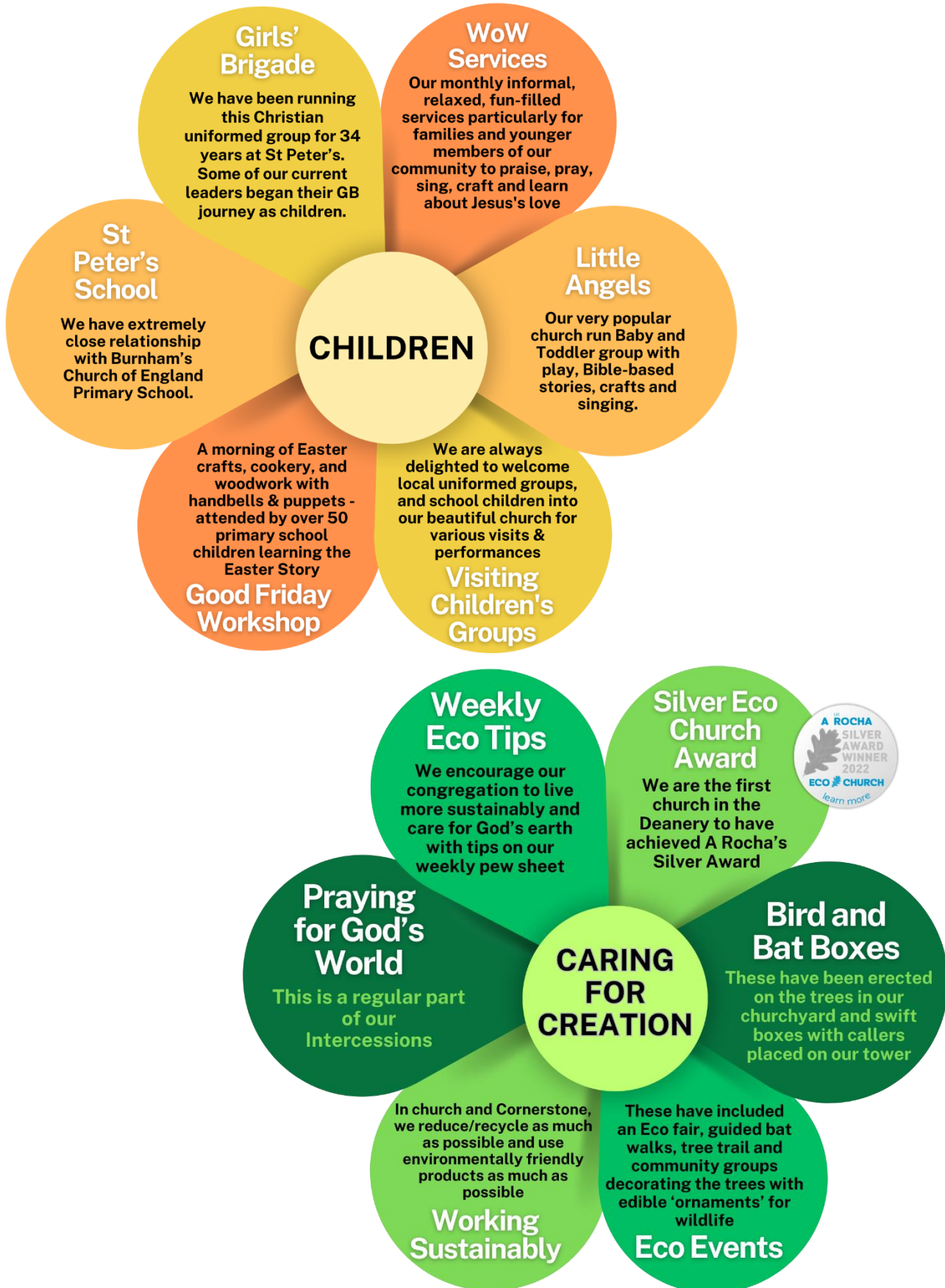
## Support Package

St Peter’s offers you the following support package:

- Two funded retreats per annum.
- An ‘on site’ Parish Administrator working 15 hours Monday to Friday a.m.
- A Ministry Team made up of a retired Priest with PTO, a Licensed Lay Minister, and a Licensed Lay Preacher.
- A team for our children’s monthly WoW service.
- A Pastoral Care team.
- Cornerstone volunteer team.
- Monthly review meeting with the Churchwardens.



# Mission Action Plan







## Our People

We are a Eucharistically centred, warm and vibrant church community spanning all generations. We are a member of Inclusive Church, and this is reflected in our congregation.

Our church family is an active and visible presence in the heart of the Burnham community; strong on fellowship, social action, environmental awareness and celebrating God’s love with those around us.

Our services offer a range of worship with music playing a major part. We are blessed with a talented organist, strong well-led choir, Keynotes music group, tower and hand bell groups.

We believe that our church family is welcoming and inviting, and we reflect this through social and fellowship events which take place throughout the year, many of which raise funds to support St Peter’s.

We have previously had Bible study and prayer groups would like to improve in this area to help us be more contemplative and grow in our faith and spirituality together. In particular, we would like to consider creative ways of examining scripture.

Our warm and friendly church is a busy place, we have a compassionate and caring ethos which is supported by a wide variety of groups and activities.

We are blessed with a strong Ministry Team which supports our worship, ministers to local retirement homes, visits those who are sick and housebound and offers home communion when appropriate.



"HOW GOOD AND PLEASANT IT IS WHEN GOD'S PEOPLE LIVE TOGETHER IN UNITY!" – PSALM 133:1

## Personal Stories

I have been working as the Parish Administrator, based in Cornerstone, since 2019, and can honestly say it is the best job ever.

My main duties are to produce the weekly Pew Leaflet and answer and field incoming email and phone queries. We also have a steady stream of people coming into the office with questions, suggestions or just even for a chat.

Working in the office I have got to know members of our congregation and community, local clergy and others in the deanery, and staff at Church House.

Although I work mostly autonomously, I support the churchwardens, Cornerstone Coordinator and treasurer, and also worked very closely with our previous incumbent.

I particularly enjoy chatting to visitors, creating posters and drinking fruit tea. Filing, invoicing and organising the rotas are not my favourite parts of the job, however I do carry these out with a smile, and not too much complaining!



**Pam**  
**Parish Administrator**



**Cliff**  
**St Peter's Handbell Society &  
Tower Bell Ringers**

What's not to like? The best ring of 8 in the Branch (unless Hughenden is granted the title) and, possibly, the only 5 chromatic octaves of handbells in the county.

Having previously cycled between churches, in Sutton, to keep up our ringing, Angela and I settled at St. Peter's in 1959, though living in St. Andrew's parish.

Many (very many) children and many adults enjoyed making music with us on handbells and in the tower, as has been the practice since the 17th century. Long may bells ring out over and around Burnham.



The country of Lesotho and Beautiful Gate Care Centre for Abandoned and Orphaned Children stole my heart way back in 2007 when I first visited on a mission trip.

I always say I do not know how after visiting Beautiful Gate for a day I became their UK rep, but I do believe that God had a hand in it somewhere. I have spoken to schools, churches, community groups and I have even been to speak in a church in Belgium fundraising for them.



**Jenny**  
**Beautiful Gate**

I have been taking teams and individuals out there since 2012. I am pretty sure that people’s lives have been changed after spending time working alongside the house mothers and maintenance men who keep Beautiful Gate running efficiently and with Christian love for all whom they encounter.

Life is hard in Lesotho, but God is definitely at work there. As long as He wants me to be part of His work in this beautiful country, then I will continue to go and to take others to see first-hand how hard life is for so many people compared to what we are used to.

We go with a desire to help and to give but we always feel that we come home richer for our experiences.



**Brian**  
**Organist and Choirmaster**

I have been Organist and Choirmaster at St. Peter’s, Burnham for 35 years, organising the music for the 10:00 am Sung Eucharist on three of the four Sundays in each month.

Music in the liturgy is for me very important, as it forms the centre of the worship week by week. The Choir members enjoy their role, leading the congregational singing, working on an anthem during the communion, and performing on special occasions such as Christmas and Easter

Conceived as a PTO chaplaincy during the pandemic, with its first service beginning in April 2022, Communion Café meets on the second Monday morning each month from 10:15am-11.30am.

It had the aim to re-establish a sense of belonging to the church community gathered around the Eucharist, in awareness of the spiritual needs of our frail, aged or otherwise incapacitated congregation members. This included older people who have difficulties in accessing regular Sunday worship and maintaining their church friendships.

Our people enjoy being ‘church together’ and exploring different aspects of their faith in a comfortable, seated and sociable location - within the Christian environment of our church room - whilst continuing to be a contributing part of the bigger church.

Meeting old friends, mutual support and a warm welcome from the Communion Café team has created a joyful place, especially in the post service café social time for our 25 or so members.



**Revd Sue Smith**  
**Communion Café**

I am honoured to have worked at Burnham Care and Share since 2022, initially as a parish listener and presently as the St Peter’s representative, working alongside our partner organisations to support new and existing clients access our village foodbank.

As a member of the PCC, I ensure that information is communicated and actioned as necessary. I recognise that ending hunger is more than just supplying food; aims and hopes are providing compassionate and practical support to tackle root causes, ultimately building clients personal resilience against requiring long term support.

I care about others and hope that even my small contribution, can make a difference to our neighbours in greatest need.



**Michaela**  
**Care and Share**





Having grown up in a Girls Brigade company, I started 1st Burnham at St Peter’s back in 1990.

We have had hundreds of girls pass through our ranks and we pray that we plant seeds of faith that will be reaped in due course.

Our aim is to help girls live life to the full and our motto sums up all that we do -  
‘Seek, Serve and Follow Christ’.



**Jenny**  
**Girls Brigade**

A few months ago we entered a national competition in which we were asked to produce posters about what GB meant to us. Here are some of the things that the girls said:





## Parish Profile – St Peter’s Church, Burnham



**Vickie**  
**Wednesday Welcome**

When Wednesday Welcome started, we hoped it would be a place for congregation and villagers to pop into Cornerstone, enjoy some refreshments, chat with friends and also an excellent opportunity for new visitors to look around in a relaxed, convivial atmosphere.

Success!

It has now blossomed into an enjoyable part of the church week - for all of us involved.

Our regular visitors feel like a community who look out for each other in the spirit of Christian friendship; where everyone can make a difference to someone’s day, by offering their time, sharing a laugh and a nice cup of tea together - I love being a part of it!



**Michelle**  
**Puppets 4 All**  
**@ St Peters**

P4A was formed in March 2010 and we usually have around 10 members. Our mission is to bring God’s joy into people’s lives, whether they are young or older.

Our services, which are aimed at the younger members of our community, are lively, fun and interactive.

We aim to tell God’s teachings in a way which is relevant to their life experience, whilst making a church environment welcoming and fun for both the children and their parents.

One of the things we like best is getting out into the local community.

We love visiting other churches and community groups and we are always busy!

We often provide Bible teaching support to Lighthouse Burnham and Antz Kidz (a breakfast club on the Britwell Estate).

We visit many residential homes with the puppets and sing along to songs from the past, again we have a lot of fun making these visual as well as relevant to the ages we are involved with.



There is a great deal of joy in listening to people being happy. I am very thankful that I am involved in this versatile ministry. (In fact, I think it is just about the funnest Ministry there is!)



We've attended the monthly WoW service for couple of years now. It is an important date in our family calendar.

We love the fact that we can learn, and celebrate our faith as a family. The service is always tailored really well to engage with the young mind, to ensure the monthly message is taught through fun and at a level that children understand.



Having 3 children, it's great that we can all join in together. There is something for everyone. It is a safe & friendly environment where children can be themselves without judgement.

The service brings a real sense of community, and it makes us feel part of something special.



We've made new friends and feel part of a new kind of family, our church family.

**Gemma**  
**WoW Congregation**  
**(pictured with her family)**



## Church Groups

**Choir** - Led by organist Brian Henry, our choir leads the congregation in musical celebration each week with a range of traditional and contemporary hymns and uplifting songs of praise.

**Flower Arrangers** - Over the year, the flower team enhances our church with an array of seasonal blooms and foliage to remind us of the beauty in God’s creation.

**Girls’ Brigade** - 1st Burnham Company of the well-established Christian organisation for girls and young women; making things, creating friendships, developing new skills, and exploring some of the big questions of life, helping members discover their potential in supportive and empowering ways.

**Keynotes** - An informal music group for WoW services, much enjoyed by all who hear them play.

**Listening Ministry** - Since 2011, a team trained with listening skills has been available within St Peters and more recently at Care & Share, for anyone who needs to offload their personal situation in a caring and confidential setting.

**Little Angels** - The very popular Baby and Toddler Group for parents, carers and their children; offering fun, refreshments, Bible stories, crafts and songs.

**Pastoral Care** - Visits within the community, offering a friendly ear, to sit and listen, pray together or just be there - the team is available to all who need it with home and hospital visits.

**Puppets 4 All** - Our much-loved puppet ministry features at WoW services and Christingle; and they also visit local care homes and organisations in the community - delighting new audiences with their lively and fun performances.

**St Peter’s Gore Ringers** - The Friday handbell group of many years standing, which partners with St Peter’s on occasion, visiting care homes and performing at seasonal community events.

**St Peter’s Handbells** - Our handbell ringing enthusiasts who actively show that ringing is timeless and can be enjoyed by everyone.

**Tower Bells** - Meeting each week to practise, the ringers herald the start of the Sunday 10am services and feature at many weddings and events throughout the year.

**Wednesday Welcome** - Open since April 2023 to coincide with market day, the volunteers offer refreshments to all visitors to the church in a relaxed and friendly setting.



## Social & Fundraising

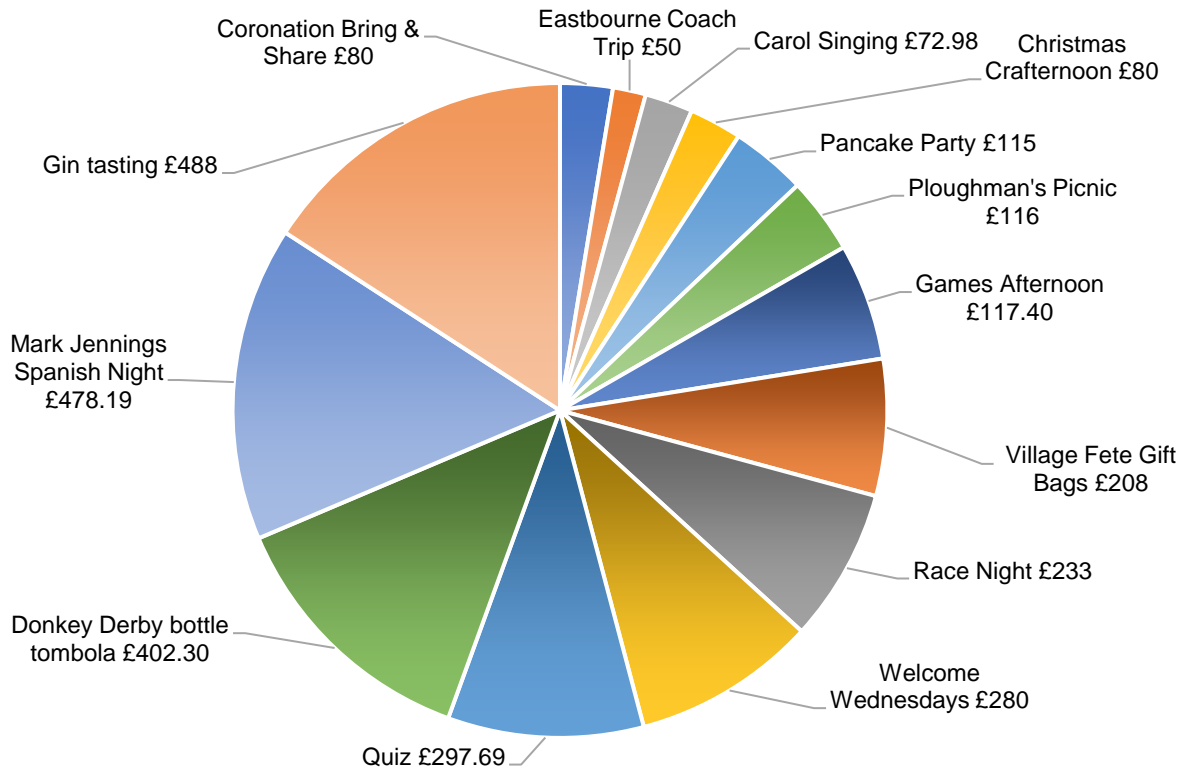
We need to raise circa £135,000 a year to cover our commitments. In addition to Planned Giving, we achieve this via our active social and fundraising group which brings us together in fellowship, invites in the community, as well as raising much-needed funds for the church.

Events have included:

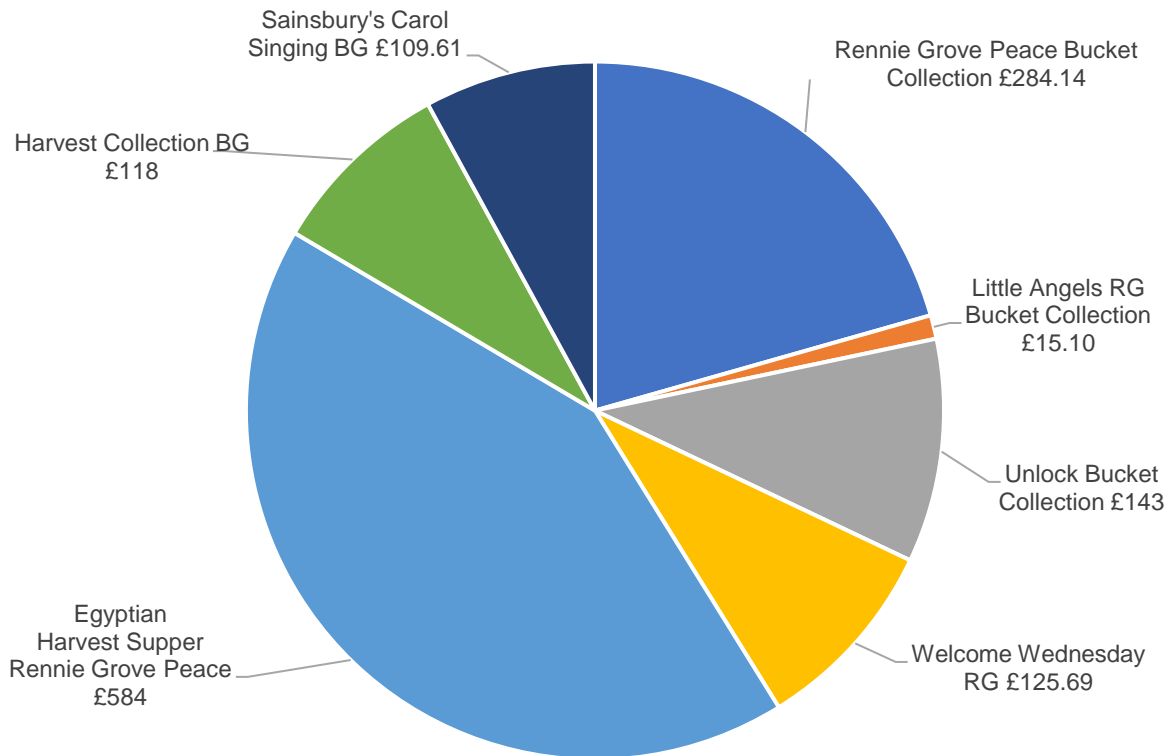
- Annual Harvest Supper
- Christmas carol singing in the community
- Christmas Fayre
- Coach trips to the seaside
- Cream Teas
- Gin Tasting
- Magic Show
- Race Nights
- Shrove Tuesday Pancake Party
- Stalls at Community Events
- Tea Tasting
- Quiz Nights

We aim to cater for all ages & tastes and we welcome & encourage members of other churches and the community to come to enjoy our events and activities.

### St Peter's Fundraising for Mission and Maintenance 2023



### St Peter's Fundraising Outward Giving 2023



## Our Community Mission

Our church buildings are well used by different parts of the community.

This includes concerts and performances by Friendly Bombs<sup>1</sup>, Burnham Grammar School, St Peter’s School and Burnham Concert Band.

Many of our church groups go out into the community, including:

- Choir
- Girls’ Brigade
- Puppets 4 All
- Pastoral Care
- St Peter’s Gore Ringers
- St Peter’s Handbell Group

The church supports Lighthouse Burnham<sup>2</sup> with many members of our congregation volunteering to help at the week-long Christian holiday club with pre-Covid attendance of over 700 local children plus 350+ adult and teenage helpers.

We partner with local Tesco stores in the FareShare<sup>3</sup> initiative combating food waste & hunger by acting as a distribution point for surplus food.

There are many community groups who use Cornerstone for their activities;

- Angela Terrey Dance Academy
- Art Group
- Friendly Bombs Theatre Company
- Hartbeeps
- Simply Walk

We provide a trustee to the Well at Lent Rise which is a local Christian based multi-generational charity.

## St Peter’s School

We have an incredibly special relationship with St Peter’s Church of England School.

From Little Fishes (Pre-School) right up to Year 6, the school, and the church work together with a shared Christian vision.

The school’s caring ethos and social awareness links perfectly into our MAP. The school community regularly collects food for Care & Share, and the foodbank together with Beautiful Gate Orphanage are two of the organisations the children have chosen as their nominated charities. Little Fishes decorated a tree in the churchyard with edible ornaments for birds, as part of our Caring for Creation

---

<sup>1</sup> <https://www.friendlybombs.co.uk/about.html>

<sup>2</sup> <https://lighthousecentral.org/lighthouses/burnham/about>

<sup>3</sup> <https://fareshare.org.uk/>



initiative. Parents, children and even staff regularly attend our WoW services, our very popular Christingle, and help with and attend our annual Good Friday Workshop.

Our previous incumbent was a very familiar face to the children and staff and went into the school frequently to support and work with the children through assemblies and classroom teaching. The staff and pupils consider St Peter’s their church, and often pop in to support their learning, as well as celebrating the Christian festivals, and beginning and end of the school year. It was on one class visit that the idea to create a memorial to Sir William Grenville began.

Puppets 4 All leads assemblies at the school and members of the church regularly visit to listen to the children read. Two members of our congregation are Foundation Governors.

A local newspaper, the Maidenhead Advertiser, reported that ‘*The school had its SIAMS inspection in December 2023 which was outstanding. The Diocesan inspectors described the school as ‘inspirational’ and ‘a vibrant, and exciting learning community’ and in a long list of strengths recognised by those inspectors, **praise was given to the school’s ‘ambitious Christian vision’ and its strong links with the nearby St Peter’s Church***’<sup>4</sup>

It is extremely important that our new vicar is eager to continue this unique relationship with our church school.

## Care & Share

In July 2020 Care and Share opened in The Chocolate Shop in the High Street with 10 clients. It was a partnership between St Peter’s Church and Burnham Health Promotion Trust, under the umbrella of Maidenhead Foodshare. In November 2021 due to lack of storage space, Care and Share moved to its present site at Burnham Park Hall.

It currently averages 80/100 clients over two weekly sessions with approximately 50 bags of food going out each week. 1124 vouchers and 91 emergency bags were provided for over 3,100 individuals between April ‘23 to March ‘24.

There is a team of 25 volunteers, many from St Peter’s, which includes 2 duty managers, listeners, drivers and stockroom staff. Other staff are employed by BHPT.

The scheme is supported by individuals, schools, churches, businesses, and other organisations with both financial and food donations. Grants from the Local Authority have made up shortfalls in food requirements and have enabled the purchase of a storage container which was delivered in January 2024.

Promotion of fundraising details, publicising of events, achievements and details of needs/specific requests are posted through the church pew leaflet and shared through social media platforms.

Care and Share is hoping for independence from Maidenhead Foodshare, which currently holds Burnham Care & Share funds within its financial portfolio. It aims to

---

<sup>4</sup> [School reports and feedback](#), [SIAMS report](#)

achieve this by becoming an independent charity. A working party is to be set up, to oversee the whole project, prior to the charity application.

## **Communion Café**

Communion Café aims to be a ‘place’ both in time and physical space where older members of the St. Peter’s congregation can share the fellowship of a monthly cafe style Holy Communion followed by coffee and conversation time, promoting the building of mutual support and companionship whilst giving the opportunity to explore and meet the spiritual needs of older members.

We also try to ‘keep in touch’ with absent or lapsed members (whether following on from the lockdown or for other reasons) through the Service of Holy Communion then sharing refreshments afterwards, enabling social interaction in a distinctly Christian environment, which is not always easily accessible for older persons.

Together, we celebrate a sense of belonging to a gathered community once again, finding the joy of reconnecting with old friends and making new ones along the way; all based around our faith, the sharing of the Eucharist with an awareness and respect to the needs of aging congregation members in a joyful and relaxed atmosphere.

## **Wednesday Welcome**

With congregants coming in for refreshment after the Eucharist service, villagers who visit Burnham market and then drop in for a chat on their travels or even visiting tourists who see that the church is open and decide to look around and relax in Cornerstone afterwards, Wednesday Welcome has truly blossomed into a much-enjoyed part of our church week.

The group of volunteers from our congregation offer beverages & light refreshments (donations welcome if able to do so) and extend a friendly fellowship and warm welcome to all.

As a result, many people have got to know each other much better over the last year; it has empowered many villagers to take that first step over the threshold and see that St Peter’s is a relaxed, friendly and welcoming place. Meeting up with friends and making new ones, or just chilling, this is our community in action.

## Lighthouse Burnham

Lighthouse is an annual week-long Christian holiday club for children of any or no faith, run by local churches in the summer holidays. It is the biggest mission event in Burnham and is a fantastic example of the churches and community working together to spread God’s word.

Lighthouse Burnham is part of Lighthouse Central<sup>5</sup> which supports Lighthouses in 15 different locations. Today it is attended in total by around 5000 children with 3000 volunteers of all ages, 1200 of which are teenagers.

After a 4-year hiatus due to Covid and difficulties in finding a new site, Lighthouse Burnham is excited to be running again in 2024.

Our church members have been involved in puppeting, fundraising, craft, sound, refreshments, site & security, worship, creche, first aid, special needs, office, prayer team, Age Group Teachers, Lighthouse keepers and Lamplighters. And our whole congregation helped in collecting over 700 toilet roll tubes which the children transformed into spiders!

Although this is historically a lay led activity local clergy are encouraged to play an active role and attend when they can during the week.

Indeed, one of the most popular activities is “Grill A Vicar” when the older children are invited to quiz the clergy.

Lighthouse provides a week of fun and fellowship for all ages and has encouraged new families to join the family of St Peter’s.



<sup>5</sup> <https://lighthousecentral.org/>



## Our buildings

### History



St Peter's Church has been at the centre of village life for well over a thousand years.

Burnham is listed in the Domesday Book of 1086 and, with Desborough and Stoke, is part of the Chiltern Hundreds.

## Parish Profile – St Peter’s Church, Burnham

The present church was built between 1154 and 1202, although there was an earlier Anglo-Saxon church here before that, and probably an even older Romano-British building which is believed to have dated from about 500.

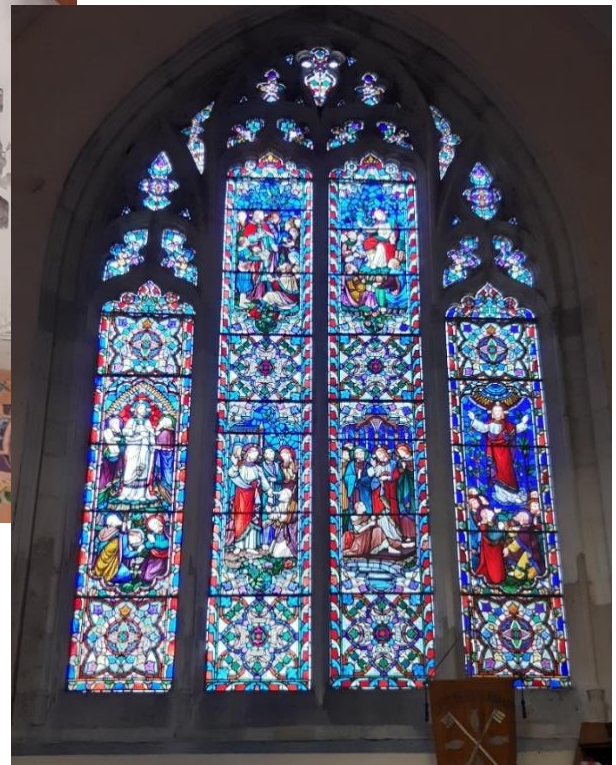
Various additions and alterations have been made over the years, including two major restorations during the 19<sup>th</sup> century. In the second of these the tower was extended, a spire was added, and two extra bells were added to the existing six to make a full peal of eight in honour of Queen Victoria’s Diamond Jubilee.

The last major work was the demolition of the Victorian vestry to make way for Cornerstone which was built in 1986.

The North Transept was once a private pew reserved for members of the Dropmore family with a private door which is now the ramped entrance to Cornerstone. The beautiful window was installed as a memorial to Lord William Grenville by his wife, Lady Anne Grenville. He was Prime Minister to King George III in 1806-7, during his ministry the Slave Trade Act 1807, which outlawed slavery within the British Empire, was passed. This was the first step towards the ending of the Trans-Atlantic slave trade.

He and his family are buried in a vault under the floor. Children from St Peter’s School made displays and a memorial to Lord Grenville. With the current interest in the history of the slave trade we feel that there are opportunities to reach out to other schools and organisations in the area.

A more complete history of our church can be found on our website.<sup>6</sup>



<sup>6</sup> <https://www.stpetersburnham.org/history>



## Church Maintenance

St. Peter’s Church is a Grade 2\* listed building situated close to the centre of the village.

It is a very beautiful building and attracts a large number of families who use it for weddings, baptisms and funerals. This gives us many opportunities to touch their lives through Christ. Several regular members of our church family had their first contact when they came to be married or have a child baptised.



The church is generally in a good state of repair; however it is an 800 year old building and as such it requires continuous maintenance. Our next Quinquennial inspection is due in 2026.

We are in the process of upgrading our sound system.

A major project for the repair of the Grenville window will need to be undertaken in the near future to repair decaying stonework.

We are blessed with a generous endowment which covers most of the costs of building maintenance.

## Cornerstone

Cornerstone is an extension added to St Peter’s Church in 1986.

It comprises the parish office, a small meeting room, two halls with a movable partition to create a single larger space, a kitchen and two lavatories.

The halls are hired to various community groups, as well as for private functions, providing a valuable source of income.

Cornerstone is also used for our own groups, PCC meetings, and social events.



During the day, it provides a meeting place and information centre for the local community through our parish office. The church is open for people to look around and have some quiet time for prayer or reflection. On Wednesdays each week on market day, Cornerstone is open, and many parishioners and visitors pop in to enjoy the refreshments and fellowship our volunteers offer to everyone.

## Churchyards

There are two churchyards attached to St Peter’s Church, the main churchyard in which the church is sited, and an annex to the north-west. The path through the main churchyard is regularly used by many from the community and offers a mission opportunity.

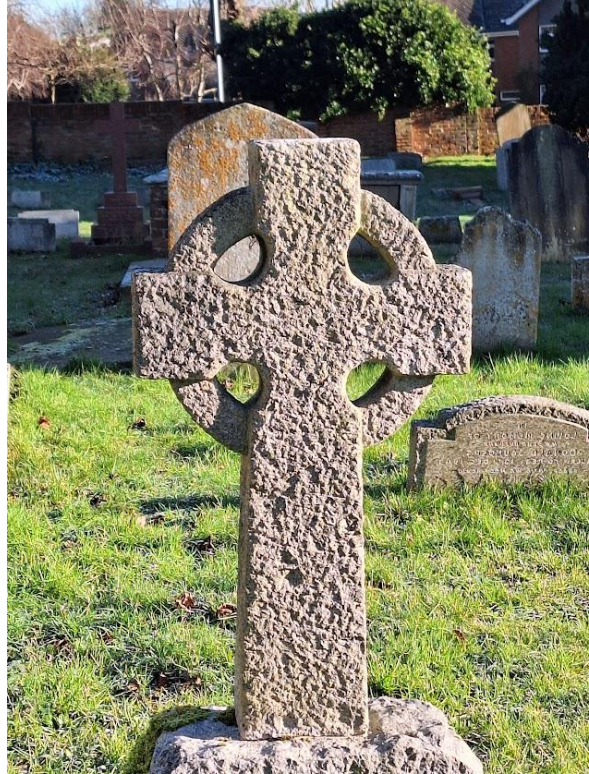
Both churchyards have been closed to burials for several years, but interment of ashes may take place at the discretion of the incumbent.

Grass cutting in both areas is carried out by the local authorities.

We have two members who look after the flower bed adjacent to the south door of the church. The Garden of Remembrance in the northwest corner of the church yard is maintained by the Sexton.

We currently have a badger sett in the Rectory garden and churchyard which is both a blessing and a challenge!

We are working with Berks, Bucks and Oxon Wildlife Trust and Natural England, and have applied for a faculty to cordon off the area to both protect the badgers and to prevent the public from falling on uneven ground.





## Vicarage

The vicarage is adjacent to St Peter’s in The Precincts.

It is a modern four-bedroom, two bathroom detached house, with a large study suitable for small meetings, two large reception rooms, a spacious kitchen / diner and a cloakroom.

The house is centrally heated throughout with an open fireplace in one of the downstairs reception rooms. The house is set in a substantial, mainly secluded garden in a quiet cul-de-sac very close to the centre of the village.



## Burnham Village

Burnham village, a mix of urban and rural areas, is in the extreme south of Buckinghamshire between Slough and Maidenhead. With excellent transport links, it is within easy reach of the M4, M40 and M25 motorways, the A4 Bath Road and the A40 Oxford Road. Burnham railway station has direct trains to London and the West Country and is part of the new Elizabeth Line giving quick, direct access to central London. Heathrow airport is a mere twenty-minute drive away.

The parish of St Peter is situated in the centre of the civil parish of Burnham which has approaching 13,000 residents. Much of the housing in the locality is owner-occupied although there are several pockets of social housing in the parish. Whilst Burnham is generally regarded as affluent there are areas of deprivation, and we hope that our new priest will help us to further develop a response to the needs and opportunities in these areas.

St Peter's parish spreads into part of Slough Trading Estate which is a major local employer. Burnham is sometimes considered to be a dormitory village because of its position and transport links. However, it does contain several light industrial units. Burnham High Street, 50 metres from St Peter's, has an attractive mix of modern, 16<sup>th</sup> and 17<sup>th</sup> century buildings housing both retail and service companies.

Burnham is blessed with many charitable and help groups catering for the young to the elderly; these include Scout and Guide groups and a youth club in addition to the St Peter's Girls' Brigade, Townswomen's Guild and Men's Sheds.

There are many sports and social groups in Burnham giving ample opportunity for people of all ages to involve themselves with the community. Whilst we are a large village, we are a close and caring community.

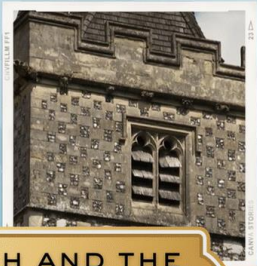
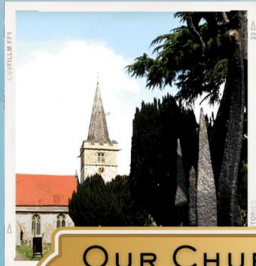
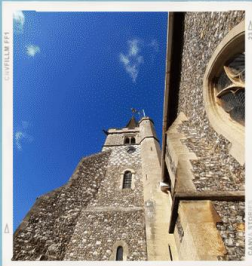
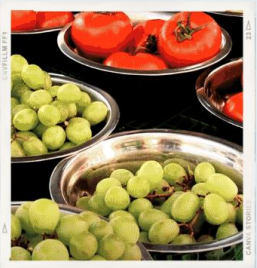
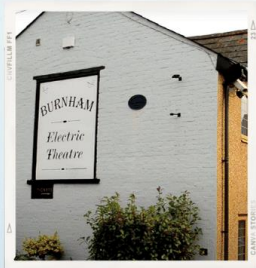
One of the major village events of the year is Remembrance Day. This commences with a procession through the village to the War Memorial for wreath laying. Our incumbent leads the service which is well attended by various uniformed groups, councillors and members of the local community.

A major feature of the area is Burnham Beeches, which is 374 hectares of ancient woodland, designated a site of special scientific interest. Frequently used for filming, 'The Beeches' featured in the films 'Dark Knight', 'Robin Hood, Prince of Thieves' and many more.

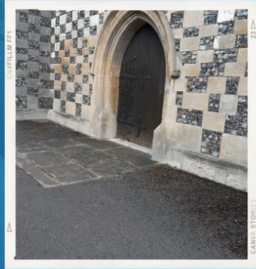
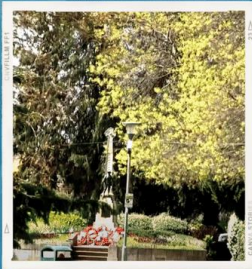
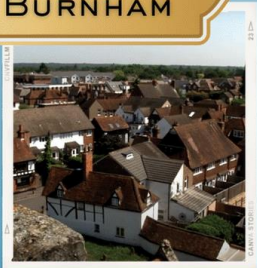
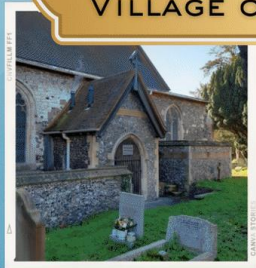
Education is well catered for in Burnham with three primary schools and a grammar school within the parish but there is no non-selective secondary school.



Parish Profile – St Peter's Church, Burnham



OUR CHURCH AND THE VILLAGE OF BURNHAM





The Diocese of Oxford serves the mission of the Church in Buckinghamshire, Berkshire and Oxfordshire. The diocese comprises more than 600 parishes, with over 800 churches, serving a diverse population of more than 2 million people located in all types of settings.

Our Diocesan Bishop is Rt. Revd. Dr. Steven Croft. Due to the size and complexity of the diocese, we have three Area Bishops who exercise considerable strategic & pastoral oversight for their Archdeaconries. The Bishop of Buckingham is currently vacant following the death of the Rt Rev’d Alan Wilson.

## **A more Christ-like Church**

### **Contemplative, compassionate and courageous for the sake of God's world**

Our world is changing in unprecedented ways; we must think afresh about inequality, our communities and human identity. We need to be the best Church we can be in this time: a more Christ-like Church for the sake of God’s world.

We are not the society for the preservation of old buildings (important though our heritage assets are); a church is the community of God’s people, not the building. We believe that becoming more Christ-like is about who we are called to be, not what we are called to do.

This is our common vision for every Christian in every church and school across this diocese. We want to discern what God is doing in our communities and figure out how best we can join in.

The call to become more Christ-like is not the work we need to do before a new corporate strategy and a five-year plan. It is the response we are called to make. We are continually adapting and reshaping our common vision as, together, we discern God’s will.

**And we are just beginning...**

### **The background to the common vision process**

Our common vision process is:

#### **Emergent**

We are continually adapting and reshaping our common vision as, together, we discern God’s will.

#### **Locally shaped**

We seek to continually recognise where the energy is at a local level and to discern where the Spirit is leading. We do not believe that our common vision can embrace every part of our common life: we want to celebrate and bless and work well in a



range of other areas of ongoing work and excellence while developing new priorities in a creative and sustainable way.

**Messy, untidy and iterative**

... but very energising!

## **We are called to respond**

The climate emergency is one of the most pressing issues of our age. We also see a deepening mental health crisis among our young people, growing inequality across society and, in this diocese, a huge influx of new buildings and new communities.

We know that there is a hunger in our communities for purpose and love. Some of the key facts are challenging, but we have substantial resources that we can draw on and a willingness to act.

We have listened with God to the big questions, the challenges and opportunities we have as a diocese and are responding in specific focus areas. You can find out more about the work of each focus area below:

- [Addressing poverty and inequality](#)
- [Christian formation and discipleship](#)
- [Environmental action](#)
- [Growing new congregations](#)
- [Schools, children and young people](#)

---

*"The only person in the life of the Church who is able to call the Church to mission is Christ. It is when the local church hears the call of Christ that we will let down the nets."*

*"That is why the process of renewal begins and continues and ends in encountering God in Jesus Christ and setting Christ again at the centre of our common life."*

*The Rt Revd Dr Steven Croft  
Bishop of Oxford*

---

## Deanery of Burnham and Slough

Since the implementation of synodical government, the deanery has developed a strong sense of team working. Church tradition across the deanery is diverse and, like other deaneries of a similar size, we are enriched by the variety of worship that takes place daily and weekly within our thirty places of worship across a mixture of rural, semi-rural and urban parishes.

The Burnham & Slough deanery recognises the importance of outreach to the wider community and many of our parishes are actively engaged in mission activity that brings them into regular contact with the people of God in the wider community.

Being part of a diverse community has given rise to some important inter-faith work, alongside some important community development work resulting from engagement with the Local Strategic Partnerships in Slough and South Bucks.

Like all deaneries, we respond to the changes that the National Church is facing at this time. Our recent deanery re-organisation has brought us into four groupings of churches - three formal group ministries and one informal group of churches working together in the East of the deanery.

Our ministerial resources serve to lead these groups in their ministry and mission activity. This structure requires flexibility and for people to work much more collaboratively together. Needless to say, anyone new to the deanery would be expected to work within this new structure and be part of this way of working.

The area covered by the deanery has a very diverse population. It has places of affluence as well as having wards that are some of the most deprived in the country.

The table shows the current parishes within the deanery:

Groups / Parishes			
Eastern	Northern	Jubilee	Southern
<b>Iver Heath</b> St Margaret	<b>Farnham Royal with Hedgerley</b> St John, Farn. Comm. St Mary, Farn. Royal, St Mary, Hedgerley	<b>Burnham</b> St Peter	<b>Colnbrook Horton and Wraybury</b> St Thomas Colnbrook, St Michael Horton St Andrew Wraybury
<b>Iver and Richings Park</b> St Peter & St Leonard	<b>Upton-cum-Chalvey</b> St Mary, Slough St Laurence, Upton St Peter, Chalvey	<b>Hitcham</b> St Mary	<b>Datchet, Eton, Eton Wick, Boveney &amp; Dorney</b> St John the Evangelist, Eton St John the Baptist, Eton Wick St James the Less, Dorney St Mary Magdalene, Boveney St Mary, Datchet
<b>Wexham</b> St Mary	<b>Slough</b> St Paul	<b>Taplow with Dropmore</b> St Nicolas & St Anne	
<b>Langley Team Ministry</b> St Mary, Christ the Worker, St Francis	<b>Stoke Poges</b> St Giles & St Andrew’s Church Centre	<b>Cippenham</b> St Andrew	
	<b>Manor Park</b> St John and St Michael		
	<b>Britwell</b> St George		

## Churches Together in Burnham and Taplow

This is a local ecumenical group which meets regularly to further God’s Kingdom in Burnham and the surrounding area.

Current members include:

- St Peter's Burnham
- St Mary's Hitcham
- St Anne’s Dropmore
- Burnham Methodist Church
- Our Lady Of Peace Burnham
- United Reformed Church Burnham
- St Nicolas Taplow
- St John the Evangelist, Eton
- St John the Baptist, Eton Wick
- St James the Less, Dorney
- St Mary Magdalene, Boveny

Joint events have included Carols in the High Street, Week of Prayer for Christian Unity, the World day of Prayer and the Community Picnic.

## Appendices

### Services

Day	Time	Service type	Description	Attendance
<b>Sun</b>	08:00	Holy Communion	A quiet, said service, using the Book of Common Prayer	12
	10:00	Parish Communion	Our main Sunday service with choir and organ, followed by refreshments and fellowship in Cornerstone	60
	10:00 2 <sup>nd</sup> Sunday of the month	WoW	An informal lively service aimed at the younger members of our community	45-55
<b>Mon</b>	10:15 2 <sup>nd</sup> Monday of every month	Communion Café	Our monthly service including the Eucharist, conducted by Revd. Sue Smith, held in Cornerstone and provided for the older members of our congregation to share their faith and fellowship in a relaxed setting	25
<b>Tue</b>	09:00	Morning Prayer	A traditional morning prayer service	3

## Parish Profile – St Peter’s Church, Burnham

Day	Time	Service type	Description	Attendance
	17:00	Evening Prayer	A traditional evening prayer service	3
<b>Wed</b>	09.30	Midweek Communion	A spoken service of Holy Communion followed by Welcome Wednesday in Cornerstone	12-15
<b>Thur</b>	09.00	Morning Prayer	A traditional morning prayer service	3
	17:30	Evening Prayer	A traditional evening prayer service	3
<b>Fri</b>	09.00	Morning Prayer	A traditional morning prayer service	4
	17:30	Evening Prayer	A traditional evening prayer service	4

## Person specification

### Qualifications/Training

#### Essential

- Ordained priest within the Church of England, or a Church in communion with it, or a Church whose orders it recognises.
- Have satisfactorily completed Initial Ministerial Education.
- Previous experience of holding an incumbency
- Willingness to engage in further training as required.

#### Desirable

- Have completed a recognised course of study on nurturing those new to faith.

### Experience

#### Essential

- A liturgical tradition that is liberal catholic.
- Engagement with and pastoral support for people of all ages and from all types of situation.
- Priestly ministry involving vision setting, team development, delegation and collaborative working.
- Responsibility in a complex organisation with substantial resources to manage.
- Experienced in nurturing those new to the faith and supporting growth in church membership.



- Active engagement with local schools, especially our local church school.
- Experience of engaging in worship of both traditional and creative forms by engaging and imaginative ways.

## Knowledge, Skills and Competencies

### Essential

- Ability to preach in a variety of styles and formats to a broad range of listeners with varying outlooks, ages and understanding.
- Ability to identify and respond to opportunities for mission and outreach.
- Ability to make and build on links with individuals and connect with community organisations which use our building and facilities.
- The ability to motivate, inspire and develop lay ministry, volunteering and working collegiately with those around them.

### Desirable

- Experience in building Bible study and prayer groups in traditional and creative ways.
- Working in or with deprived or vulnerable parishioners/parish areas.

## General Attributes

### Essential

- A love of fellowship and sharing as a vehicle for showing God's love to others.
- A sense of humour and fun accompanied by a friendly and approachable leadership style.
- Able to work in sympathy with the Eucharistic tradition of the benefice.
- A thoughtful and ecumenical outlook and willingness to work with local churches and faith groups.

### Desirable

- Evidence of a deep prayer life.
- The ability to draw on a wide range of spiritual resources to build prayerfulness, contemplation and promote both individual and collective spiritual growth.
- An appreciation of music and church choral music with an understanding of how they can draw people to God.

## Other

- Flexibility with a willingness to listen to new ideas and explore options and future possibilities.
- A commitment to work within the parish policy framework and especially the Safeguarding and Information Security Policies.

## Role description

### 1. Details of the post

<b>Role title:</b>	Vicar
<b>Type of Role:</b>	Full time stipendiary
<b>Name of benefice:</b>	Parish of St Peter’s Burnham
<b>Episcopal area:</b>	Oxford
<b>Deanery:</b>	Burnham & Slough
<b>Archdeaconry:</b>	Buckingham
<b>Conditions of Service:</b>	Please refer to Statements of Particulars document issued in conjunction with this role description.
<b>Key contact for Clergy Terms of Service:</b>	Archdeacon of Buckingham This role falls within the Clergy Terms of Service formally known as Common Tenure. The Archdeacon of Buckingham is the designated person by the Bishop of Oxford to issue the Statement of Particulars for the post holder.
<b>Accountability:</b>	Priests share with the Bishop in the oversight of the Church. As an office holder, you are expected to lead and prioritise work in line with the purpose of the role, you are encouraged to inform the Archdeacon and Churchwardens about any issues exceptional or otherwise that have the potential to affect ongoing delivery of ministry.

### 2. Context

#### Wider Context

Under the leadership of the Bishop of Oxford, the Rt Revd Dr Steven Croft, a common vision is in place for the Diocese of Oxford.

The vision addresses what kind of church we are called to be – ‘A Christ-like Church’.

## What are the marks of a Christ-like Church?

To be the Church of the Beatitudes:

- Contemplative
- Compassionate
- Courageous

### Strategic priorities:

- Make a difference in the world.
- Support and grow the local church.
- Establish new churches and congregations.
- Serve our schools.
- Renew discipleship and ministry.

## Local Context

St Peter’s Burnham is seen as “a church with heart at the heart of the community.” It is a single benefice church located centrally within the village of Burnham, Bucks. Its many existing links and relationships to the community can be further developed and built upon to build Christ’s kingdom.

Our aspirational shared vision that we are seeking to work towards is:

“To reach further into the Burnham community, sharing God’s love by discipleship and witness. Growing spiritually and nurturing our faith by worship, study, prayer and fellowship together.”

## 3. Purpose and key responsibilities

### General

- A. To exercise the cure of souls shared with the bishop in this benefice in collaboration with colleagues, including the praying of the Daily Office, the administration of the sacraments and preaching.
- B. To have regard to the calling and responsibilities of the clergy (as described in the Canons, the Ordinal, the Code of Professional Conduct for the Clergy) and other relevant legislation including:
  - Bringing the grace and truth of Christ to this generation and making him known to those in your care.
  - Instructing the parishioners in the Christian faith.
  - Preparing candidates for baptism and confirmation.
  - Preparing couples for their wedding.



- Diligently visiting the parishioners of the benefice, particularly those who are sick and infirm.
  - Providing spiritual counsel and advice.
  - Consulting with the Parochial Church Council on matters of general concern and importance to the benefice.
  - Bringing the needs of the world before God in intercession.
  - Calling your hearers to repentance and declaring in Christ's name the absolution and forgiveness of their sins.
  - Blessing people in God’s name.
  - Preparing people for their death.
  - Discerning and fostering the gifts of all God’s people.
  - Being faithful in prayer, expectant and watchful for the signs of God’s presence, as he reveals his kingdom among us.
- C. To share in the wider work of the deanery and diocese as appropriate, for the building up of the whole Body of Christ.

## Local

### A. Mission and Outreach

- Support church members to improve lay leadership and encourage volunteering, enabling the increase of mission outreach and making a difference to our local community, particularly to those who are deprived or vulnerable.
- Maintain the existing relationship with St Peter’s School<sup>7</sup> and other local schools so God’s love and the Christian faith can be shared with more children and young people locally.

### B. Leadership and working collaboratively

- Work collaboratively in a flexible way with the existing lay leadership team.
- Build an open, enabling, and communicative relationship with the churchwardens, PCC members and group leaders and organisations which make use of resources and church activities.
- Support and engage with other ministers in the Jubilee River Group in providing support and assistance and facilitating mission across the deanery.
- Participating in the ‘Churches Together in Burnham and Taplow’ ecumenical initiative.

---

<sup>7</sup> Role includes being a school governor.

### **C. Worship and preaching**

- Promote and enable inclusivity for all generations to participate and contribute in different styles of worship at St Peter’s.
- Be willing to celebrate the ‘Prayers of Love and Faith’ liturgy.

### **D. Pastoral Care**

- Establish nurturing pathways to ensure that those new to the Christian faith or to St Peter’s are welcomed, supported and encouraged in their spiritual development and integrated into church fellowship.
- Lead a robust welcoming ministry where those coming to St Peter’s for the first time and exploring faith, feel welcomed, included, and have routes to explore and learn more about Christ’s love and the Christian faith.
- Organise the provision of a well-developed confirmation preparation and support programme to those wishing to become confirmed. Provide appropriate guidance and support both before and after their confirmation.
- Support the contribution of pastoral visiting and counselling, enabling more compassion and care from our church to those in the community, showing God’s love in times of need.

### **E. Stewardship and benefice organisation**

- Guide the church family in regularly giving towards God’s work and church upkeep, particularly via the Parish Giving Scheme.
- Support and work in partnership with PCC colleagues and the stewardship officer regarding giving and the stewardship/use of finances.

### **F. Personal development and spirituality**

- Initiate and establish study and prayer groups to improve our collective contemplation by studying God’s word, spending time in prayer and meditation, so we grow spiritually both individually and as a fellowship.
- Encourage more church members with God’s help, to identify and use their gifts and talents to enable St Peter’s to engage in our Mission Action Plan.
- Support individuals who feel they have a calling to become a priest.

### **Other responsibilities**

- Participate in the Bishop’s Ministerial Development Review scheme and engage in Continuing Ministerial Development.
- Carry out any other duties and responsibilities as required in line with the benefice needs.
- Engage with and ensure compliance with safeguarding policies and training required for the benefice.

## 4. Benefice summary

<b>Benefice:</b>	Parish of St Peter’s Burnham
<b>Patron:</b>	Eton College
<b>PCC Members:</b>	13 members Peter Lewis (Lay Chair and Churchwarden), Jackie Loveday (Secretary), Chris Knight (Treasurer), Sheila Warburton, Emma Warburton, Fiona Burridge, Ian Fordyce, John Carey, Robert Dunster, Steve Dobson (Churchwarden), Michaela Cottrell, Hannah Lewis and Victoria Samson
<b>Churchwardens:</b>	Peter Lewis and Steve Dobson
<b>Ministers:</b>	Permission to Officiate, Revd Sue Smith Licensed Lay Minister, Ian Fordyce
<b>Licensed preachers:</b>	Jenny Dobson
<b>Benefice paid staff:</b>	Pam Rogers - Parish Administrator Dawn Woods - part time cleaner
<b>Benefice unpaid staff / volunteers:</b>	20
<b>Buildings:</b>	Church, Cornerstone building and Vicarage
<b>Churchyards:</b>	2 churchyards - one sited around the church, the other being annexed to the North West.
<b>Pastoral Reorganisation proposals:</b>	None planned

For more detailed information please refer to the parish profile above.

## 5. Key contacts

### Groups & committees

- Deanery Chapter
- Deanery Synod
- Deanery Pastoral Committee
- Eton College
- Jubilee River Group
- Churches Together in Burnham & Taplow

## In the benefice

- Churchwardens
- Office administrator
- The PCC members
- Ministerial Colleagues in the lay leadership team
- Group leaders
- Head teacher of St Peter’s School - Ms Tanya Morris

## Support structures

- Area Dean
- Area Bishop
- Archdeacon

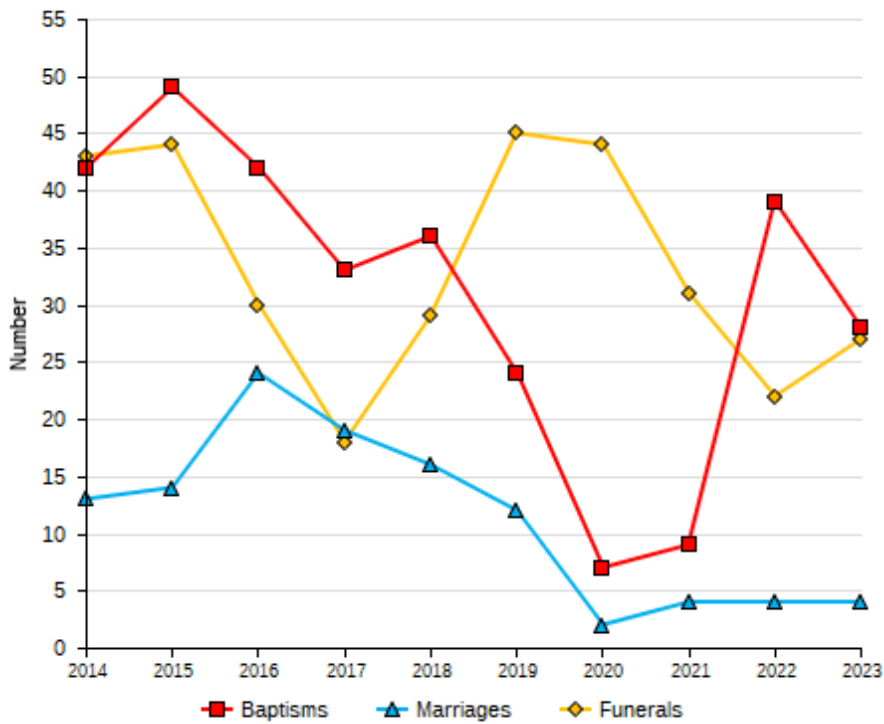
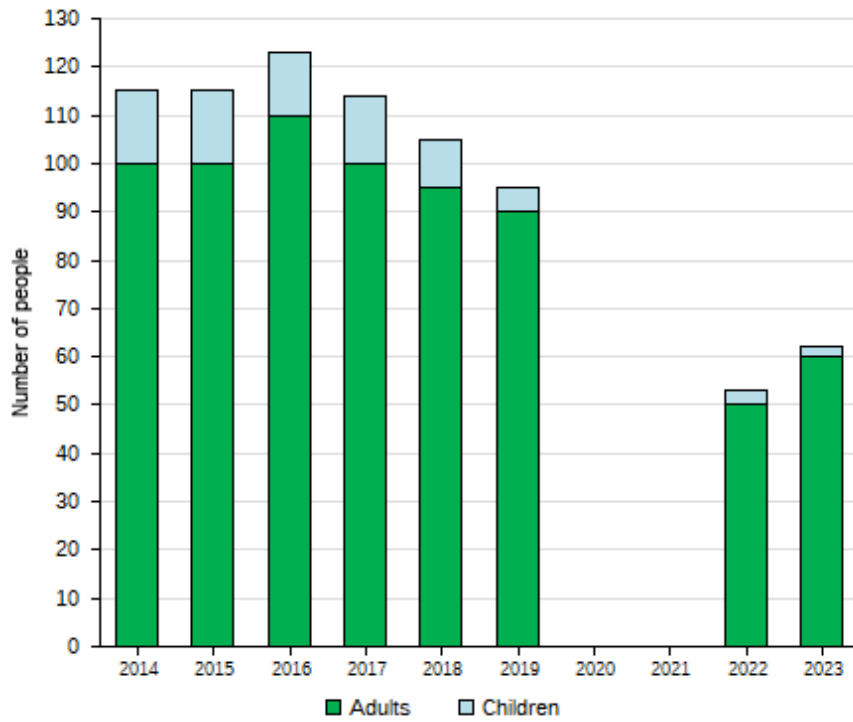
## 6. Other

This role description is issued alongside and should be read in conjunction with the following documents:

- The Ordinal
- The Canons of the Church of England
- Guidance for the Professional Conduct of Clergy
- Bishop’s Licence
- Statement of Particulars issued to the office holder on successful appointment.
- Diocesan Clergy Handbook
- Parish Profile
- Ministry Action Plans (MAPs)
- Any objectives discussed and agreed between the post holder and the supervising minister.

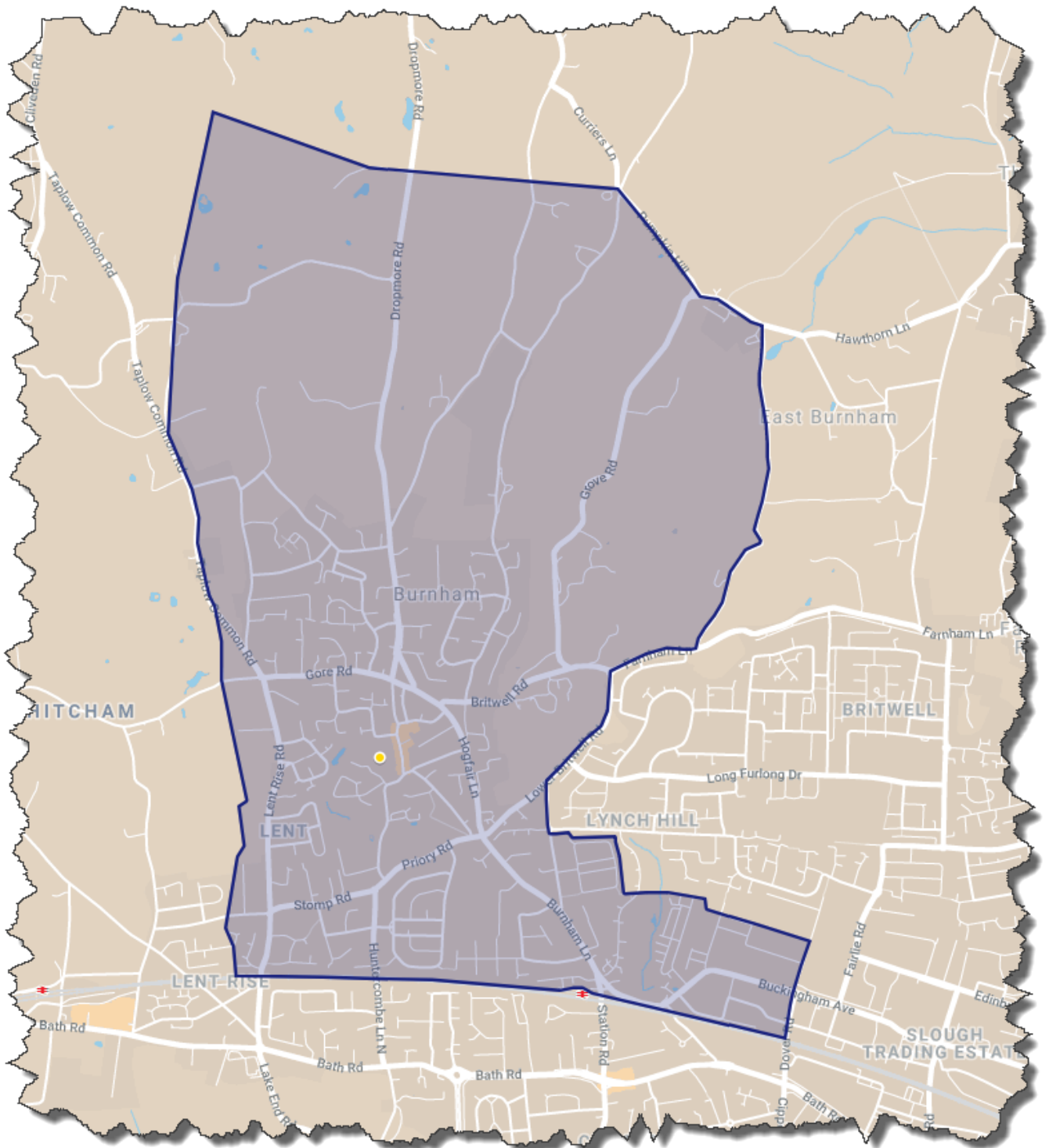


## Church statistics<sup>8</sup>



<sup>8</sup> Based on The Church of England statistics for mission returns, No figures are available for 2013

## Map of The Ecclesiastical Parish of St Peter



Please click on the map to view the parish boundaries online via Google maps.

## Finances

### Financial Statements for the year ended 2023 Receipts and Payments Accounts

	Note	Unrestricted Funds		Restricted Funds	Endowment Funds	TOTAL 2023	TOTAL 2022
		General £	Designated £	£	£	£	£
<b>RECEIPTS</b>							
<b>Voluntary Receipts</b>							
Planned Giving		41,205				41,205	43,653
Collections at Services		9,205				9,205	6,973
All other giving/voluntary receipts	5a	4,324		5,969		10,293	17,722
Gift Aid Tax Recovered		11,293		1,095		12,388	11,745
		<b>66,027</b>	<b>0</b>	<b>7,064</b>	<b>0</b>	<b>73,091</b>	<b>80,093</b>
<b>Activities for Generating Funds</b>	5b	16,902				16,902	14,801
<b>Investment Income</b>	5c	127			27,371	27,498	26,575
<b>Church activities</b>	5d	5,601	1,539			7,140	11,105
<b>Sub Total</b>		<b>88,657</b>	<b>1,539</b>	<b>7,064</b>	<b>27,371</b>	<b>124,631</b>	<b>132,574</b>
<b>Church Groups (own bank account)</b>	4	0	620			620	320
<b>Total Receipts</b>		<b>88,657</b>	<b>2,159</b>	<b>7,064</b>	<b>27,371</b>	<b>125,251</b>	<b>132,894</b>
<b>PAYMENTS</b>							
<b>Church activities:</b>							
Parish Share		68,478				68,478	75,418
Clergy & Staffing Costs		16,863			3,146	20,009	19,982
Church Running Expenses	5e	4,104		625	31,343	36,072	37,810
Fundraising Costs		2,939				2,939	3,010
Mission Giving & Donations	5f	210	592	5,871		6,673	6,551
		<b>92,594</b>	<b>592</b>	<b>6,496</b>	<b>34,489</b>	<b>134,171</b>	<b>142,771</b>
<b>Church Groups (own bank account)</b>	4		225			225	760
<b>Total Payments</b>		<b>92,594</b>	<b>817</b>	<b>6,496</b>	<b>34,489</b>	<b>134,396</b>	<b>143,531</b>
<b>Excess of receipts over payments</b>		<b>(3,937)</b>	<b>1,342</b>	<b>568</b>	<b>(7,118)</b>	<b>(9,145)</b>	<b>(10,637)</b>
<b>Transfers between funds</b>		947	(947)			0	0
		<b>(2,990)</b>	<b>395</b>	<b>568</b>	<b>(7,118)</b>	<b>(9,145)</b>	<b>(10,637)</b>
Cash at bank & in hand at 1st January		<b>(9,388)</b>	<b>1,526</b>	<b>4,544</b>	<b>91,506</b>	<b>88,188</b>	<b>98,825</b>
Cash at bank & in hand at 31 December		<b>(12,378)</b>	<b>1,921</b>	<b>5,112</b>	<b>84,388</b>	<b>79,043</b>	<b>88,188</b>

Parish Profile – St Peter’s Church, Burnham

**STATEMENT OF FINANCIAL ASSETS**

Cash at bank and in hand at 31st December	<b>2023</b>	<b>2022</b>
Barclays Current Account 1	1,351	8,685
Barclays Current Account 2	500	980
Natwest Current Account	3,879	4,705
Natwest Business Reserve	1,551	1,582
CBF Deposit Fund	70,345	74,171
<b>Sub Total - bank accounts</b>	<b>77,626</b>	<b>90,123</b>
Cash in hand	0	0
Uncleared cheques	0	(3,470)
<b>Sub Total</b>	<b>77,626</b>	<b>86,653</b>
Church Groups (own bank account)	1,671	1,476
Other Monetary Assets	257	59
Other Monetary Liabilities	(511)	0
<b>TOTAL CASH AT BANK/IN HAND</b>	<b>79,043</b>	<b>88,188</b>

The full Annual and Financial reports for the year ended 2023 can be viewed at:  
[Annual Review and Financial Report | St Peters Church \(stpetersburnham.org\)](https://www.stpetersburnham.org/Annual-Review-and-Financial-Report)